

# RNAV (GPS) RWY 7

PENDLETON/ EASTERN OREGON RGNL AT PENDLETON (P'DT)

WAAS CH <b>73012</b> <b>W07A</b>	APP CRS <b>074°</b>	Rwy Idg TDZE <b>1486</b> Apt Elev <b>1497</b>
--	------------------------	---

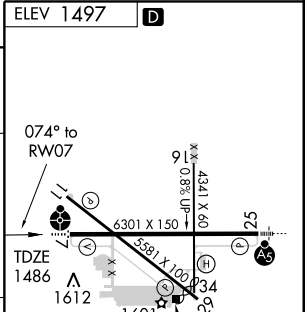
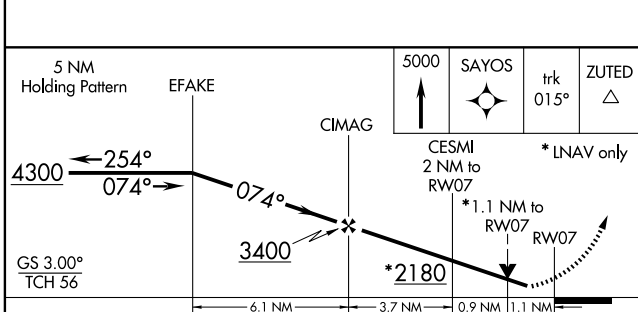
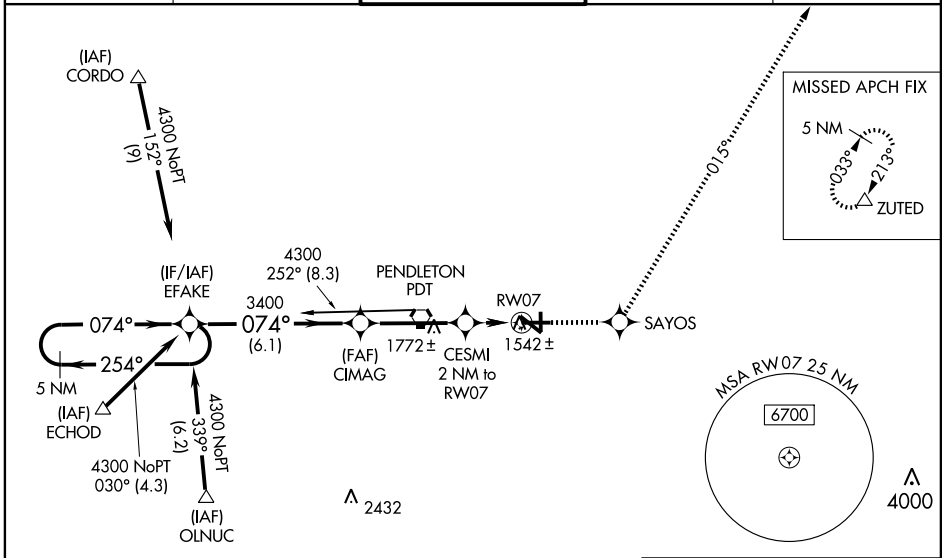
**⚠** Inoperative table does not apply to LNAV/VNAV all Cats.  
**⚠** For uncompensated Baro-VNAV systems, LNAV/VNAV NA below -17°C (2°F) or above 46°C (114°F). DME/DME RNP-0.3 NA. Visibility reduction by helicopters NA. VDP and Baro-VNAV NA when using Walla Walla altimeter setting. When local altimeter setting not received, use Walla Walla altimeter setting and increase all DA/MDA 120 feet, and all visibilities ¼ mile. Inoperative table does not apply.

ODALS



MISSED APPROACH: Climb to 5000 direct SAYOS and via track 015° to ZUTED and hold.

ASOS <b>118.325</b>	CHINOOK APP CON* <b>133.15 379.15</b>	PENDLETON TOWER* <b>119.7 (CTAF) 257.8</b>	GND CON <b>121.9 257.8</b>	UNICOM <b>122.95</b>
------------------------	--	---	-------------------------------	-------------------------



CATEGORY	A	B	C	D
LPV DA		1736-¾	250 (300-¾)	
LNAV/VNAV DA		1834-1¼	348 (400-1¼)	
LNAV MDA		1880-¾	394 (400-¾)	1880-1¼ 394 (400-1¼)
CIRCLING	1920-1 423 (500-1)	1960-1 463 (500-1)	1960-1½ 463 (500-1½)	2060-2 563 (600-2)

REIL Rwy 11 and 29  
 MIRL Rwy 11-29  
 HIRL Rwy 7-25

NW-1, 19 NOV 2009 to 17 DEC 2009

NW-1, 19 NOV 2009 to 17 DEC 2009

# RNAV (GPS) RWY 7