


VOR RWY 7

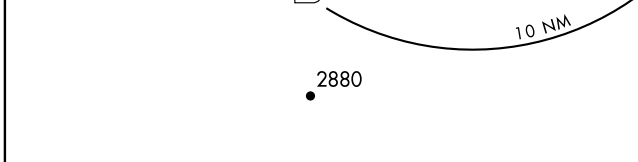
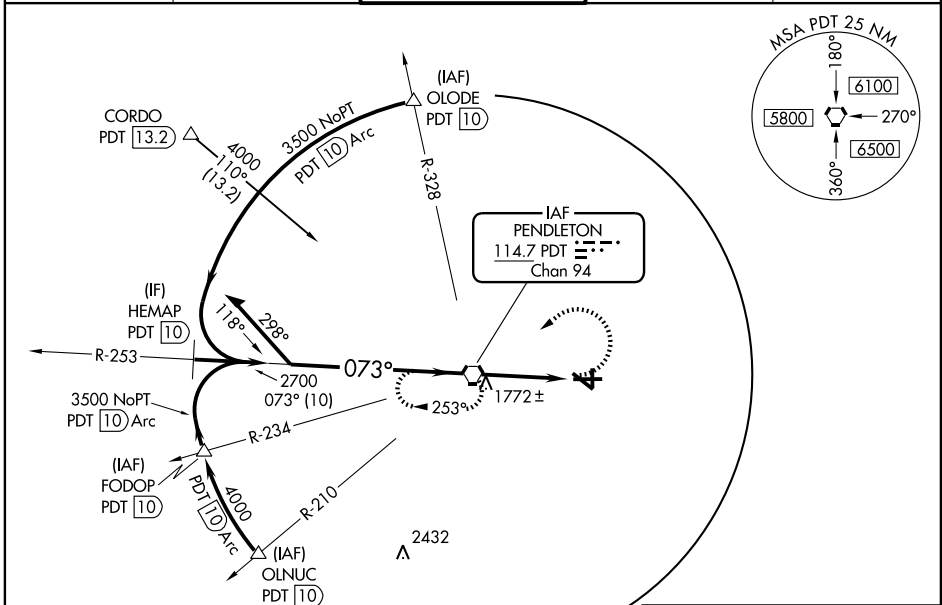
PENDLETON/ EASTERN OREGON RGNL AT PENDLETON (P'DT)

VORTAC PDT 114.7 Chan 94	APP CRS 073°	Rwy Idg 6301 TDZE 1486 Apt Elev 1497
--	------------------------	---

▼ Inoperative table does not apply to S-7 Cat C.
▲ Visibility reduction by helicopters NA.
 When local altimeter setting not received, use Walla Walla altimeter setting and increase all MDA 120 feet, and all visibilities ½ mile.
 Inoperative table does not apply when using Walla Walla altimeter setting.
 VDP NA when using Walla Walla altimeter setting.

ODALS

MISSED APPROACH: Climbing left turn to 4000 direct PDT VORTAC and hold, continue climb-in-hold to 4000.

ASOS 118.325	CHINOOK APP CON * 133.15 379.15	PENDLETON TOWER * 119.7 (CTAF) 257.8	GND CON 121.9 257.8	UNICOM 122.95
------------------------	---	--	-------------------------------	-------------------------



ELEV 1497 **D**

073° 3.6 NM from FAF

6301 X 150
 3561 X 100
 TDZE 1486
 1612
 1601
 1559

REIL Rwy 11 and 29
 MIRL Rwy 11-29
 HIRL Rwy 7-25

FAF to MAP 3.6 NM

Knots	60	90	120	150	180
Min:Sec	3:36	2:24	1:48	1:26	1:12

CATEGORY	A	B	C	D
S-7	2040-¾	554 (600-¾)	2040-1½ 554 (600-1½)	2040-1¾ 554 (600-1¾)
CIRCLING	2040-1	543 (600-1)	2040-1½ 543 (600-1½)	2060-2 563 (600-2)

VOR RWY 7

NW-1, 11 MAR 2010 to 08 APR 2010

NW-1, 11 MAR 2010 to 08 APR 2010