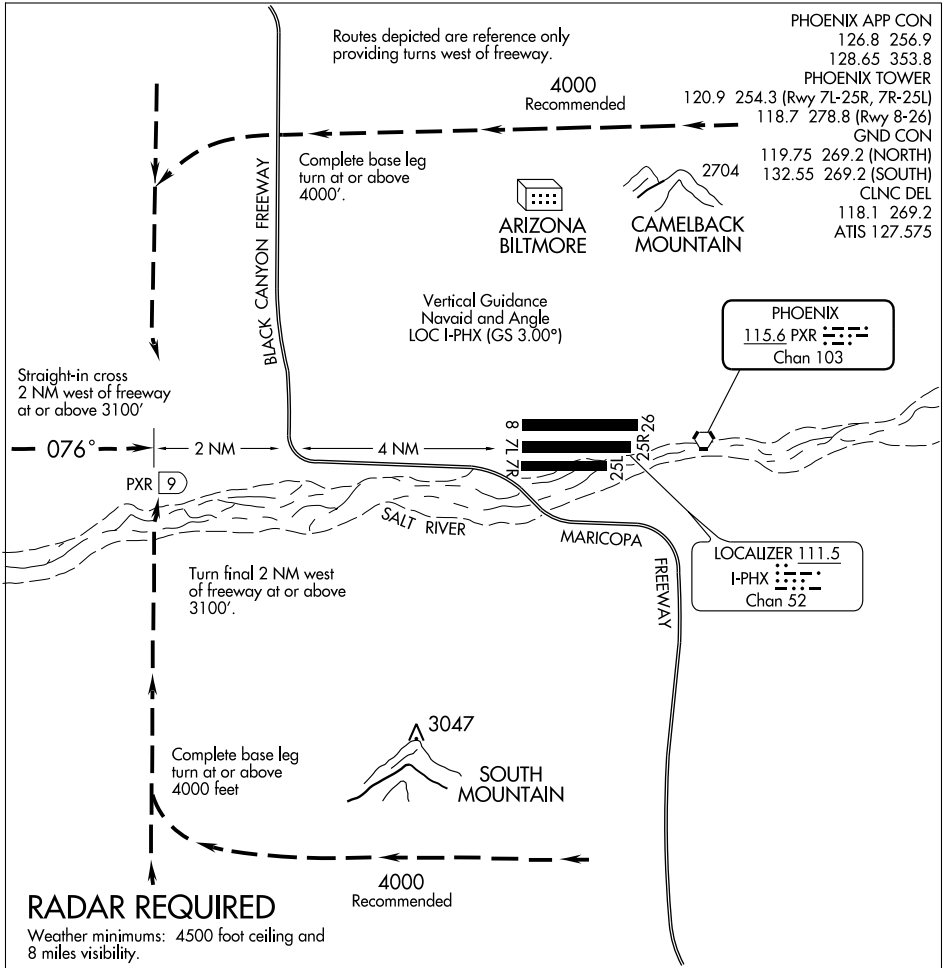


# FREEWAY VISUAL RWY 7L

AL-322 (FAA)

PHOENIX SKY HARBOR INTL (PHX)  
PHOENIX, ARIZONA



SW-4, 19 NOV 2009 to 17 DEC 2009

SW-4, 19 NOV 2009 to 17 DEC 2009

1	2	3	4	5	6	7	8	9	10	11	12	13	14	15	16
---	---	---	---	---	---	---	---	---	----	----	----	----	----	----	----

## FREEWAY VISUAL RWY 7L

When visual approaches to Runway 7L are in progress, clearances will be given utilizing in part the following phraseology:

"(IDENT) CLEARED FOR A FREEWAY VISUAL RUNWAY 7L APPROACH."

# FREEWAY VISUAL RWY 7L

33°26'N-112°01'W

PHOENIX, ARIZONA  
PHOENIX SKY HARBOR INTL (PHX)