

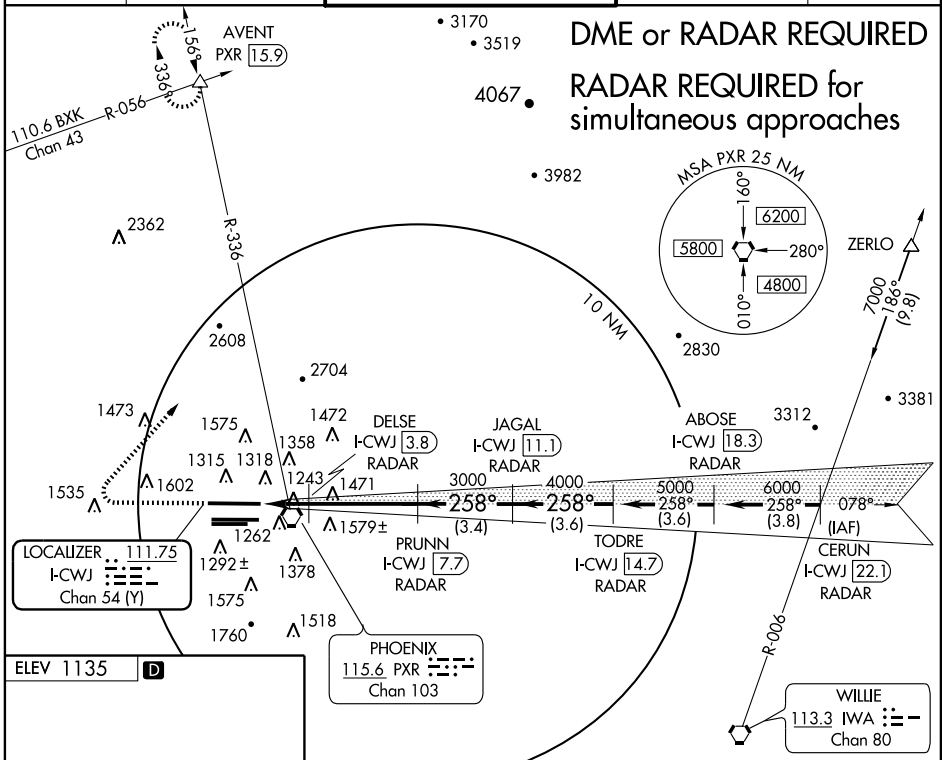
LOC/DME I-CWJ <b>111.75</b> Chan 54 (Y)	APP CRS <b>258°</b>	Rwy Idg TDZE Apt Elev	<b>11489</b> <b>1135</b> <b>1135</b>
---	------------------------	-----------------------------	--

# ILS or LOC RWY 26

PHOENIX SKY HARBOR INTL (PHX)

**▽** MISSED APPROACH: Climb to 2500, then climbing right turn to 5000 via heading 030° and PXR R-336 to AVENT INT/15.9 DME and hold.

ATIS <b>127.575</b>	PHOENIX APP CON <b>128.65 353.8</b>	PHOENIX TOWER <b>118.7 278.8</b> (Rwy 8-26) <b>120.9 254.3</b> (Rwy 7L-25R, 7R-25L)	GND CON <b>119.75 269.2</b> (N) <b>132.55 269.2</b> (S)	CLNC DEL <b>118.1 269.2</b>
------------------------	--	---	---	--------------------------------

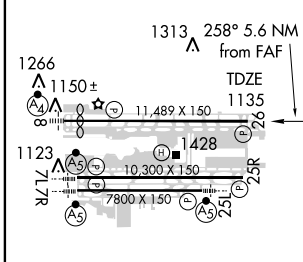


**DME or RADAR REQUIRED**  
**RADAR REQUIRED** for simultaneous approaches

SW-4, 19 NOV 2009 to 17 DEC 2009

SW-4, 19 NOV 2009 to 17 DEC 2009

ELEV 1135	<b>D</b>
-----------	----------



2500	5000	PXR R-336 115.6	AVENT △	VGSI and ILS glidepath not coincident.	
Use I-CWJ DME when on LOC course.		DELSE I-CWJ [3.8] RADAR	PRUNN I-CWJ [7.7] RADAR	JAGAL I-CWJ [11.1] RADAR	TODRE I-CWJ [14.7] RADAR
		1740	3000	258°	5000
		1.7 NM	3.9 NM	3.4 NM	3.6 NM

CATEGORY	A	B	C	D
S-ILS 26	1386- <sup>3</sup> / <sub>4</sub> 251 (300- <sup>3</sup> / <sub>4</sub> )			
S-LOC 26	1580-1	445 (500-1)	1580-1 <sup>1</sup> / <sub>4</sub> 445 (500-1 <sup>1</sup> / <sub>4</sub> )	1580-1 <sup>1</sup> / <sub>2</sub> 445 (500-1 <sup>1</sup> / <sub>2</sub> )
CIRCLING	1740-1	605 (700-1)	1740-1 <sup>3</sup> / <sub>4</sub> 605 (700-1 <sup>3</sup> / <sub>4</sub> )	1920-2 <sup>1</sup> / <sub>2</sub> 785 (800-2 <sup>1</sup> / <sub>2</sub> )

HIRL Rwy 8-26, 7L-25R and 7R-25L REIL Rwy 26					
FAF to MAP 5.6 NM					
Knots	60	90	120	150	180
Min:Sec	5:36	3:44	2:48	2:14	1:52