

ILS or LOC RWY 7L

PHOENIX SKY HARBOR INTL (PHX)

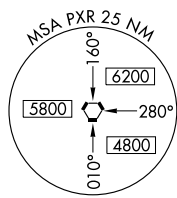
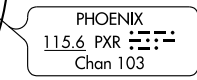
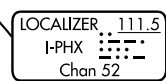
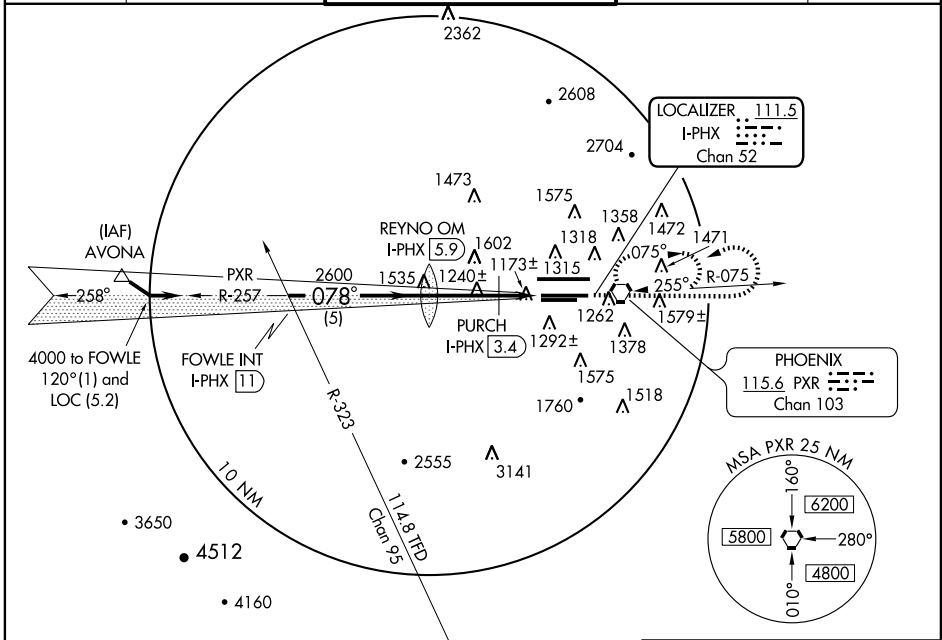
LOC/DME I-PHX 111.5 Chan 52	APP CRS 078°	Rwy Idg 10300 TDZE 1116 Apt Elev 1135
---	------------------------	--

▼ Inoperative table does not apply to S-ILS 7L.
▲ For inoperative MALSR, increase S-LOC 7L
 Cat A/B visibilities to RVR 5000.



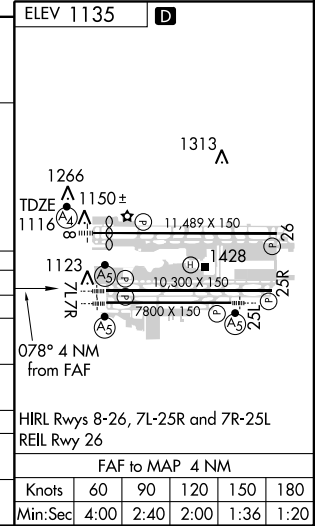
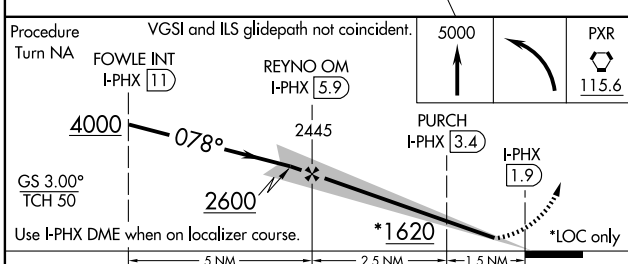
MISSED APPROACH: Climb to 5000 then left turn direct
 PXR VORTAC and hold.

ATIS 127.575	PHOENIX APP CON 128.65 353.8	PHOENIX TOWER 118.7 278.8 (Rwy 8-26) 120.9 254.3 (Rwy 7L-25R, 7R-25L)	GND CON 119.75 269.2 (N) 132.55 269.2 (S)	CLNC DEL 118.1 269.2
------------------------	--	---	---	--------------------------------



SW-4, 19 NOV 2009 to 17 DEC 2009

SW-4, 19 NOV 2009 to 17 DEC 2009



CATEGORY	A	B	C	D
S-ILS 7L	1321/40 205 (200-¾)			
S-LOC 7L	1620/40	504 (500-¾)	1620/50	504 (500-1)
CIRCLING	1740-1	605 (700-1)	1740-1¾ 605 (700-1¾)	1920-2½ 785 (800-2½)
PURCH DME MINIMUMS				
S-LOC 7L	1520/40 404 (400-¾)			
CIRCLING	1740-1	605 (700-1)	1740-1¾ 605 (700-1¾)	1920-2½ 785 (800-2½)