

ILS or LOC RWY 7R
PHOENIX SKY HARBOR INTL (PHX)

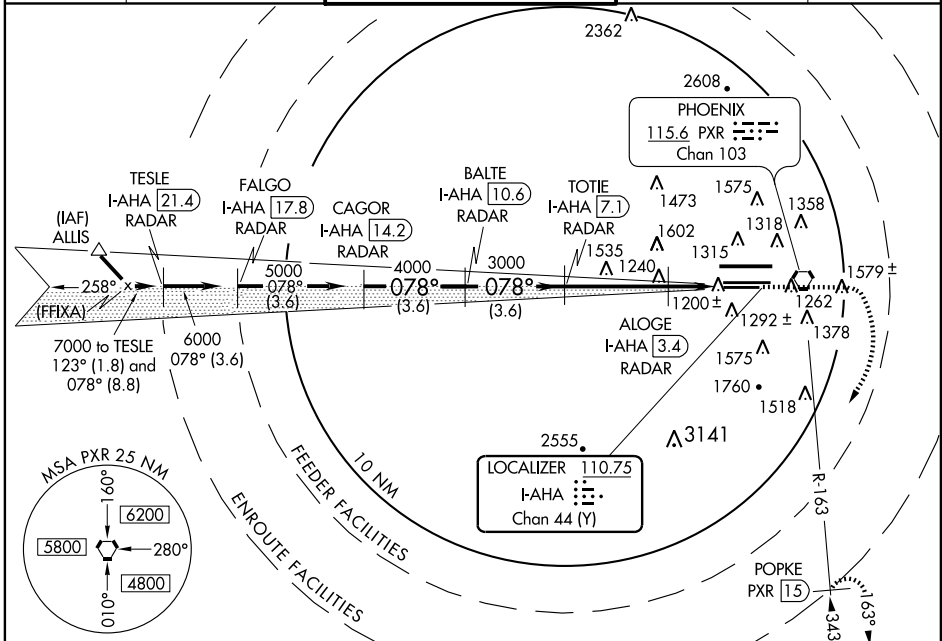
LOC/DME I-AHA 110.75 Chan 44 (Y)	APP CRS 078°	Rwy Idg 7800 TDZE 1116 Apt Elev 1135
---	------------------------	---

⚠ Inoperative table does not apply to S-ILS 7R.
For inoperative MALSR, increase S-LOC 7R Cat A/B visibility to 1 mile.
Visibility reduction by helicopters NA.



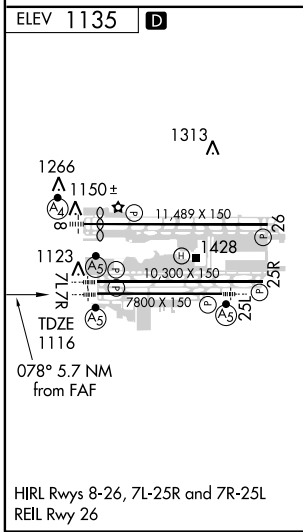
MISSED APPROACH: Climb to 3000 then climbing right turn to 5000 via heading 250° and PXR R-163 to POPKE/15 DME and hold.

ATIS 127.575	PHOENIX APP CON 128.65 353.8	PHOENIX TOWER 118.7 278.8 (Rwy 8-26) 120.9 254.3 (Rwy 7L-25R, 7R-25L)	GND CON 119.75 269.2 (N) 132.55 269.2 (S)	CLNC DEL 118.1 269.2
------------------------	--	---	---	--------------------------------



SW-4, 19 NOV 2009 to 17 DEC 2009

SW-4, 19 NOV 2009 to 17 DEC 2009



DME or RADAR REQUIRED
RADAR REQUIRED for simultaneous approaches.

Procedure Turn NA	CAGOR I-AHA 14.2 RADAR	BALTE I-AHA 10.6 RADAR	TOTIE I-AHA 7.1 RADAR	3000	5000	PXR R-163 115.6	POPKE PXR 15
	Use I-AHA DME when on LOC course.			5000 → 078°	3000	ALOGE I-AHA 3.4 RADAR	I-AHA 1.4
				3000	1800	GS 3.00° TCH 57	
				3.6 NM	3.6 NM	3.7 NM	2 NM
CATEGORY	A	B	C	D			
S-ILS 7R	1363-¾		247 (300-¾)				
S-LOC 7R	1520-¾		404 (400-¾)				
CIRCLING	1740-1 605 (700-1)		1740-1¾ 605 (700-1¾)		1920-2½ 785 (800-2½)		