

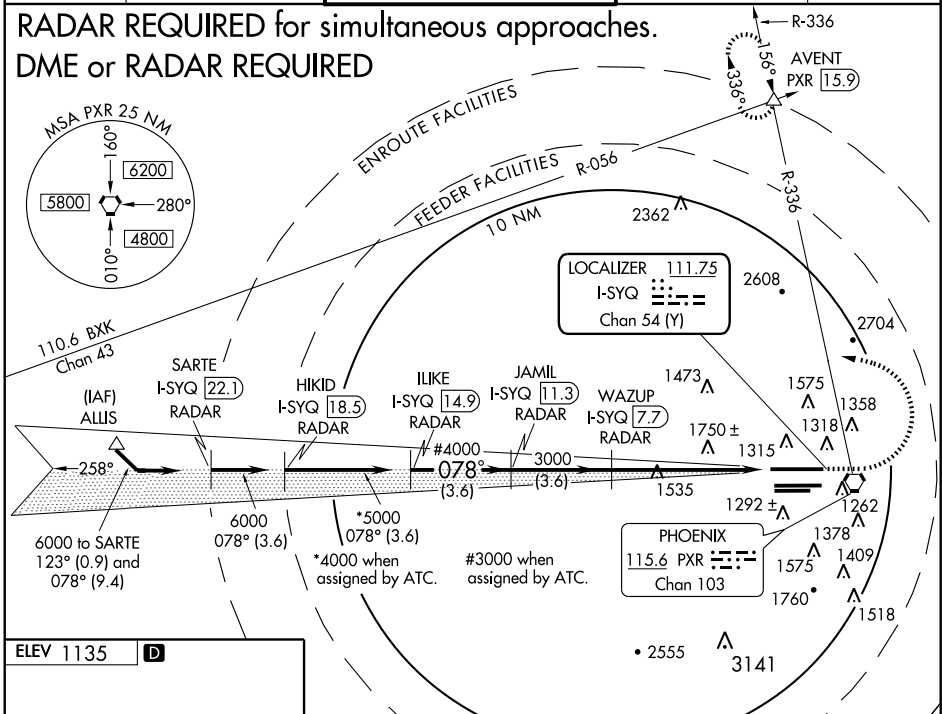
LOC/DME I-SYQ 111.75 Chan 54 (Y)	APP CRS 078°	Rwy ldg TDZE Apt Elev	10591 1118 1135
--	------------------------	-----------------------------	--

ILS or LOC RWY 8
PHOENIX SKY HARBOR INTL (PHX)

▽ ▲	MALSF 	MISSED APPROACH: Climb to 3000, then climbing left turn to 5000 via heading 280° and PXR R-336 to AVENT/INT 15.9 DME and hold.
----------------------	-----------	--

ATIS 127.575	PHOENIX APP CON 128.65 353.8	PHOENIX TOWER 118.7 278.8 (Rwy 8-26) 120.9 254.3 (Rwy 7L-25R, 7R-25L)	GND CON 119.75 269.2 (N) 132.55 269.2 (S)	CLNC DEL 118.1 269.2
------------------------	--	---	---	--------------------------------

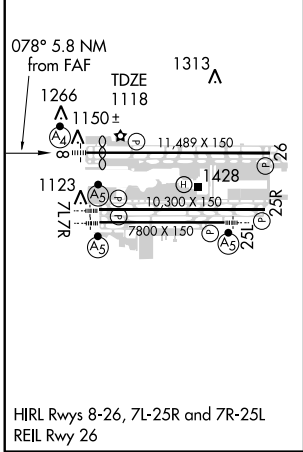
RADAR REQUIRED for simultaneous approaches.
DME or RADAR REQUIRED



SW-4, 19 NOV 2009 to 17 DEC 2009

SW-4, 19 NOV 2009 to 17 DEC 2009

ELEV 1135	D
-----------	----------



Procedure Turn NA

*4000 when assigned by ATC
#3000 when assigned by ATC

3000 ↑ HDG 280°

5000

PXR R-336 115.6

AVENT △

ILIKE I-SYQ 14.9 RADAR

JAMIL I-SYQ 11.3 RADAR

WAZUP I-SYQ 7.7 RADAR

Use I-SYQ DME when on LOC course

I-SYQ 1.9

GS 3.00° TCH 55

VGSI and ILS glidepath not coincident.

3.6 NM 3.6 NM 5.7 NM

CATEGORY	A	B	C	D
S-ILS 8	1368-1 250 (300-1)			
S-LOC 8	1860-1 742 (800-1)	1860-1¼ 742 (800-1¼)	1860-2¼ 742 (800-2¼)	1860-2½ 742 (800-2½)
CIRCLING	1860-1 725 (800-1)	1860-1¼ 725 (800-1¼)	1860-2¼ 725 (800-2¼)	1920-2½ 785 (800-2½)