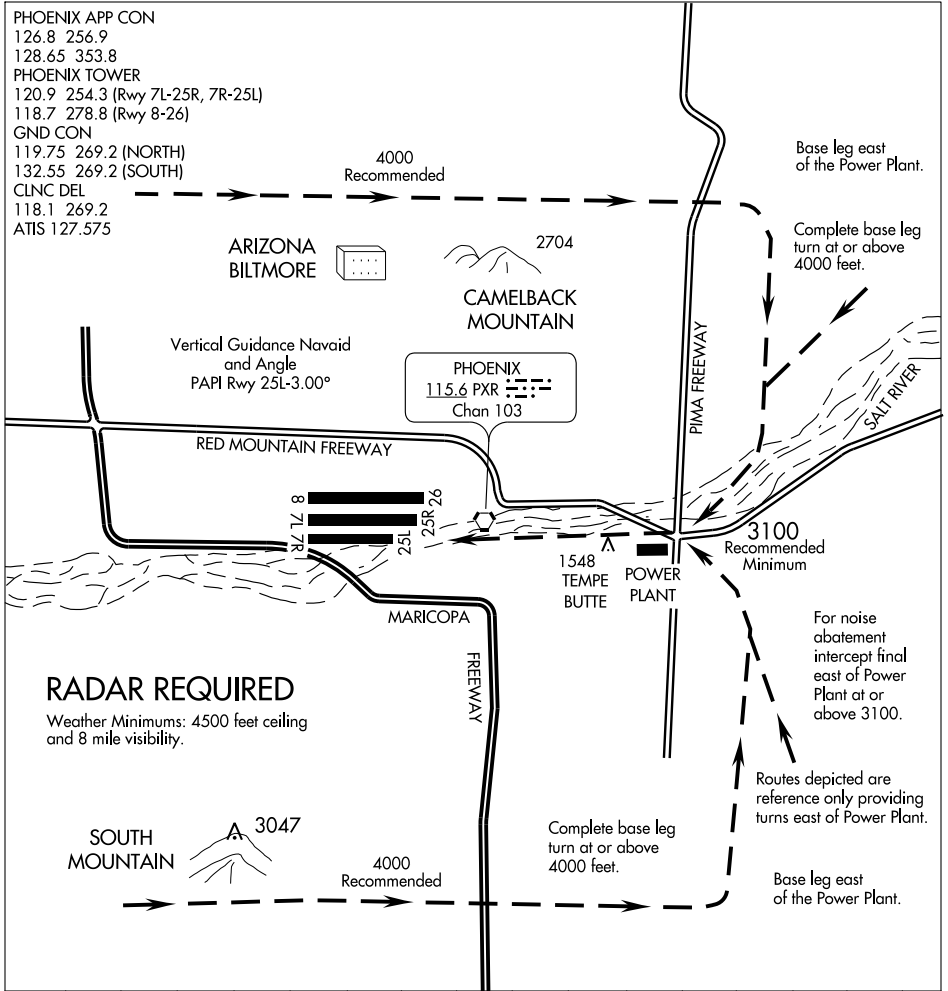


RIVER VISUAL RWY 25L

AL-322 (FAA)

PHOENIX SKY HARBOR INTL (PHX)
PHOENIX, ARIZONA

PHOENIX APP CON
 126.8 256.9
 128.65 353.8
 PHOENIX TOWER
 120.9 254.3 (Rwy 7L-25R, 7R-25L)
 118.7 278.8 (Rwy 8-26)
 GND CON
 119.75 269.2 (NORTH)
 132.55 269.2 (SOUTH)
 CLNC DEL
 118.1 269.2
 ATIS 127.575



SW-4, 19 NOV 2009 to 17 DEC 2009

SW-4, 19 NOV 2009 to 17 DEC 2009

RADAR REQUIRED

Weather Minimums: 4500 feet ceiling and 8 mile visibility.

SOUTH MOUNTAIN



4000 Recommended

Complete base leg turn at or above 4000 feet.

Base leg east of the Power Plant.

For noise abatement intercept final east of Power Plant at or above 3100.

Routes depicted are reference only providing turns east of Power Plant.

3100 Recommended Minimum

Base leg east of the Power Plant.

Complete base leg turn at or above 4000 feet.

1	2	3	4	5	6	7	8	9	10	11	12	13	14	15	16
---	---	---	---	---	---	---	---	---	----	----	----	----	----	----	----

RIVER VISUAL RWY 25L

When visual approaches to Runway 25L are in progress, clearances will be given utilizing in part the following phraseology:

"(IDENT) CLEARED FOR A RIVER VISUAL RUNWAY 25L APPROACH"

RIVER VISUAL RWY 25L

33°26'N-112°01'W

PHOENIX, ARIZONA
PHOENIX SKY HARBOR INTL (PHX)