

APP CRS	Rwy Idg	10300
258°	TDZE	1134
	Apt Elev	1135

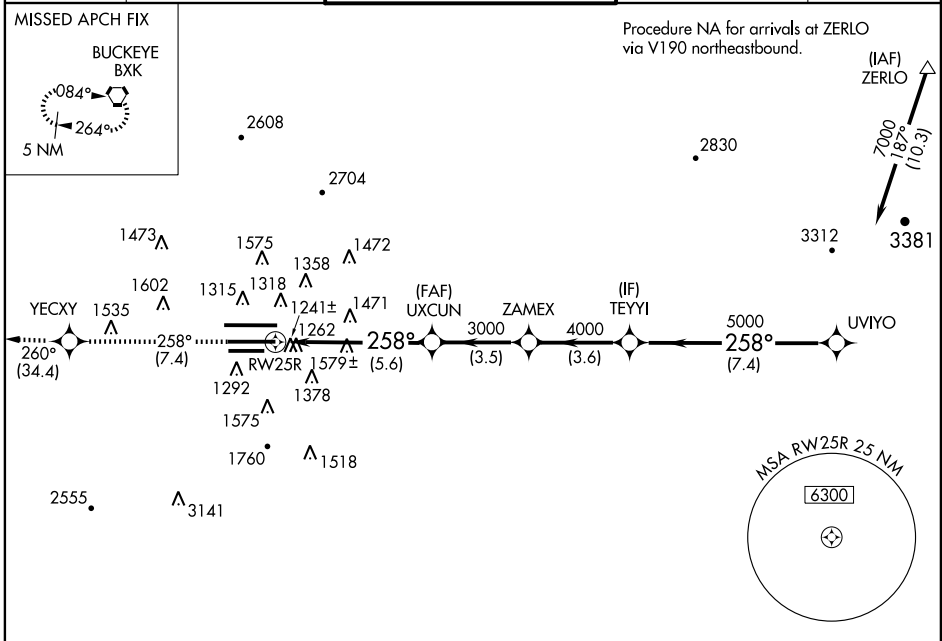
RNAV (RNP) Z RWY 25R

PHOENIX SKY HARBOR INTL (PHX)

▼ Visibility reduction by helicopters NA. GPS required.
For uncompensated Baro-VNAV systems, procedure NA below
1°C (34°F) or above 46°C (116°F).

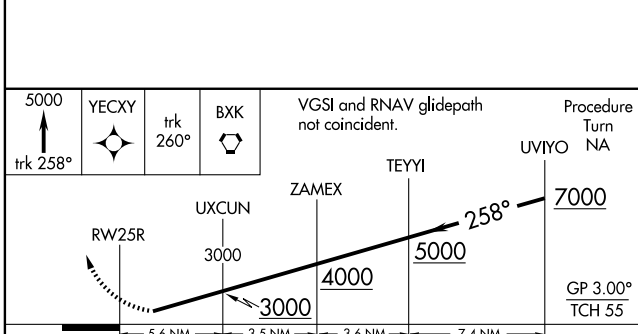
MISSED APPROACH: Climb to 5000 via track 258° to YECXY and via track 260° to BXK VORTAC and hold.

ATIS	PHOENIX APP CON	PHOENIX TOWER	GND CON	CLNC DEL
127.575	128.65 353.8	118.7 278.8 (Rwy 8-26) 120.9 254.3 (Rwy 7L-25R, 7R-25L)	119.75 269.2 (N) 132.55 269.2 (S)	118.1 269.2



SW-4, 19 NOV 2009 to 17 DEC 2009

SW-4, 19 NOV 2009 to 17 DEC 2009



CATEGORY	A	B	C	D
RNP 0.20 DA	1597-1½ 463 (500-1½)			
RNP 0.30 DA	1622-1¾ 488 (500-1¾)			

SPECIAL AIRCRAFT AND AIRCREW AUTHORIZATION REQUIRED

