

APP CRS	Rwy Idg	11489
258°	TDZE	1135
	Apt Elev	1135

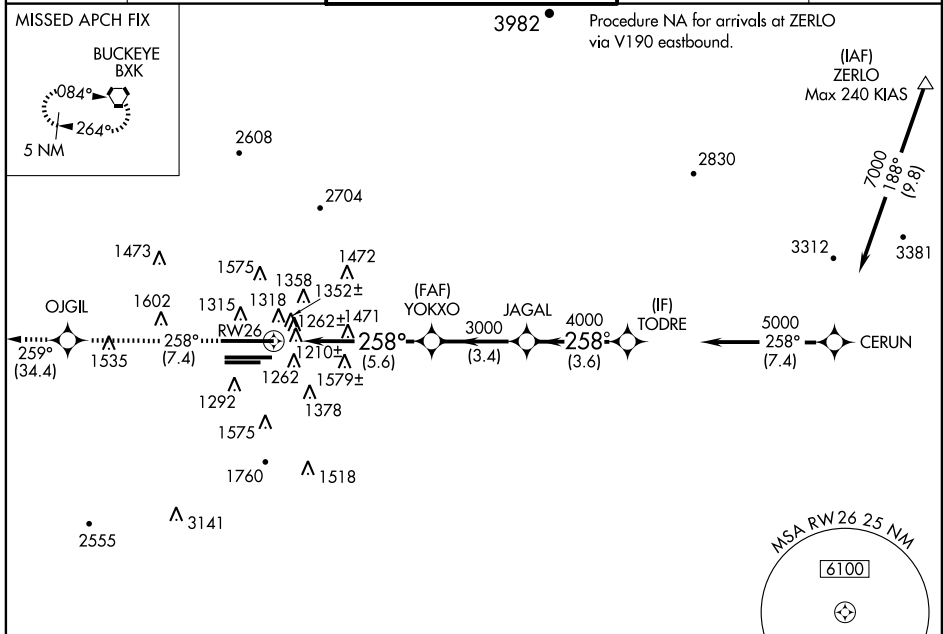
RNAV (RNP) Z RWY 26

PHOENIX SKY HARBOR INTL (PHX)

GPS required.
For uncompensated Baro-VNAV systems, procedure NA below 1°C (34°F) or above 46°C (116°F).

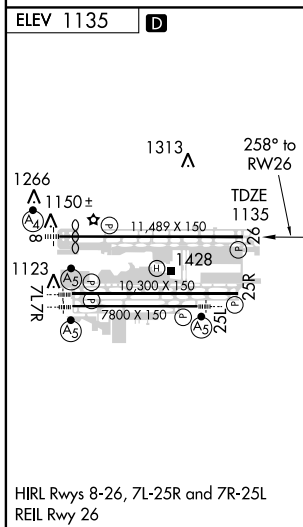
MISSED APPROACH: Climb to 5000 via track 258° to OJGIL and via track 259° to BXK VORTAC and hold.

ATIS 127.575	PHOENIX APP CON 128.65 353.8	PHOENIX TOWER 118.7 278.8 (Rwy 8-26) 120.9 254.3 (Rwy 7L-25R, 7R-25L)	GND CON 119.75 269.2 (N) 132.55 269.2 (S)	CLNC DEL 118.1 269.2
------------------------	--	---	---	--------------------------------



SW-4, 19 NOV 2009 to 17 DEC 2009

SW-4, 19 NOV 2009 to 17 DEC 2009



5000	OJGIL	trk 259°	BXK	VGSJ and RNAV glidepath not coincident.	Procedure Turn NA
5000	JAGAL	4000	3000	3000	5000
5.6 NM		3.4 NM		3.6 NM	

CATEGORY	A	B	C	D
RNP 0.11 DA		1490-1¼	355 (400-1¼)	
RNP 0.20 DA		1590-1½	455 (500-1½)	
RNP 0.30 DA		1654-1¾	519 (600-1¾)	

SPECIAL AIRCRAFT AND AIRCREW AUTHORIZATION REQUIRED