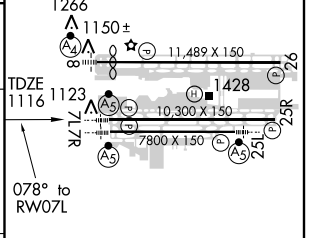
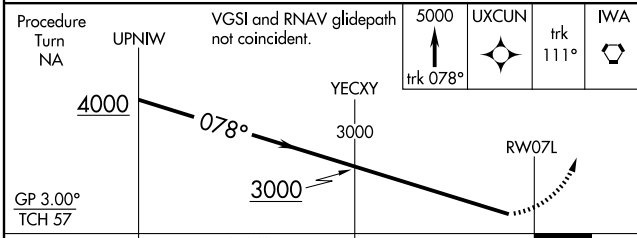
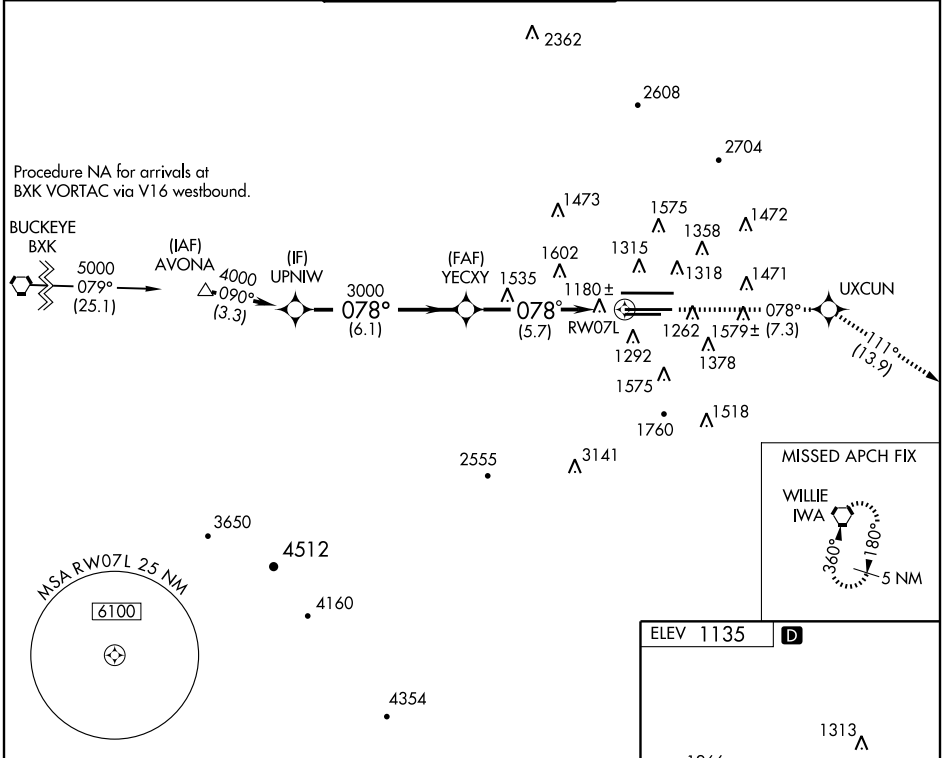


APP CRS	Rwy Idg	10300
078°	TDZE	1116
	Apt Elev	1135

RNAV (RNP) Z RWY 7L

PHOENIX SKY HARBOR INTL (PHX)

▼ GPS required. Visibility reduction by helicopters NA. For uncompensated Baro-VNAV systems, procedure NA below 1°C (34°F) or above 46°C (116°F). For inoperative MALSR, increase RNP 0.30 all Cats visibility to 1½ mile.	MALSR 	MISSED APPROACH: Climb to 5000 via track 078° to UXCUN and via track 111° to IWA VORTAC and hold.
	ATIS 127.575	PHOENIX APP CON 128.65 353.8
		GND CON 119.75 269.2 (N) 132.55 269.2 (S)
		CLNC DEL 118.1 269.2



CATEGORY	A	B	C	D
RNP 0.30 DA	1523/50		407 (400-1)	

SPECIAL AIRCRAFT AND AIRCREW AUTHORIZATION REQUIRED

HIRL Rwy 8-26, 7L-25R and 7R-25L
REIL Rwy 26

SW-4, 11 MAR 2010 to 08 APR 2010

SW-4, 11 MAR 2010 to 08 APR 2010