


APP CRS	Rwy Idg	10591
078°	TDZE	1118
	Apt Elev	1135

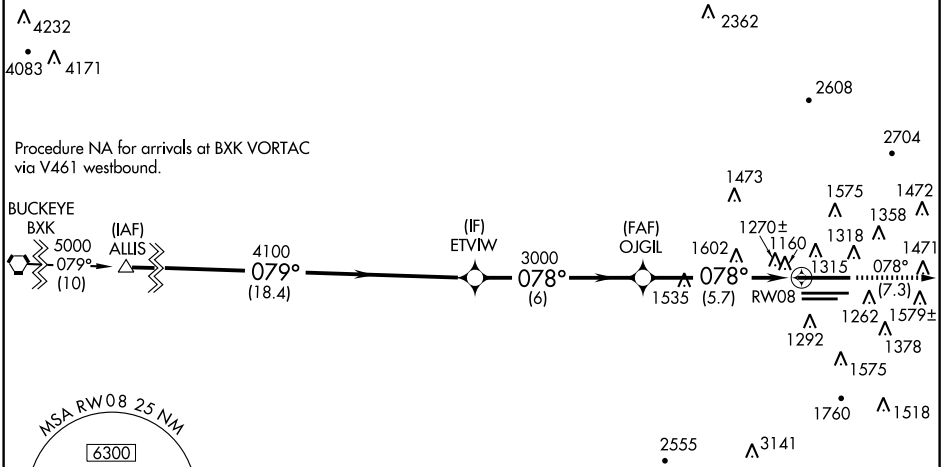
RNAV (RNP) Z RWY 8

PHOENIX SKY HARBOR INTL (PHX)

▼ GPS required. Visibility reduction by helicopters NA.
 For uncompensated Baro-VNAV systems, procedure NA below 1°C (34°F) or above 46°C (116°F).
 For inoperative MALSF, increase RNP 0.13 all Cats visibility to 1¼, and RNP 0.30 all Cats visibility to 1¾.

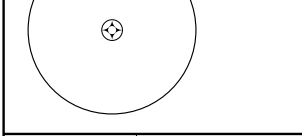
MALSF  MISSED APPROACH: Climb to 5000 via track 078° to YOKXO and via track 114° to IWA VORTAC and hold.

ATIS 127.575	PHOENIX APP CON 128.65 353.8	PHOENIX TOWER 118.7 278.8 (Rwy 8-26) 120.9 254.3 (Rwy 7L-25R, 7R-25L)	GND CON 119.75 269.2 (N) 132.55 269.2 (S)	CLNC DEL 118.1 269.2
------------------------	----------------------------------------	-------------------------------------------------------------------------------------------	---------------------------------------------------------------	--------------------------------

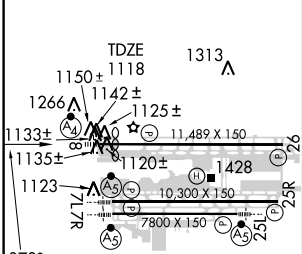


SW-4, 19 NOV 2009 to 17 DEC 2009

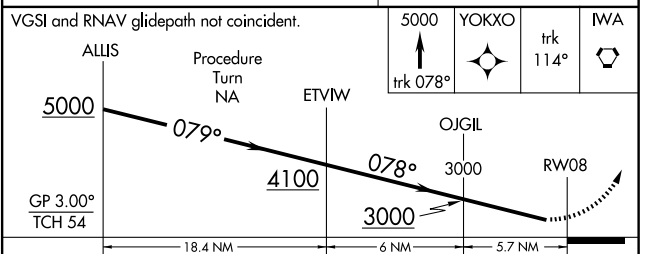
SW-4, 19 NOV 2009 to 17 DEC 2009



ELEV 1135	D
-----------	----------



HIRL Rwy 8-26, 7L-25R and 7R-25L
 REIL Rwy 26



CATEGORY	A	B	C	D
RNP 0.13 DA	1478-1 360 (400-1)			
RNP 0.30 DA	1603-1½ 485 (500-1½)			

SPECIAL AIRCRAFT AND AIRCREW AUTHORIZATION REQUIRED