


RNAV (GPS) Y RWY 25L

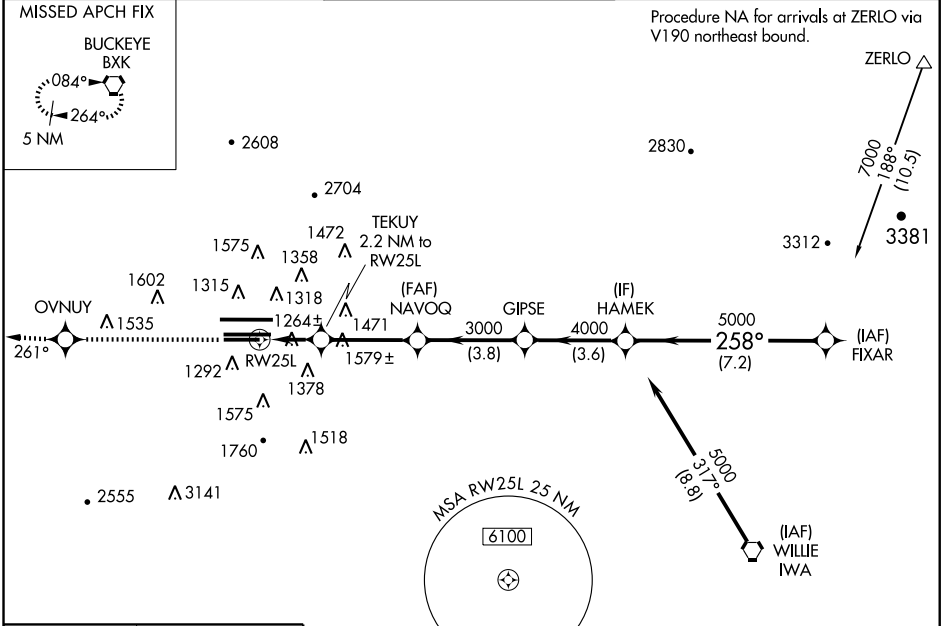
PHOENIX SKY HARBOR INTL (PHX)

WAAS CH 82211 W25B	APP CRS 258°	Rwy Idg TDZE Apt Elev	7800 1126 1135
--	------------------------	-----------------------------	---

⚠ For inoperative MALSR, increase LPV all Cats visibility to 1¼.
⚠ For uncompensated Baro-VNAV systems, LNAV/VNAV NA below -17°C (2°F) or above 46°C (114°F).
 DME/DME RNP-0.3 NA.

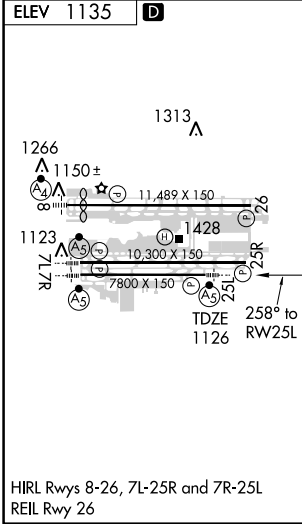
MALSR

MISSED APPROACH: Climb to 5000 direct OVNUI and via 261° track to BXX VORTAC and hold.

ATIS 127.575	PHOENIX APP CON 128.65 353.8	PHOENIX TOWER 118.7 278.8 (Rwy 8-26) 120.9 254.3 (Rwy 7L-25R, 7R-25L)	GND CON 119.75 269.2 (N) 132.55 269.2 (S)	CLNC DEL 118.1 269.2
------------------------	--	---	---	--------------------------------



SW-4, 19 NOV 2009 to 17 DEC 2009

SW-4, 19 NOV 2009 to 17 DEC 2009



5000	OVNUI	261° track	BXX	VGS1 and RNAV glidepath not coincident.			
				GIPSE	HAMEK	FIXAR	
* LNAV only				TEKUY 2.2 NM to RWY 25L	NAVOQ	GIPSE	HAMEK
* 1.5 NM to RWY 25L				1880*	3000	4000	5000
RWY 25L				1.5 NM	0.7 NM	3.4 NM	3.8 NM
				3.6 NM	7.2 NM	7000	258°
				Procedure Turn NA	GS 3.00° TCH 49		
CATEGORY	A	B	C	D			
LPV DA	1482-3¼			356 (400-¾)			
LNAV/VNAV DA	1613-1¼			487 (500-1¼)			
LNAV MDA	1680-½	554 (600-½)	1680-1	554 (600-1)	1680-1¼	554 (600-1¼)	
CIRCLING	1740-1	605 (700-1)	1740-1¾	605 (700-1¾)	1920-2½	785 (800-2½)	