

PHOENIX, ARIZONA

AL-322 (FAA)

# RNAV (GPS) Y RWY 25R

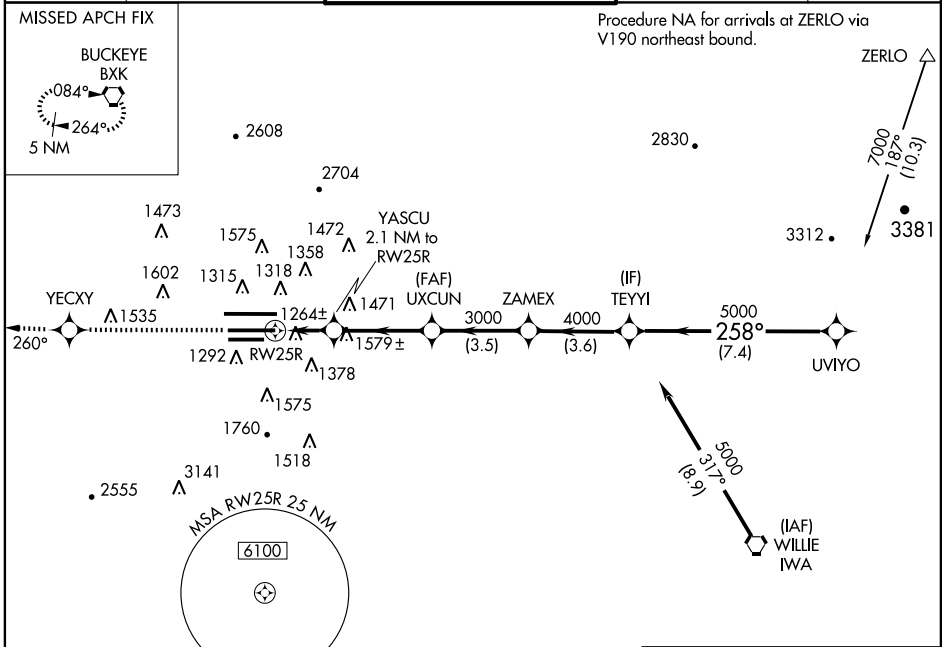
PHOENIX SKY HARBOR INTL (PHX)

WAAS CH <b>40022</b> <b>W25A</b>	APP CRS <b>258°</b>	Rwy Idg <b>10300</b> TDZE <b>1134</b> Apt Elev <b>1135</b>
--	------------------------	--

**⚠** For uncompensated Baro-VNAV systems, LNAV/VNAV NA below -17°C (2°F) or above 46°C (114°F).  
**⚠** DME/DME RNP-0.3 NA.

MISSED APPROACH: Climb to 5000 direct YECXY and via 260° track to BXK VORTAC and hold.

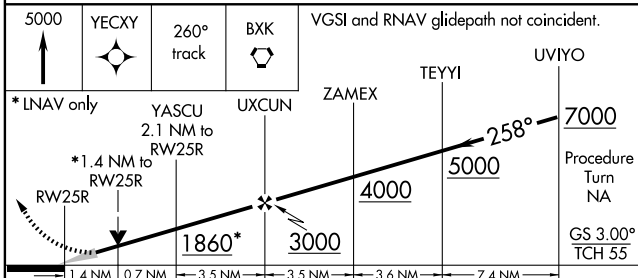
ATIS <b>127.575</b>	PHOENIX APP CON <b>128.65 353.8</b>	PHOENIX TOWER <b>118.7 278.8</b> (Rwy 8-26) <b>120.9 254.3</b> (Rwy 7L-25R, 7R-25L)	GND CON <b>119.75 269.2</b> (N) <b>132.55 269.2</b> (S)	CLNC DEL <b>118.1 269.2</b>
------------------------	--	---	---	--------------------------------



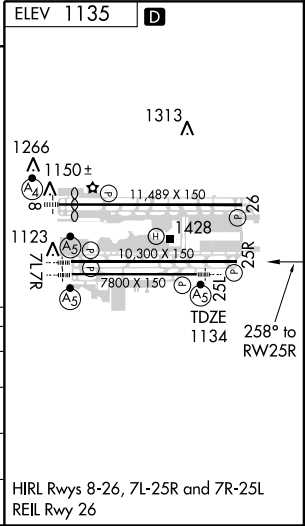
SW-4, 19 NOV 2009 to 17 DEC 2009

SW-4, 19 NOV 2009 to 17 DEC 2009

5000	YECXY	260° track	BXK	VGS1 and RNAV glidepath not coincident.
------	-------	------------	-----	---



CATEGORY	A	B	C	D
LPV DA		1439-1	305 (400-1)	
LNAV/VNAV DA		1580-1½	446 (500-1½)	
LNAV MDA	1640-1	506 (600-1)	1640-1½	506 (600-1½)
CIRCLING	1740-1	605 (700-1)	1740-1¾ 605 (700-1¾)	1920-2½ 785 (800-2½)



PHOENIX, ARIZONA  
Amdt 2 09183

33° 26' N - 112° 01' W

# RNAV (GPS) Y RWY 25R

HIRL Rwy 8-26, 7L-25R and 7R-25L  
REIL Rwy 26