

PHOENIX, ARIZONA

AL-322 (FAA)

RNAV (GPS) Y RWY 26

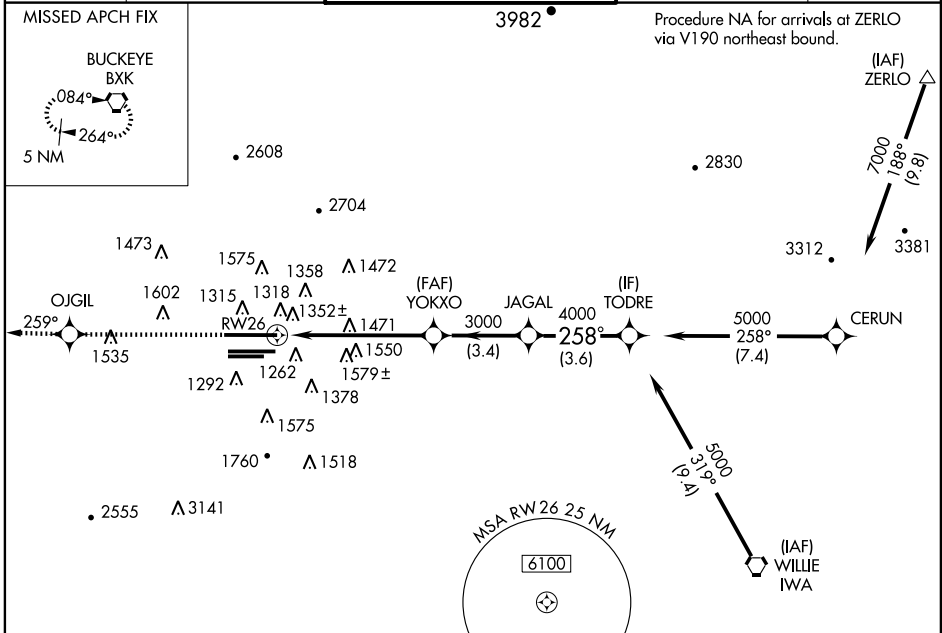
PHOENIX SKY HARBOR INTL (PHX)

WAAS CH 70321 W26A	APP CRS 258°	Rwy Idg 11489 TDZE 1135 Apt Elev 1135
--	------------------------	--

▽ For uncompensated Baro-VNAV systems, LNAV/VNAV
△ NA below -17°C (2°F) or above 46°C (114°F).
 DME/DME RNP- 0.3 NA.

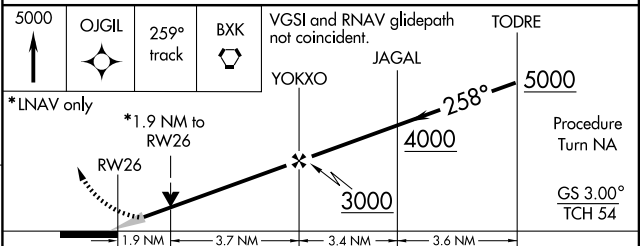
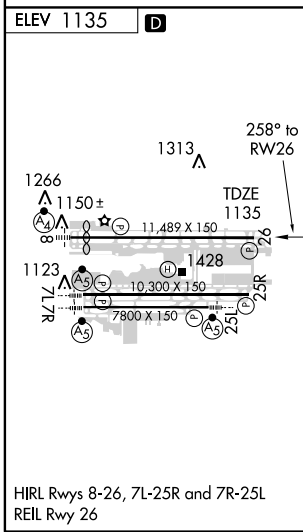
MISSED APPROACH: Climb to 5000 direct OJGIL and via 259° track to BXK VORTAC and hold.

ATIS 127.575	PHOENIX APP CON 128.65 353.8	PHOENIX TOWER 118.7 278.8 (Rwy 8-26) 120.9 254.3 (Rwy 7L-25R, 7R-25L)	GND CON 119.75 269.2 (N) 132.55 269.2 (S)	CLNC DEL 118.1 269.2
------------------------	--	---	---	--------------------------------



SW-4, 19 NOV 2009 to 17 DEC 2009

SW-4, 19 NOV 2009 to 17 DEC 2009



CATEGORY	A	B	C	D
LPV DA	1436-1 301 (400-1)			
LNAV/VNAV DA	1659-1 ³ / ₄ 524 (600-1 ³ / ₄)			
LNAV MDA	1800-1	665 (700-1)	1800-1 ³ / ₄ 665 (700-1 ³ / ₄)	1800-2 665 (700-2)
CIRCLING	1800-1	665 (700-1)	1800-1 ³ / ₄ 665 (700-1 ³ / ₄)	1920-2 1/2 785 (800-2 1/2)

PHOENIX, ARIZONA
Amdt 2 09183

33°26'N - 112°01'W

PHOENIX SKY HARBOR INTL (PHX)

RNAV (GPS) Y RWY 26