

RNAV (GPS) Y RWY 7L

PHOENIX SKY HARBOR INTL (PHX)

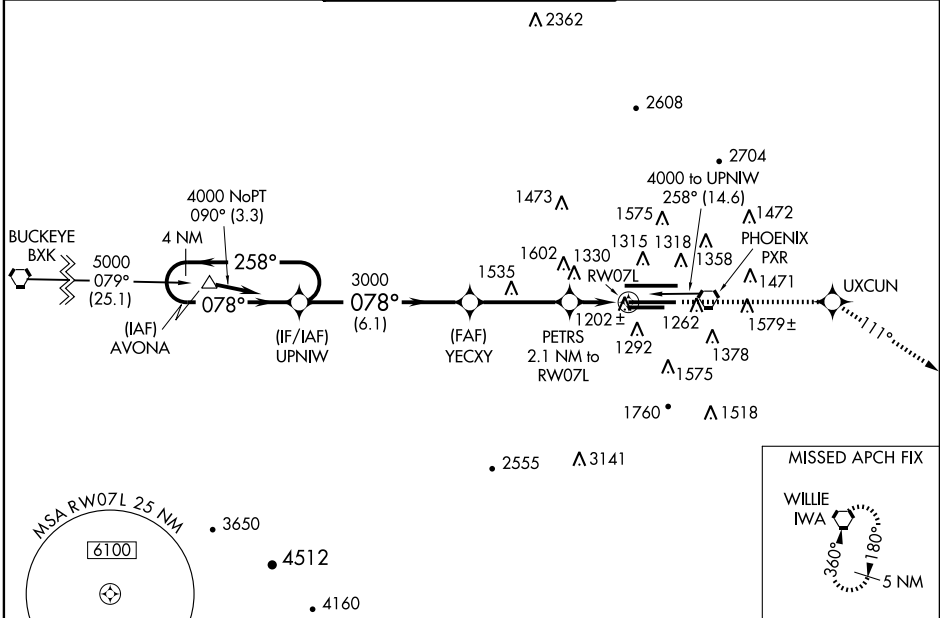
WAAS CH 65811 W07A	APP CRS 078°	Rwy Idg 10300 TDZE 1116 Apt Elev 1135
--	------------------------	--

▼ For inoperative MALS, increase LPV all Cats visibility to RVR 5000.
▲ For uncompensated Baro-VNAV systems, LNAV/VNAV NA below -17°C (2°F) or above 46°C (114°F).
 DME/DME RNP- 0.3 NA.



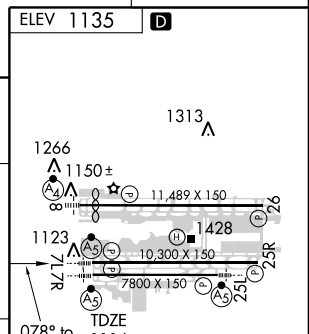
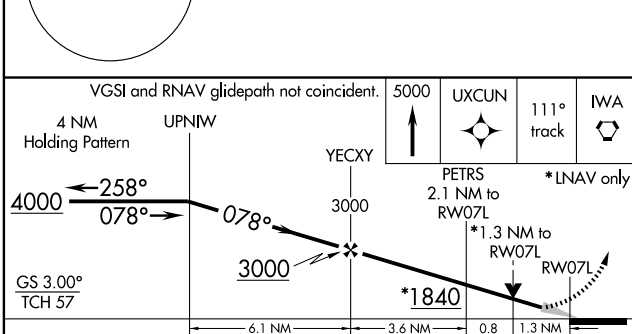
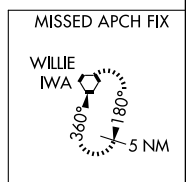
MISSED APPROACH: Climb to 5000 direct UXCUN and via 111° track to IWA VORTAC and hold.

ATIS 127.575	PHOENIX APP CON 128.65 353.8	PHOENIX TOWER 118.7 278.8 (Rwy 8-26) 120.9 254.3 (Rwy 7L-25R, 7R-25L)	GND CON 119.75 269.2 (N) 132.55 269.2 (S)	CLNC DEL 118.1 269.2
------------------------	--	---	---	--------------------------------



SW-4, 19 NOV 2009 to 17 DEC 2009

SW-4, 19 NOV 2009 to 17 DEC 2009



CATEGORY	A	B	C	D
LPV DA		1389/24	273 (300-½)	
LNAV/VNAV DA		1519/50	403 (400-1)	
LNAV MDA	1580/24	464 (500-½)	1580/40 464 (500-¾)	1580/50 464 (500-1)
CIRCLING	1740-1	605 (700-1)	1740-1¾ 605 (700-1¾)	1920-2½ 785 (800-2½)

HIRL Rwy 8-26, 7L-25R and 7R-25L
 REIL Rwy 26