

RNAV (GPS) Y RWY 7R

PHOENIX SKY HARBOR INTL (PHX)

WAAS CH 73011 W07B	APP CRS 078°	Rwy Idg TDZE 1116 Apt Elev 1135
--	------------------------	---

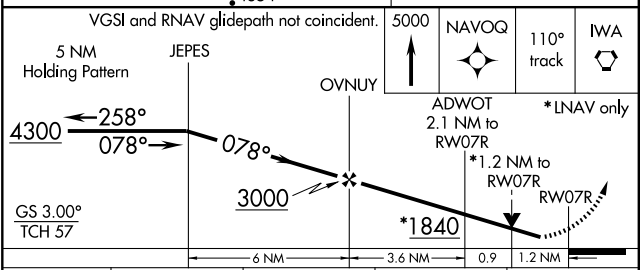
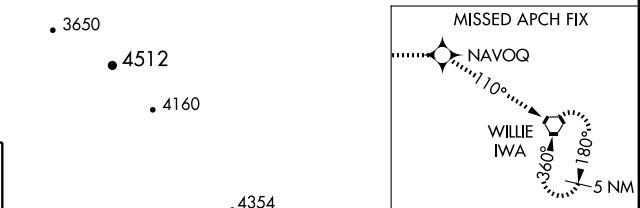
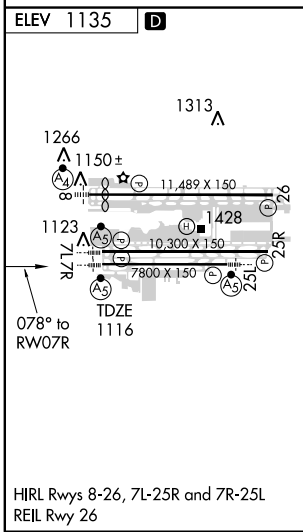
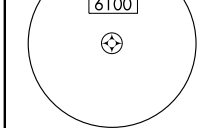
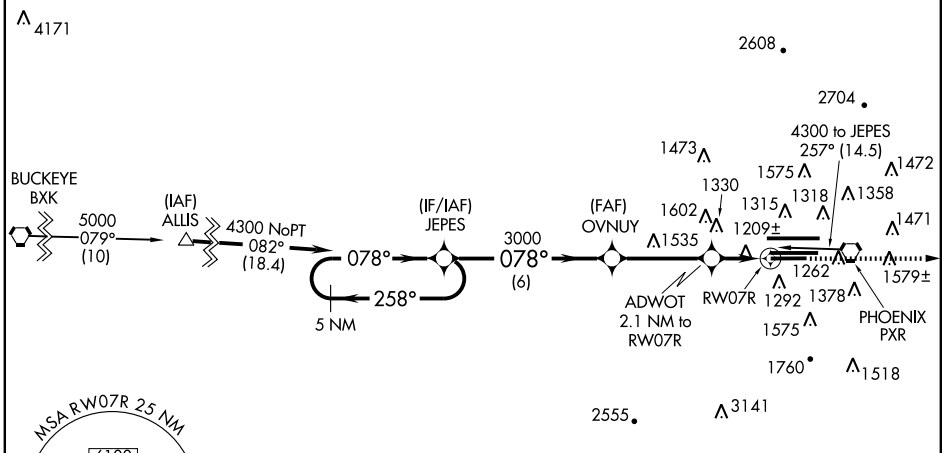
▼ For inoperative MALSR, increase LNAV Cat A/B visibility to 1 mile.
▲ For uncompensated Baro-VNAV systems, LNAV/VNAV NA below -17°C (2°F) or above 46°C (114°F). DME/DME RNP- 0.3 NA.
 Visibility reduction by helicopters NA.

MALSR



MISSED APPROACH: Climb to 5000 direct NAVOQ and via 110° track to IWA VORTAC and hold.

ATIS 127.575	PHOENIX APP CON 128.65 353.8	PHOENIX TOWER 118.7 278.8 (Rwy 8-26) 120.9 254.3 (Rwy 7L-25R, 7R-25L)	GND CON 119.75 269.2 (N) 132.55 269.2 (S)	CLNC DEL 118.1 269.2
------------------------	--	---	---	--------------------------------



CATEGORY	A	B	C	D
LPV DA		1390-3/4	274 (300-3/4)	
LNAV/VNAV DA		1520-1	404 (400-1)	
LNAV MDA	1580-3/4	464 (500-3/4)		1580-1 464 (500-1)
CIRCLING	1740-1	605 (700-1)	1740-1 3/4 605 (700-1 3/4)	1920-2 1/2 785 (800-2 1/2)

SW-4, 19 NOV 2009 to 17 DEC 2009

SW-4, 19 NOV 2009 to 17 DEC 2009