

ARLIN THREE ARRIVAL

ST-322 (FAA)

PHOENIX, ARIZONA

6000 2009 NOV 19 17 DEC 2009

BLYTHE TRANSITION (BLH.ARLIN3): From over BLH VORTAC via BLH R-089 and IWA R-256 to ARLIN INT. Thence....

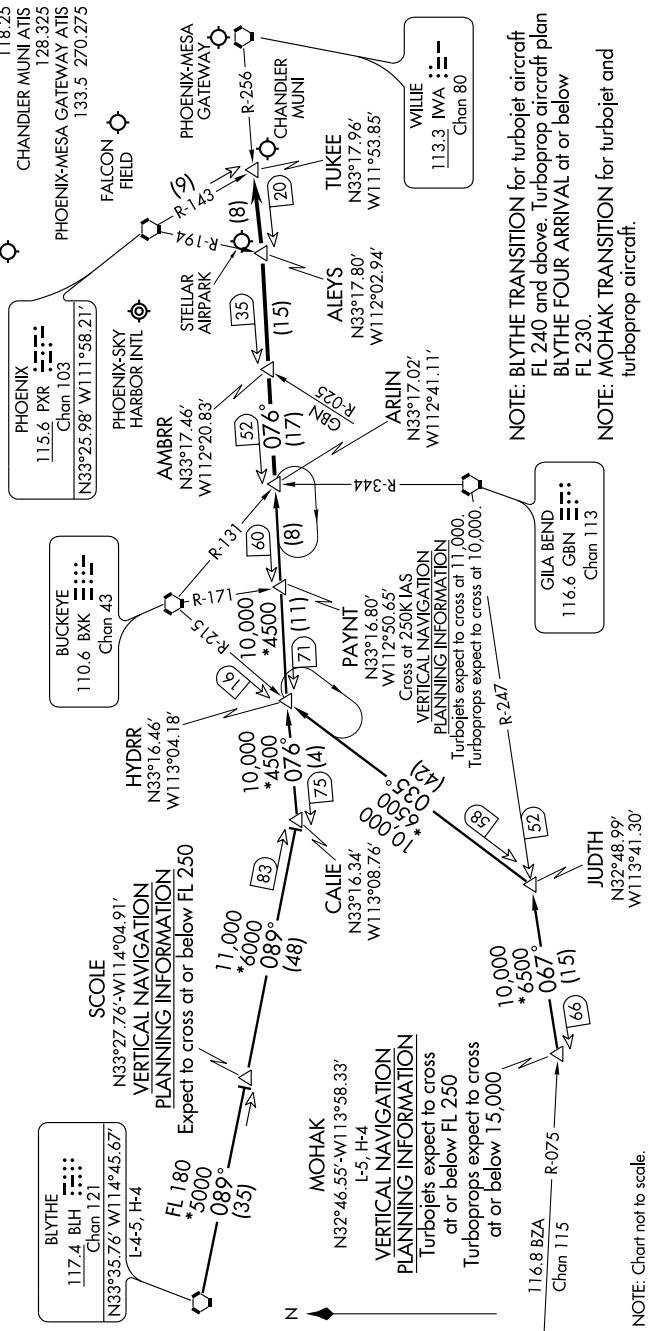
MOHAK TRANSITION (MOHAK.ARLIN3): From over MOHAK INT via GBN R-247 and BXK R-215 to HYDRR INT, then via IWA R-256 to ARLIN INT. Thence....

.... From over ARLIN INT:

PHOENIX SKY HARBOR INTL: Rwy 7L/R or 8: Expect vectors after ARLIN INT to final approach course; Rwy 25L/R or 26: via IWA R-256 to TUKEE INT. Expect vectors prior to TUKEE INT to final approach course.

SATELLITE AIRPORTS: Expect vectors after passing TUKEE INT.

LOST COMMUNICATIONS: After ARLIN INT, via IWA R-256 and PXR R-143 to PXR VORTAC.



ARLIN THREE ARRIVAL

PHOENIX, ARIZONA

SW-4, 19 NOV 2009 to 17 DEC 2009

NOTE: Chart not to scale.