

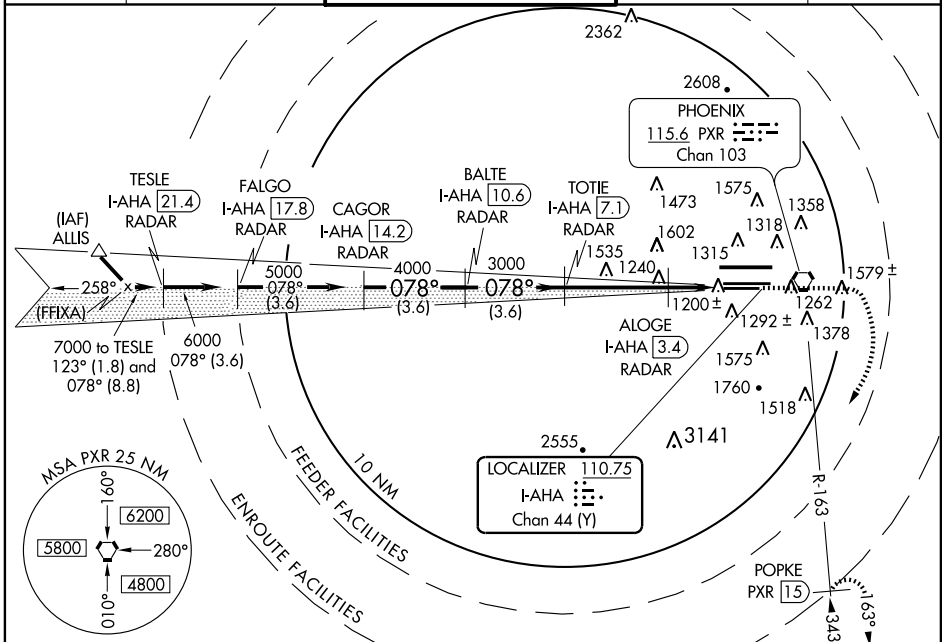
ILS or LOC RWY 7R
PHOENIX SKY HARBOR INTL (PHX)

LOC/DME I-AHA 110.75 Chan 44 (Y)	APP CRS 078°	Rwy Idg 7800	TDZE 1116
		Apt Elev 1135	

⚠ Inoperative table does not apply to S-ILS 7R.
For inoperative MALS/R, increase S-LOC 7R Cat A/B visibility to 1 mile.
Visibility reduction by helicopters NA.

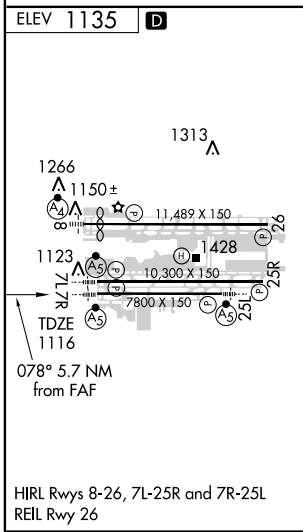
MALS/R MISSED APPROACH: Climb to 3000 then climbing right turn to 5000 via heading 250° and PXR R-163 to POPKE/15 DME and hold.

ATIS 127.575	PHOENIX APP CON 128.65 353.8	PHOENIX TOWER 118.7 278.8 (Rwy 8-26) 120.9 254.3 (Rwy 7L-25R, 7R-25L)	GND CON 119.75 269.2 (N) 132.55 269.2 (S)	CLNC DEL 118.1 269.2
------------------------	--	---	---	--------------------------------



SW-4, 11 MAR 2010 to 08 APR 2010

SW-4, 11 MAR 2010 to 08 APR 2010



DME or RADAR REQUIRED
RADAR REQUIRED for simultaneous approaches.

Procedure Turn NA

Use I-AHA DME when on LOC course.

3000	5000	PXR R-163	POPKE PXR
↑	↘ HDG 250°	115.6	[15]

3.6 NM	3.6 NM	3.7 NM	2 NM	
CATEGORY	A	B	C	D
S-ILS 7R	1363- ³ / ₄		247 (300- ³ / ₄)	
S-LOC 7R	1520- ³ / ₄		404 (400- ³ / ₄)	
CIRCLING	1740-1 605 (700-1)		1740-1 ³ / ₄ 605 (700-1 ³ / ₄) 1920-2 ¹ / ₂ 785 (800-2 ¹ / ₂)	

GS 3.00° TCH 57