

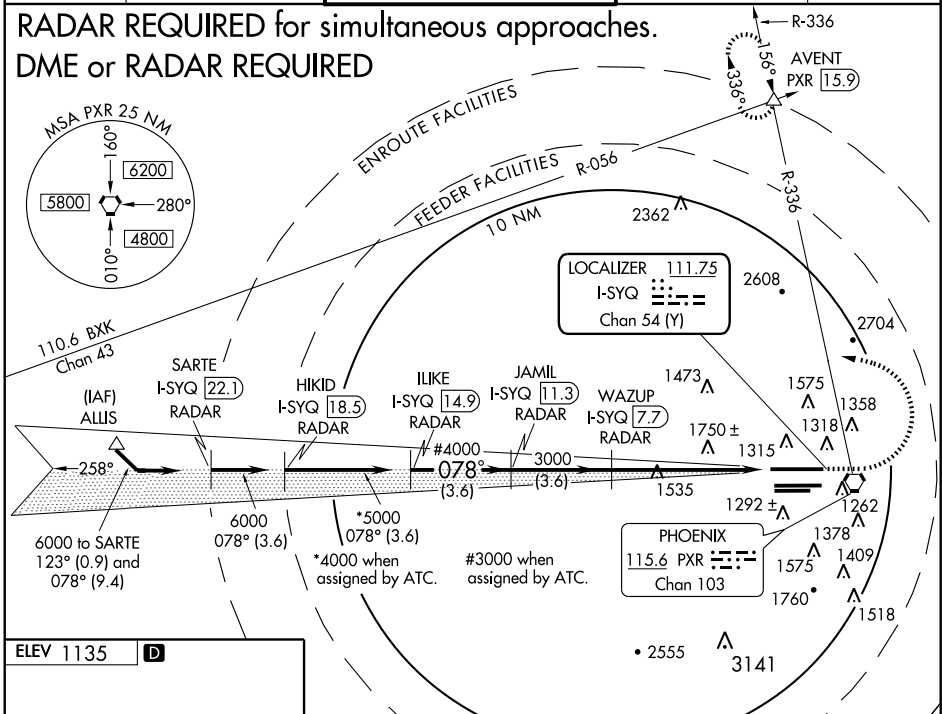
LOC/DME I-SYQ <b>111.75</b> Chan <b>54 (Y)</b>	APP CRS <b>078°</b>	Rwy ldg TDZE Apt Elev	<b>10591</b> <b>1118</b> <b>1135</b>
--	------------------------	-----------------------------	--

**ILS or LOC RWY 8**  
PHOENIX SKY HARBOR INTL (PHX)

<b>▽</b> <b>▲</b>	MALSF 	MISSED APPROACH: Climb to 3000, then climbing left turn to 5000 via heading 280° and PXR R-336 to AVENT/INT 15.9 DME and hold.
----------------------	-----------	--

ATIS <b>127.575</b>	PHOENIX APP CON <b>128.65 353.8</b>	PHOENIX TOWER <b>118.7 278.8</b> (Rwy 8-26) <b>120.9 254.3</b> (Rwy 7L-25R, 7R-25L)	GND CON <b>119.75 269.2 (N)</b> <b>132.55 269.2 (S)</b>	CLNC DEL <b>118.1 269.2</b>
------------------------	--	---	---	--------------------------------

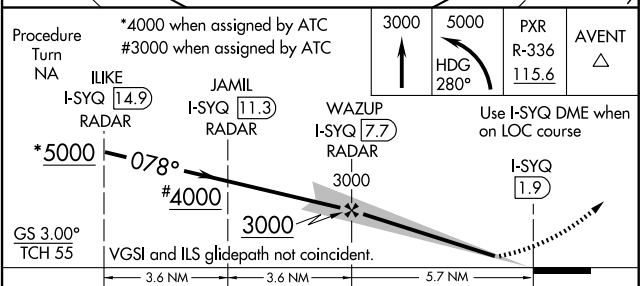
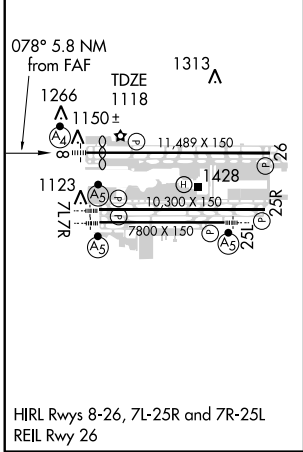
**RADAR REQUIRED for simultaneous approaches.**  
**DME or RADAR REQUIRED**



SW-4, 11 MAR 2010 to 08 APR 2010

SW-4, 11 MAR 2010 to 08 APR 2010

ELEV 1135	<b>D</b>
-----------	----------



CATEGORY	A	B	C	D
S-ILS 8	1368-1 250 (300-1)			
S-LOC 8	1860-1 742 (800-1)	1860-1¼ 742 (800-1¼)	1860-2¼ 742 (800-2¼)	1860-2½ 742 (800-2½)
CIRCLING	1860-1 725 (800-1)	1860-1¼ 725 (800-1¼)	1860-2¼ 725 (800-2¼)	1920-2½ 785 (800-2½)