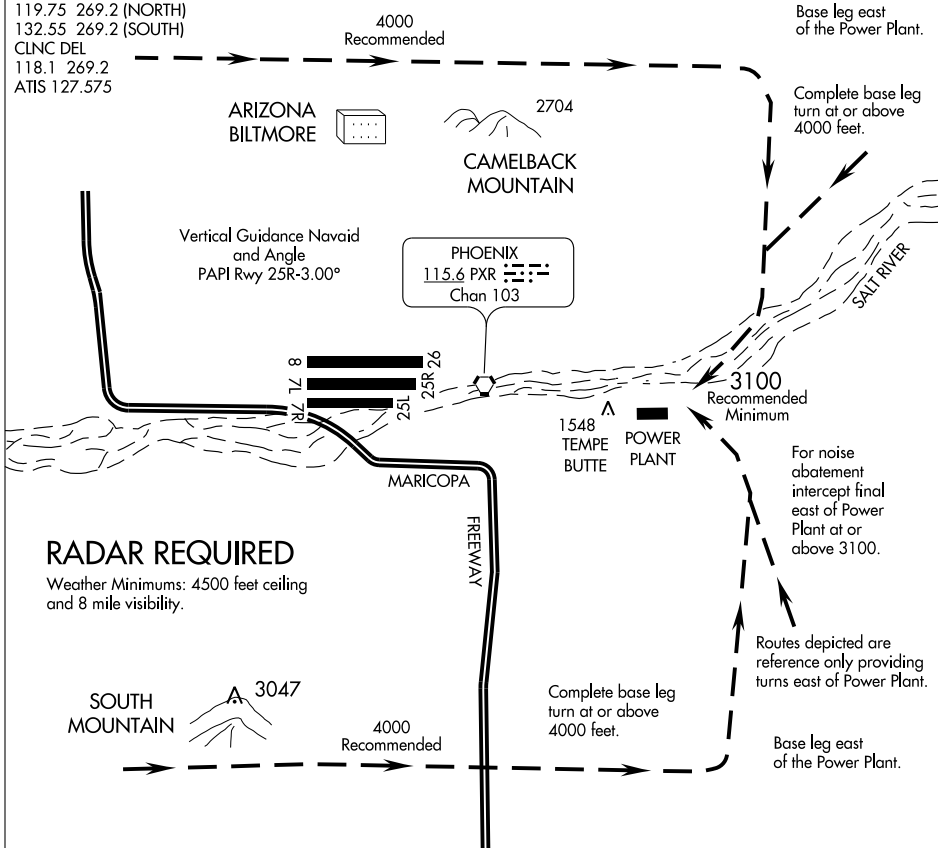


POWER PLANT VISUAL RWY 25R

PHOENIX APP CON
 126.8 256.9
 128.65 353.8
 PHOENIX TOWER
 120.9 254.3 (Rwy 7L-25R, 7R-25L)
 118.7 278.8 (Rwy 8-26)
 GND CON
 119.75 269.2 (NORTH)
 132.55 269.2 (SOUTH)
 CLNC DEL
 118.1 269.2
 ATIS 127.575

SW-4, 11 MAR 2010 to 08 APR 2010

SW-4, 11 MAR 2010 to 08 APR 2010



RADAR REQUIRED

Weather Minimums: 4500 feet ceiling and 8 mile visibility.

1 NM	2	3	4	5	6	7	8	9	10	11	12	13	14	15	16
------	---	---	---	---	---	---	---	---	----	----	----	----	----	----	----

POWER PLANT VISUAL RWY 25R

When visual approaches to Runway 25R are in progress, clearances will be given utilizing in part the following phraseology:

"(IDENT) CLEARED FOR A POWER PLANT VISUAL RUNWAY 25R APPROACH"

POWER PLANT VISUAL RWY 25R