

POCATELLO, IDAHO

AL-327 (FAA)

VOR or TACAN RWY 3

POCATELLO RGNL (PIH)

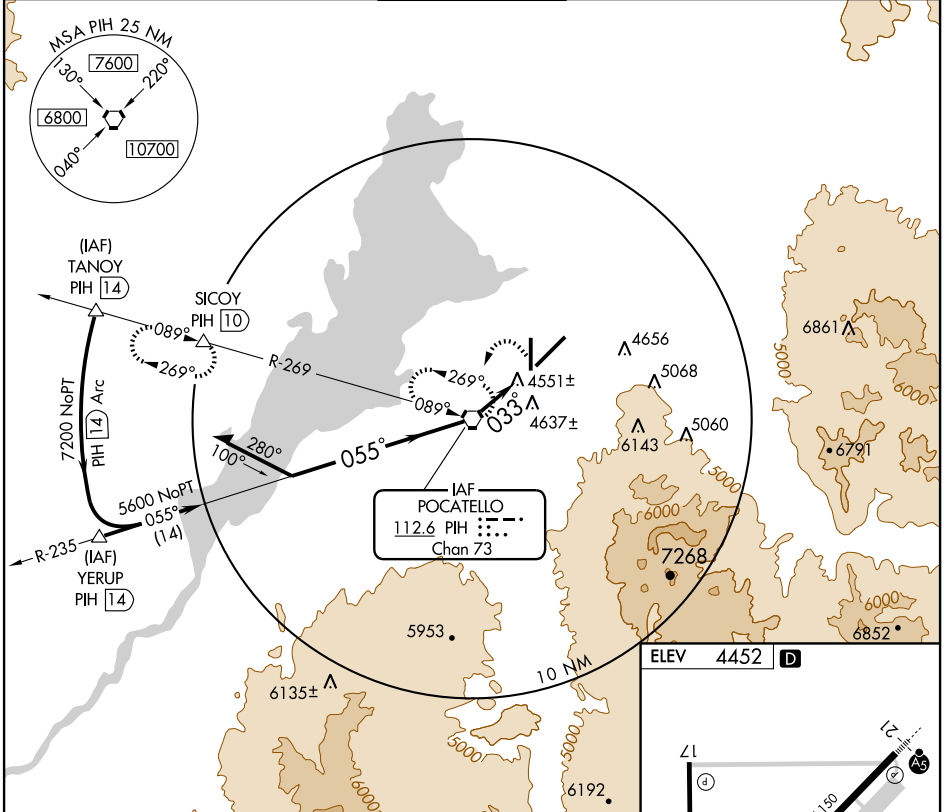
VORTAC PIH 112.6 Chan 73	APP CRS 033°	Rwy Idg TDZE Apt Elev 9060 4444 4452
---------------------------------------	------------------------	--

⚠ Circling not authorized Southeast of Rwy 3-21.
Inoperative table does not apply.



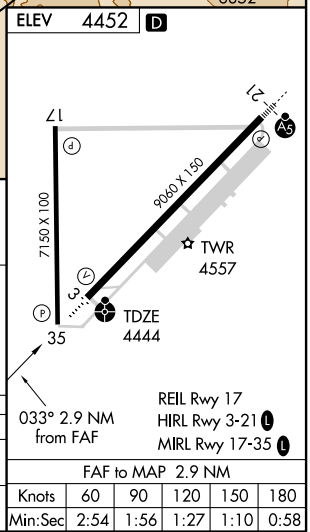
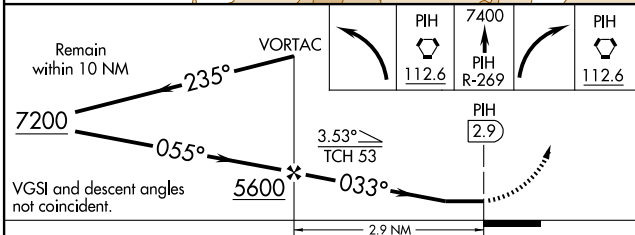
MISSED APPROACH: Climbing left turn direct PIH VORTAC, continue to 7400 via PIH VORTAC R-269, then right turn direct PIH VORTAC and hold (TACAN aircraft continue via R-269 to SICOY/PIH 10 DME and hold W, right turns, 089° inbound).

ATIS 135.625	SALT LAKE CENTER 128.35 239.25	POCATELLO TOWER* 119.1 (CTAF) 257.8	GND CON 121.9	UNICOM 122.95
------------------------	--	---	-------------------------	-------------------------



NW-1, 11 MAR 2010 to 08 APR 2010

NW-1, 11 MAR 2010 to 08 APR 2010



CATEGORY	A	B	C	D
S-3	4940-1	496 (500-1)		NA
CIRCLING	4940-1	488 (500-1)	4940-1½ 488 (500-1½)	NA

POCATELLO, IDAHO
Amdt 16 09351

42°55'N - 112°36'W

POCATELLO RGNL (PIH) VOR or TACAN RWY 3