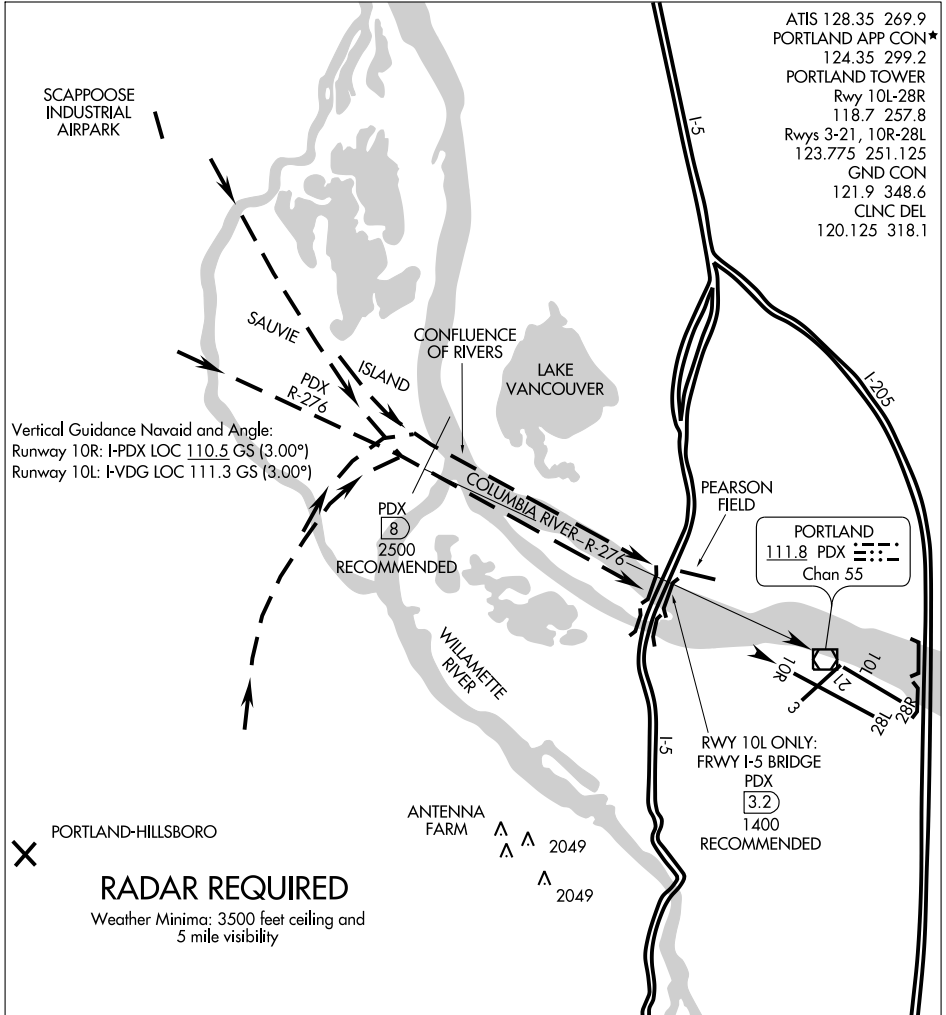


COLUMBIA VISUAL RWY 10L/R

AL-330 (FAA)

PORTLAND INTL (PDX)
PORTLAND, OREGON

ATIS 128.35 269.9
 PORTLAND APP CON*
 124.35 299.2
 PORTLAND TOWER
 Rwy 10L-28R
 118.7 257.8
 Rwys 3-21, 10R-28L
 123.775 251.125
 GND CON
 121.9 348.6
 CLNC DEL
 120.125 318.1



NW-1, 19 NOV 2009 to 17 DEC 2009

NW-1, 19 NOV 2009 to 17 DEC 2009

1	2	3	4	5	6	7	8	9	10	11	12	13	14	15	16
---	---	---	---	---	---	---	---	---	----	----	----	----	----	----	----

PROCEDURE NOT AUTHORIZED AT NIGHT.

COLUMBIA VISUAL RWY 10L/R

45°35'N-122°36'W

PORTLAND, OREGON
PORTLAND INTL (PDX)