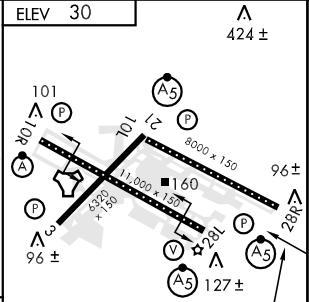
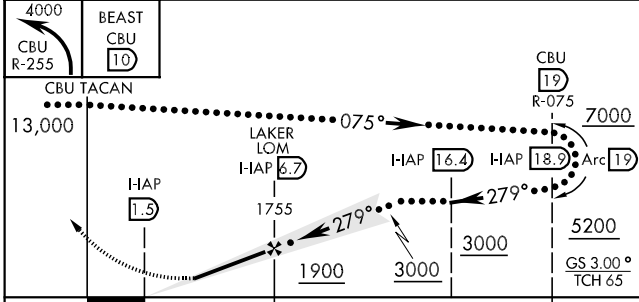
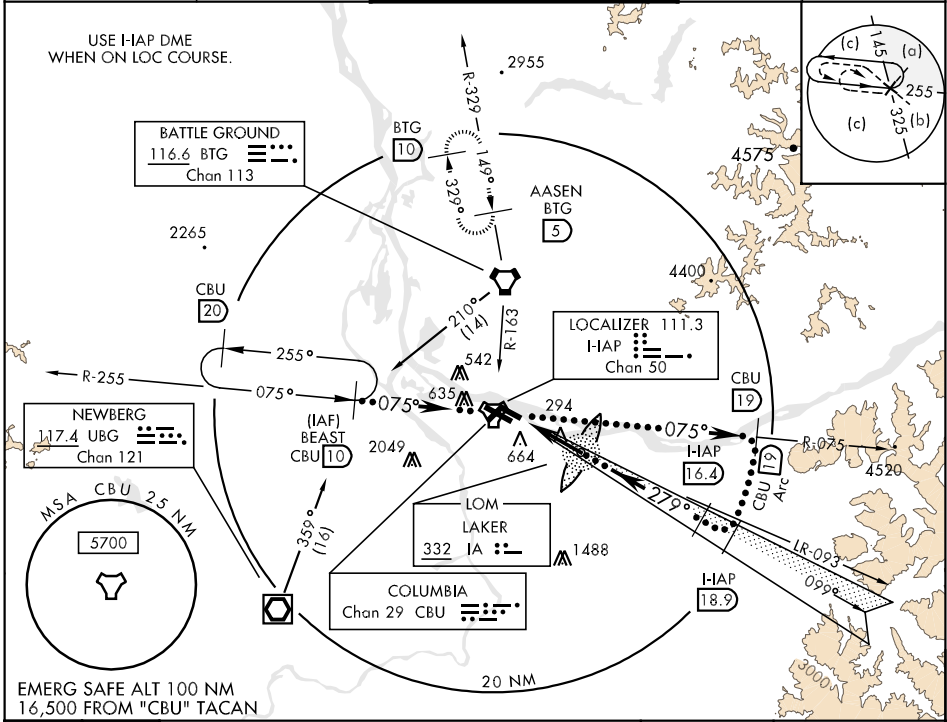


LOCALIZER I-HAP <b>111.3</b> Chan <b>50</b>	APCH CRS <b>279°</b>	Rwy Idg TDZE Arpt Elev <b>N/A</b> <b>N/A</b> <b>30</b>	JAL-330 [USAF]	PORTLAND INTL (KPDJ)
---	-------------------------	--	----------------	----------------------

**MISSED APPROACH:** Climbing left turn to 4000 via CBU TACAN R-255 to BEAST and hold, or when directed by ATC climbing right turn to 4000 via BTG VORTAC R-163 to BTG then via BTG R-329 to AASEN and hold. Hold NW, RT, 149° inbound.

ATIS ARR <b>128.35 269.9</b> DEP <b>120.625 239.25</b>	PORTLAND APP CON <b>124.35 299.2</b>	PORTLAND TOWER <b>118.7 257.8</b> Rwy 10L-28R <b>123.775 251.125</b> Rwy 3-21, 10R-28L	GND CON <b>121.9 348.6</b>	CLNC DEL <b>120.125 318.1</b>
--	---	--	-------------------------------	----------------------------------



CATEGORY	C	D	E
S-ILS 28R		NOT AUTHORIZED	
S-LOC 28R		NOT AUTHORIZED	
CIRCLING	740-2 710 (800-2)	1020-3 990 (1000-3)	1060-3 1030 (1100-3)

REIL Rwy 3-21	279° 5.2 NM from LOM
TDZ/CL 10R	
MIRL Rwy 3-21	
HIRL Rwy 10L-28R & 10R-28L	
LOC FAF to MAP 5.2 NM	
Knots	120 140 160 180 200
Min:Sec	2:36 2:14 1:57 1:44 1:34

NW-1, 22 OCT 2009 to 19 NOV 2009

NW-1, 22 OCT 2009 to 19 NOV 2009