

| | | |
|--|-------------------------|---|
| LOCALIZER I-PDX 110.5 Chan 42 | APCH CRS 101° | Rwy Idg 11,000 TDZE 24 Arprt Elev 30 |
|--|-------------------------|---|

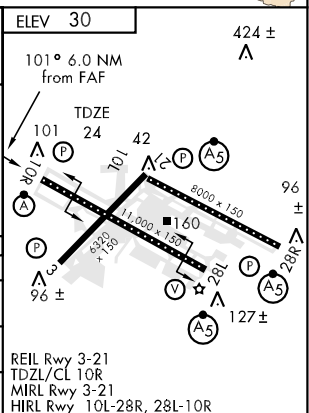
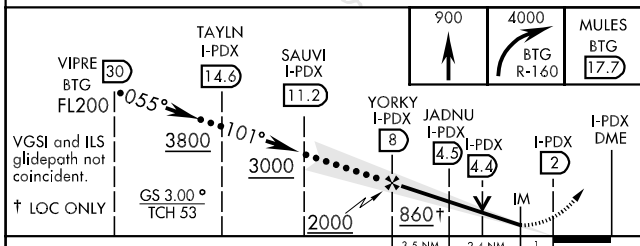
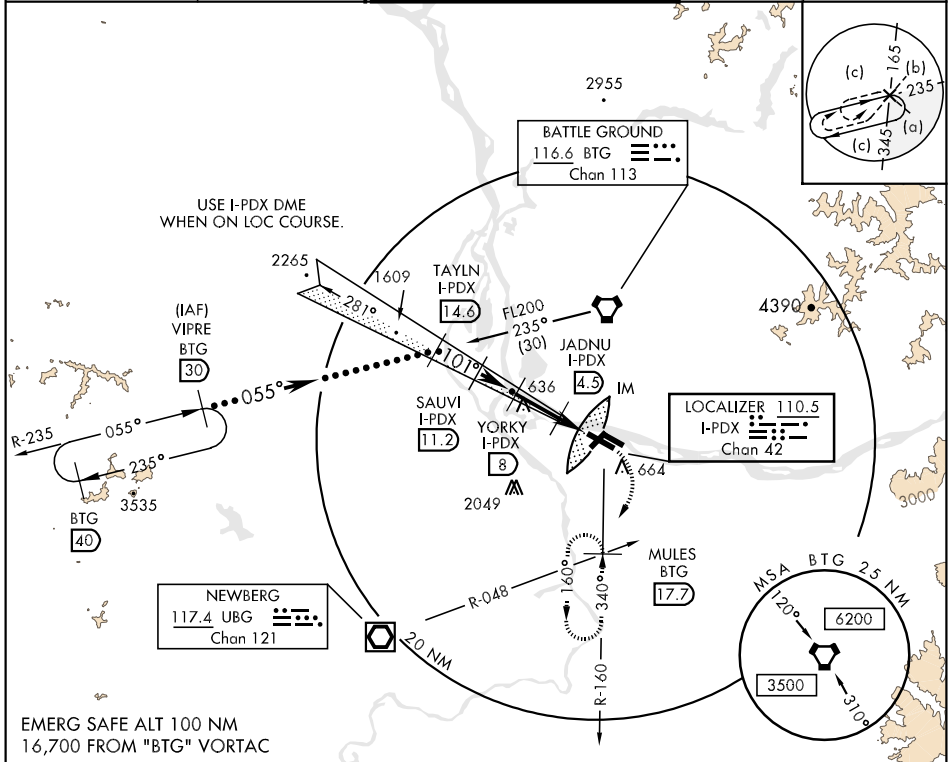
JAL-330 [USAF]

PORTLAND INTL (KPDX)

▼ * When ALS inop, increase RVR to 40 and vis to 3/4 mile.
** When ALS inop, increase CAT C RVR to 50 and vis to 1 mile, CAT DE RVR to 60 and vis to 1 1/4 miles.

ALSF-2
MISSED APPROACH: Climb to 900, then climbing right turn to 4000 via BTG VORTAC R-160 to MULES and hold.

| | | | | |
|--|--|--|--------------------------------------|---|
| ATIS ARR 128.35 269.9 DEP 120.625 239.25 | PORTLAND APP CON 124.35 299.2 | PORTLAND TOWER 118.7 257.8 Rwy 10L-28R 123.775 251.125 Rwy 3-21, 10R-28L | GND CON 121.9 348.6 | CLNC DEL 120.125 318.1 |
|--|--|--|--------------------------------------|---|



| CATEGORY | C | D | E |
|------------------|-------------------------|------------------------|-------------------------|
| S-ILS 10R * | 224/18 | 200 (200-3/4) | 224/24 200 (200-1/2) |
| S-LOC/DME 10R ** | 380/24 356 (400-1/2) | 380/40 | 356 (400-3/4) |
| CIRCLING | 740-2 710 (800-2) | 1020-3 990 (1000-3) | 1060-3 1030 (1100-3) |

NW-1, 19 NOV 2009 to 17 DEC 2009

NW-1, 19 NOV 2009 to 17 DEC 2009