

TACAN CBU Chan 29	APCH CRS 106°	Rwy Idg 11,000 TDZE 24 Arpt Elev 30
----------------------	------------------	---

JAL-330 [USAF]

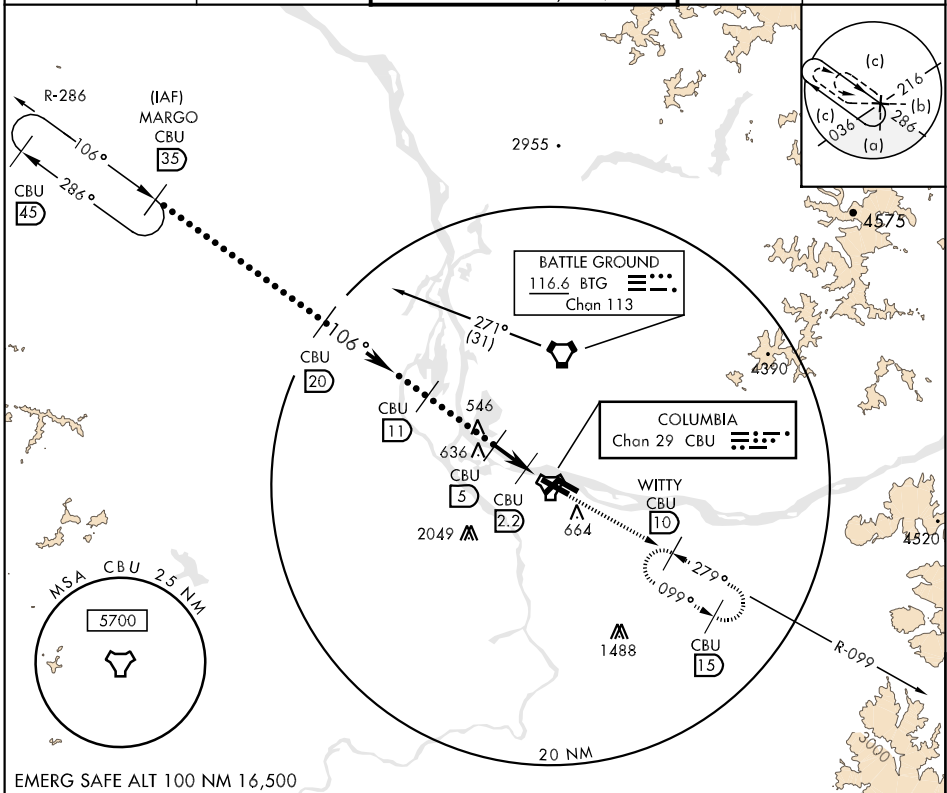
PORTLAND INTL (KPDX)

\* When ALS inop, increase CAT C RVR to 50 and vis to 1 mile.
 

 ALSF-2 

 MISSED APPROACH: Climb to 4000 via CBU TACAN R-099 to WITTY/CBU 10 DME and hold.

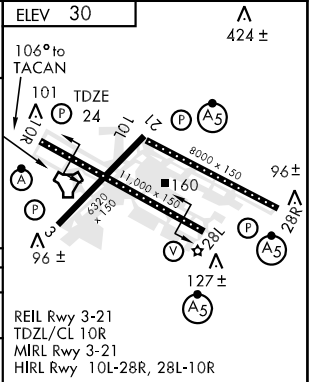
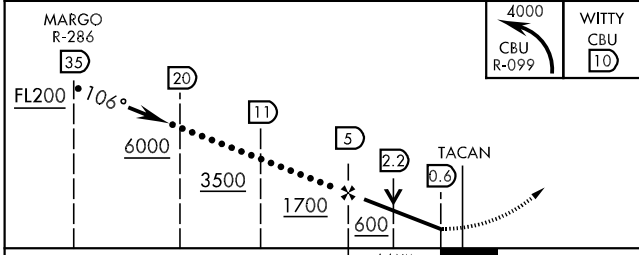
ATIS ARR 128.35 269.9 DEP 120.625 239.25	PORTLAND APP CON 124.35 299.2	PORTLAND TOWER 118.7 257.8 Rwy 10L-28R 123.775 251.125 Rwy 3-21, 10R-28L	GND CON 121.9 348.6	CLNC DEL 120.125 318.1
--	----------------------------------	--	------------------------	---------------------------



NW-1, 11 MAR 2010 to 08 APR 2010

NW-1, 11 MAR 2010 to 08 APR 2010

EMERG SAFE ALT 100 NM 16,500



CATEGORY	C	D	E
S-10R *	380/24 356 (400-1/2)	380/50 356 (400-1)	
CIRCLING	740-2 710 (800-2)	1020-3 990 (1000-3)	1060-3 1030 (1100-3)