

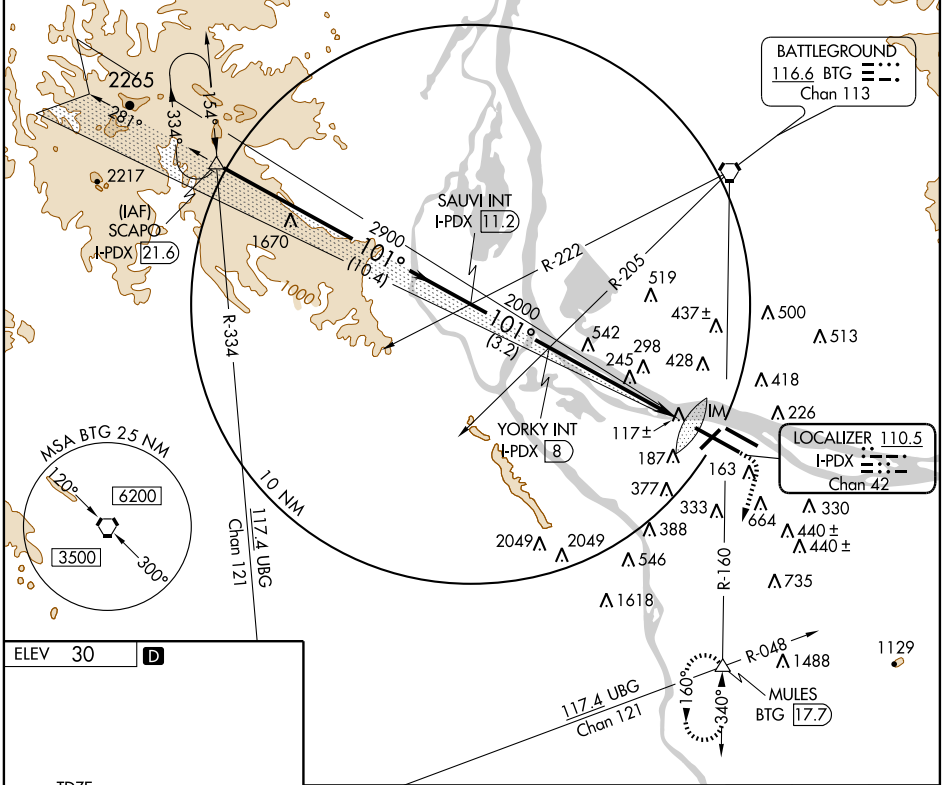
ILS RWY 10R (CAT II)

PORTLAND INTL (PDX)

LOC/DME I-PDX 110.5 Chan 42	APP CRS 101°	Rwy Idg 11000 TDZE 24 Apt Elev 30
--	------------------------	--

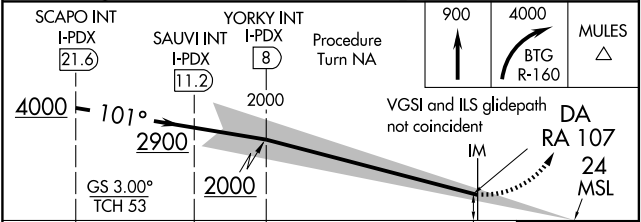
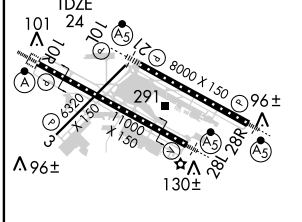
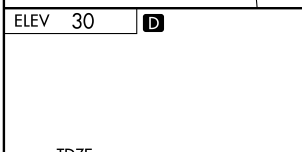
▽ ▲ When control tower reports construction equipment is operating within the area, Cat II and III minimums not authorized.	ALSF-2 	MISSED APPROACH: Climb to 900, then climbing right turn to 4000 via BTG R-160 to MULES Int/BTG VORTAC 17.7 DME and hold.
---	------------	--

ATIS 128.35 269.9	PORTLAND APP CON* 124.35 299.2	PORTLAND TOWER Rwy 10L-28R Rwys 3-21, 10R-28L 118.7 257.8 123.775 251.125	GND CON 121.9 348.6	CLNC DEL 120.125 318.1
-----------------------------	--	--	-------------------------------	----------------------------------



NW-1, 19 NOV 2009 to 17 DEC 2009

NW-1, 19 NOV 2009 to 17 DEC 2009



CATEGORY	A	B	C	D
S-ILS 10R		124/12	100 RA 107	

CATEGORY II ILS - SPECIAL AIRCREW & AIRCRAFT CERTIFICATION REQUIRED

REIL Rwys 3 and 21
TDZ/CL Rwy 10R
MIRL Rwy 3-21
HIRL Rwys 10L-28R and 10R-28L