

PORTLAND, OREGON

AL-330 (FAA)

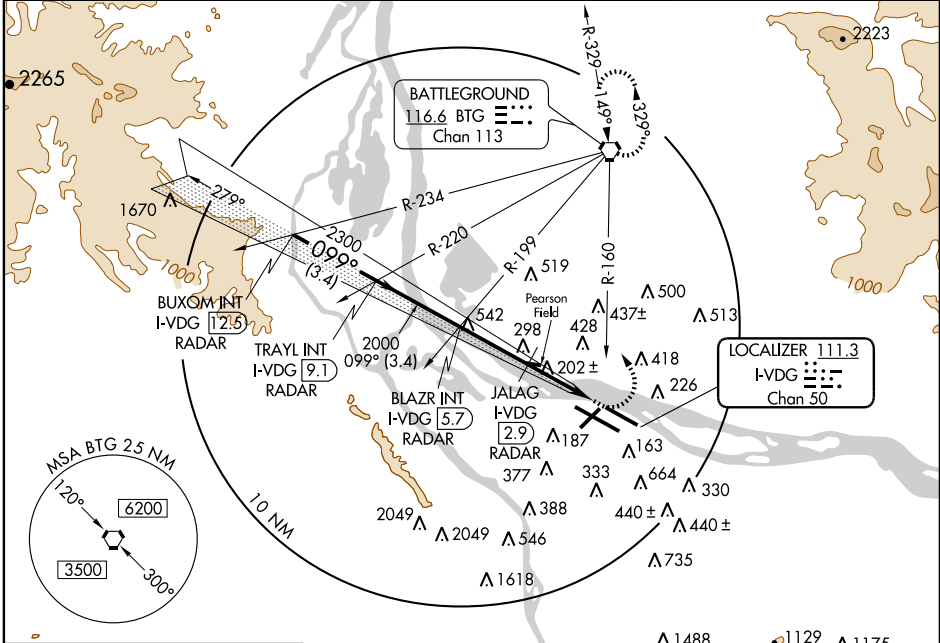
ILS or LOC RWY 10L

PORTLAND INTL (PDX)

LOC/DME I-VDG 111.3 Chan 50	APP CRS 099°	Rwy Idg TDZE Apt Elev	8000 30 30
---	------------------------	-----------------------------	---------------------------------------

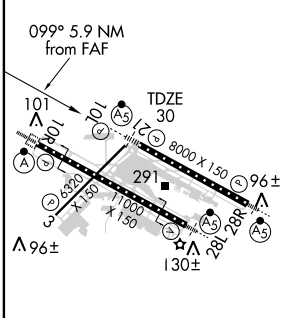
		MALSAR	MISSED APPROACH: Climb to 700, then climbing left turn to 4000 via BTG R-160 to BTG VORTAC and hold.

ATIS 128.35 269.9	PORTLAND APP CON* 124.35 299.2	PORTLAND TOWER Rwy 10L-28R Rwys 3-21, 10R-28L 118.7 257.8 123.775 251.125	GND CON 121.9 348.6	CINC DEL 120.125 318.1
-----------------------------	--	--	-------------------------------	----------------------------------



NW-1, 19 NOV 2009 to 17 DEC 2009

ELEV 30	D
---------	----------



RADAR or DME REQUIRED

BUXOM INT I-VDG (12.5) RADAR	TRAYL INT I-VDG (9.1) RADAR	BLAZR INT I-VDG (5.7) RADAR	JALAG I-VDG (2.9) RADAR	I-VDG (1.3)	I-VDG (0.2)	700	4000	BTG
						BTG R-160	116.6	
CATEGORY	A	B	C	D				
S-ILS 10L	293/24		263 (300-½)					
S-LOC 10L	480/24	450 (500-½)	480/50	450 (500-1)	480/60	450 (500-1½)		
CIRCLING	720-1	740-1	740-2	1020-3				
	690 (700-1)	710 (800-1)	710 (800-2)	990 (1000-3)				

PORTLAND, OREGON
Amdt 2A 09295

45°35'N-122°36'W

PORTLAND INTL (PDX) ILS or LOC RWY 10L