

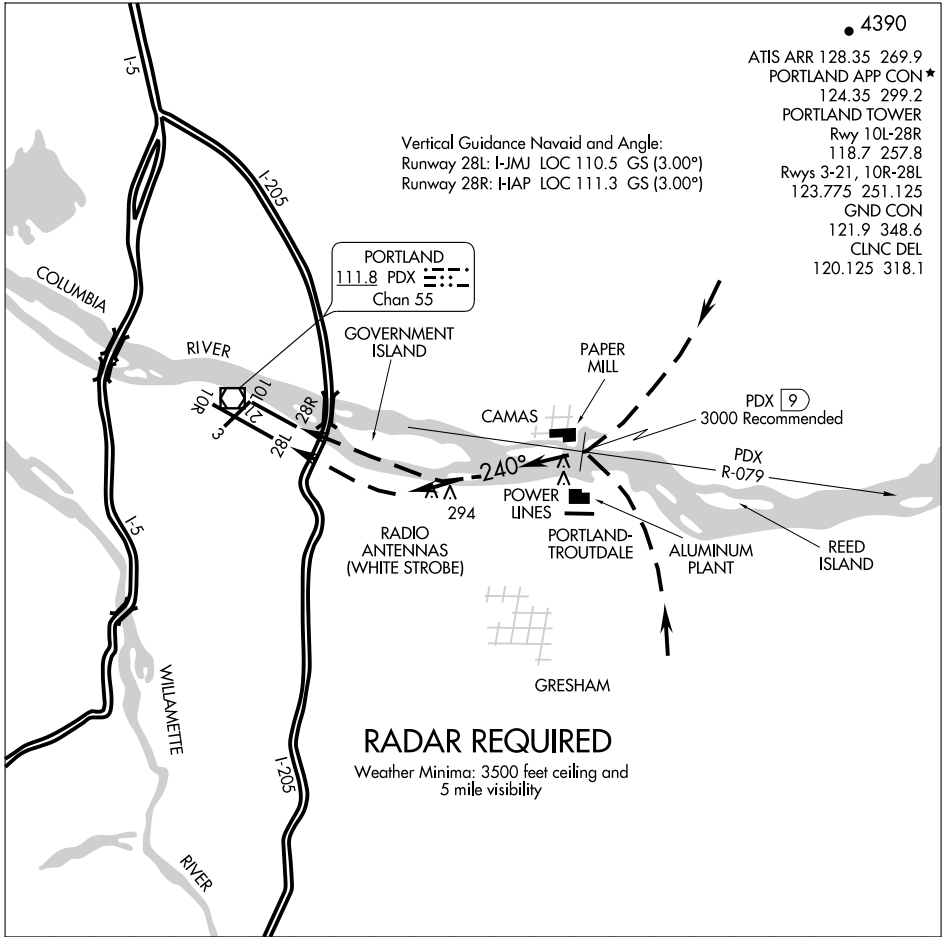
MILL VISUAL RWY 28L/R

AL-330 (FAA)

PORTLAND INTL (PDX)
PORTLAND, OREGON

NW-1, 19 NOV 2009 to 17 DEC 2009

NW-1, 19 NOV 2009 to 17 DEC 2009



- 4390
- ATIS ARR 128.35 269.9
- PORTLAND APP CON★
- 124.35 299.2
- PORTLAND TOWER
- Rwy 10L-28R
- 118.7 257.8
- Rwys 3-21, 10R-28L
- 123.775 251.125
- GND CON
- 121.9 348.6
- CLNC DEL
- 120.125 318.1

Vertical Guidance Navaid and Angle:
 Runway 28L: I-JMJ LOC 110.5 GS (3.00°)
 Runway 28R: HAP LOC 111.3 GS (3.00°)

PORTLAND
 111.8 PDX Chan 55

GOVERNMENT ISLAND

PAPER MILL

CAMAS

PDX 3000 Recommended

RADIO ANTENNAS (WHITE STROBE)
 294

POWER LINES

PORTLAND-TROUTDALE

ALUMINUM PLANT

REED ISLAND

GRESHAM

RADAR REQUIRED

Weather Minima: 3500 feet ceiling and 5 mile visibility

1 2 3 4 5 6 7 8 9 10 11 12 13 14 15 16 17 18 19 20 21 22

23

When visual approaches to Runways 28L/R are in progress, clearances to aircraft will be issued utilizing the following phraseology: "(IDENT) CLEARED FOR MILL VISUAL RUNWAY 28 LEFT/RIGHT APPROACH."

MILL VISUAL RWY 28L/R

45°35'N-122°36'W

PORTLAND, OREGON
PORTLAND INTL (PDX)