

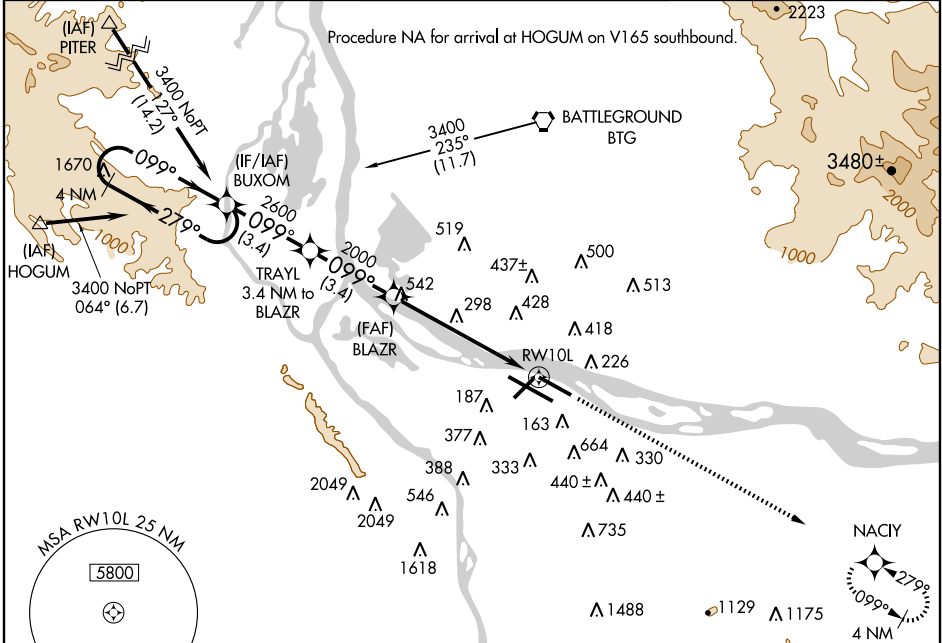
RNAV (GPS) RWY 10L

PORTLAND INTL (PDX)

WAAS CH 81804 W10B	APP CRS 099°	Rwy Idg TDZE Apt Elev	8000 30 30
--	------------------------	-----------------------------	---------------------------------------

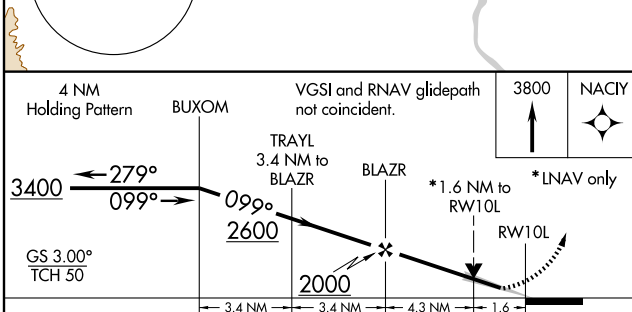
<p>▼ DME/DME RNP-0.3 NA. ▲ For uncompensated Baro-VNAV systems, LNAV/VNAV NA below -15°C (5°F) or above 49°C (120°F).</p>	<p>MALSR</p>	<p>MISSED APPROACH: Climb to 3800 direct NACIY WP and hold.</p>
--	--------------	---

<p>ATIS 128.35 269.9</p>	<p>PORTLAND APP CON* 124.35 299.2</p>	<p>PORTLAND TOWER Rwy 10L-28R Rwys 3-21, 10R-28L 118.7 257.8 123.775 251.125</p>	<p>GND CON 121.9 348.6</p>	<p>CLNC DEL 120.125 318.1</p>
-------------------------------------	--	---	---------------------------------------	--

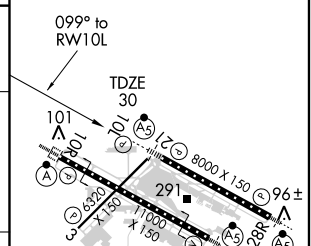


NW-1, 19 NOV 2009 to 17 DEC 2009

NW-1, 19 NOV 2009 to 17 DEC 2009



ELEV 30	D
---------	----------



CATEGORY	A	B	C	D
LPV DA	330/24 300 (300-½)			
LNAV/VNAV DA	800-2¼ 770 (800-2¼)		800-2½ 770 (800-2½)	
LNAV MDA	580/24 550 (600-½)	580/50 550 (600-1)	580/60 550 (600-1¼)	
CIRCLING	720-1 690 (700-1)	740-1 710 (800-1)	740-2 710 (800-2)	1020-3 990 (1000-3)

REIL Rwys 3 and 21
 TDZ/CL Rwy 10R
 MIRL Rwy 3-21
 HIRL Rwys 10L-28R and 10R-28L