

PORTLAND, OREGON

AL-330 (FAA)

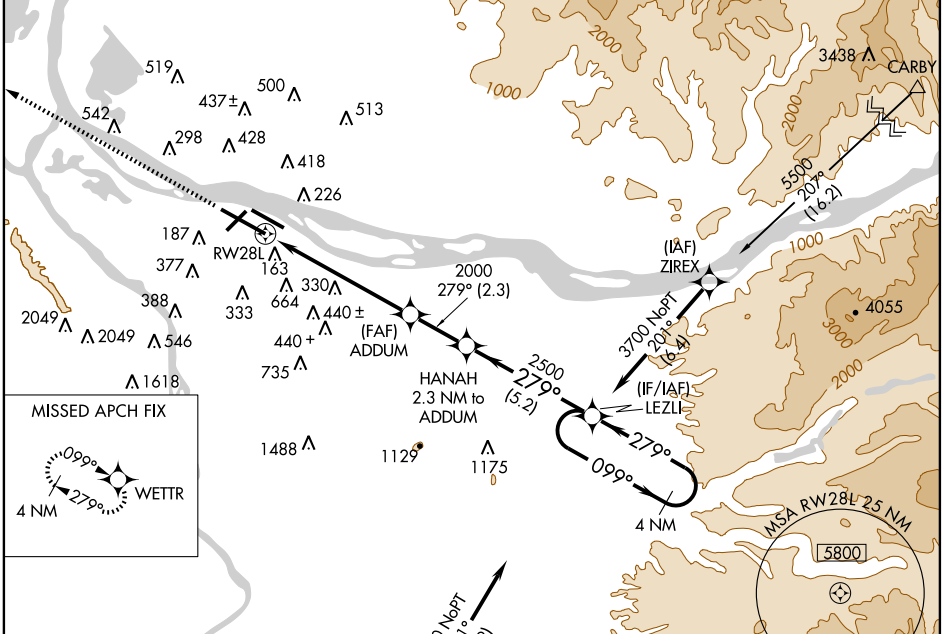
# RNAV (GPS) RWY 28L

PORTLAND INTL (PDX)

WAAS CH <b>56205</b> <b>W28B</b>	APP CRS <b>279°</b>	Rwy Idg <b>11000</b> TDZE <b>23</b> Apt Elev <b>30</b>
--	------------------------	--

		MISSED APPROACH: Climb to 3800 direct WETTR and hold.

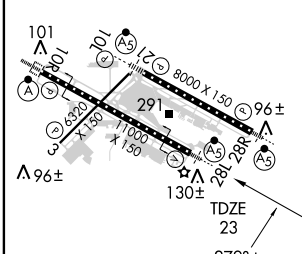
ATIS <b>128.35 269.9</b>	PORTLAND APP CON* <b>124.35 299.2</b>	PORTLAND TOWER Rwys 10L-28R <b>118.7 257.8</b> Rwys 3-21, 10R-28L <b>123.775 251.125</b>	GND CON <b>121.9 348.6</b>	CLNC DEL <b>120.125 318.1</b>
-----------------------------	--	--	-------------------------------	----------------------------------



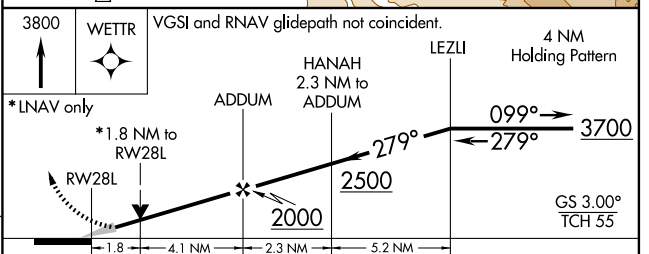
NW-1, 19 NOV 2009 to 17 DEC 2009

NW-1, 19 NOV 2009 to 17 DEC 2009

ELEV 30	<b>D</b>
---------	----------



REIL Rwys 3 and 21 TDZ/CL Rwy 10R MIRL Rwy 3-21 HIRL Rwys 10L-28R and 10R-28L
--



CATEGORY	A	B	C	D
LPV DA	340/24 317 (400-½)			
LNAV MDA	660/24	637 (700-½)	660/60 637 (700-1¼)	660-1½ 637 (700-1½)
CIRCLING	720-1½ 690 (700-1½)	740-1½ 710 (800-1½)	740-2 710 (800-2)	1020-3 990 (1000-3)

PORTLAND, OREGON  
Orig-A 09295

45°35'N-122°36'W

# RNAV (GPS) RWY 28L

PORTLAND INTL (PDX)