


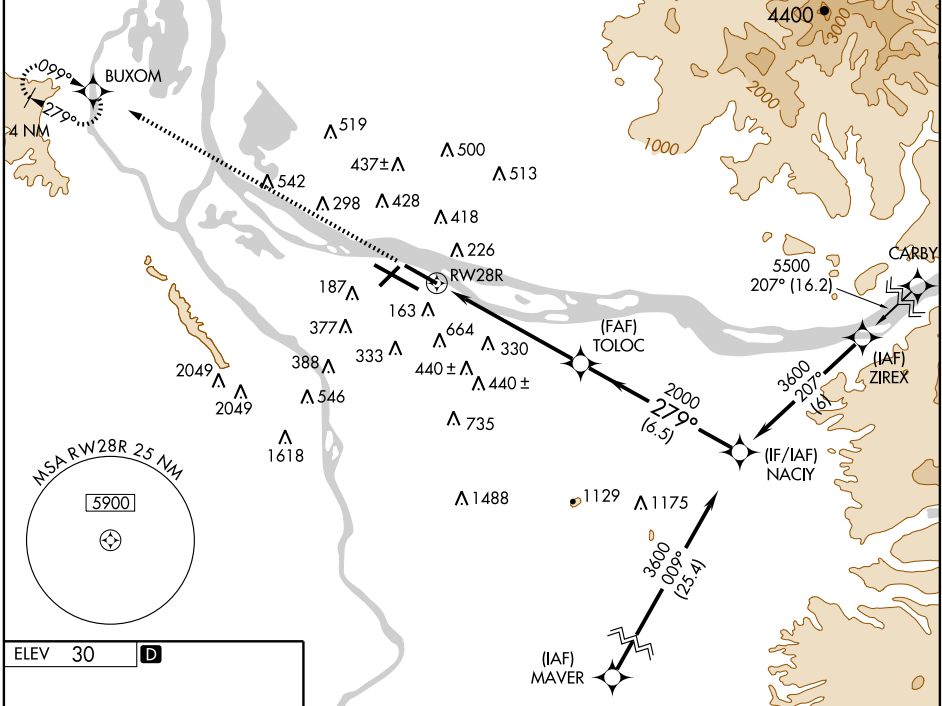
RNAV (GPS) RWY 28R

PORTLAND INTL (PDX)

WAAS CH 60905 W28A	APP CRS 279°	Rwy Idg TDZE Apt Elev	8000 30 30
--	------------------------	-----------------------------	---------------------------------------

<p>▼ DME/DME RNP-0.3 NA. Baro-VNAV NA below -16°C (4°F). ▲ For inoperative MALSRS increase LNAV Cat A and B visibility to RVR 5000. For inoperative MALSRS increase LPV visibility to RVR 5000 all Cats.</p>	<p>MALSRS </p>	<p>MISSED APPROACH: Climb to 3400 direct BUXOM and hold.</p>
--	--	--

<p>ATIS 128.35 269.9</p>	<p>PORTLAND APP CON * 124.35 299.2</p>	<p>PORTLAND TOWER Rwy 10L-28R Rwys 3-21, 10R-28L 118.7 257.8 123.775 251.125</p>	<p>GND CON 121.9 348.6</p>	<p>CLNC DEL 120.125 318.1</p>
-------------------------------------	---	---	---------------------------------------	--



NW-1, 11 MAR 2010 to 08 APR 2010

