

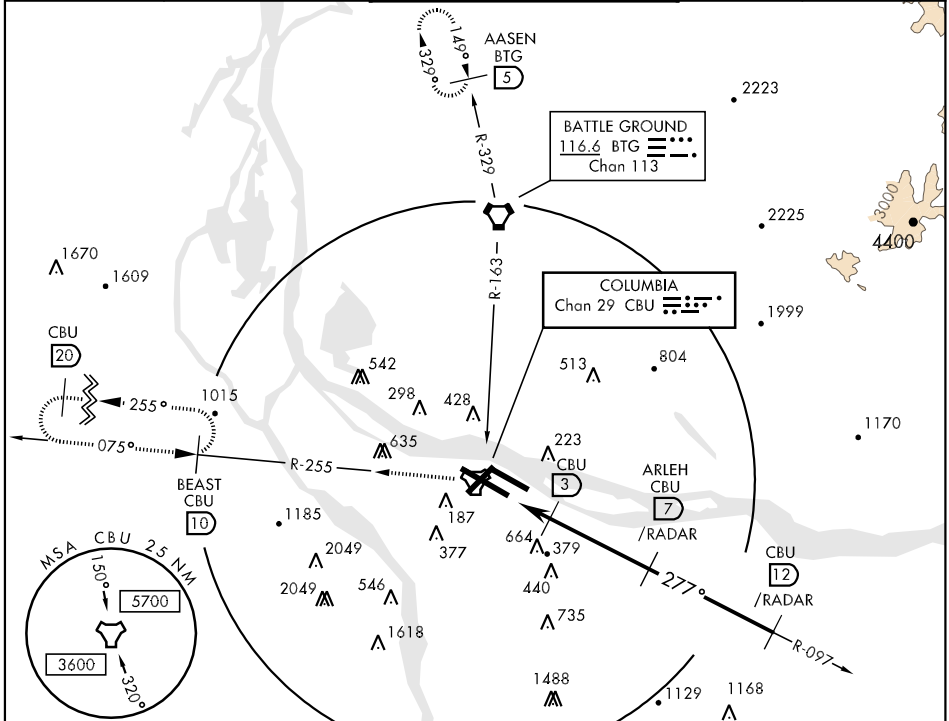
TACAN CBU Chan 29	APCH CRS 277°	Rwy Idg 11,000 TDZE 23 Arpt Elev 30
----------------------	------------------	---

AL-330 [USAF]

PORTLAND INTL (KPDJ)

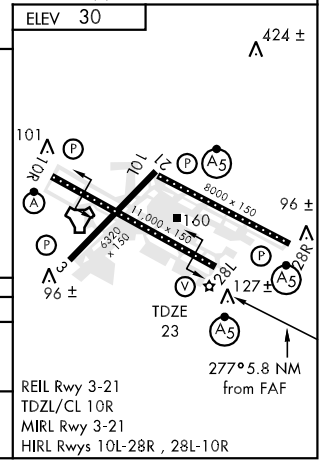
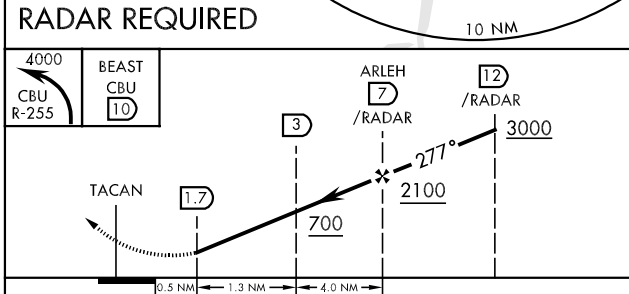
ARR 128.35	ATIS 120.625	DEP 269.9	PORTLAND APP CON 100°279° 118.1 284.6 280°099° 124.35 299.2	PORTLAND TOWER		GND CON 121.9 348.6	CLNC DEL 120.125 318.1
				118.7 257.8	Rwy 10L-28R		

MISSED APPROACH: Climbing left turn to 4000 via CBU R-255 to BEAST INT/CBU 10 DME and hold, or when directed by ATC climb to 4000 via BTG R-163 to BTG VORTAC then via BTG R-329 to AASEN INT and hold.			
---	--	--	--



NW-1, 19 NOV 2009 to 17 DEC 2009

NW-1, 19 NOV 2009 to 17 DEC 2009



CATEGORY	A	B	C	D	E
S-28L	600/50 577 (600-1)		600-1½ 577 (600-1½)	600-1¾ 577 (600-1¾)	600-2 577 (600-2)
CIRCLING	720-1 690 (700-1)		740-2 710 (800-2)	980-3 950 (1000-3)	1060-3 1030 (1100-3)