

PORTLAND, OREGON

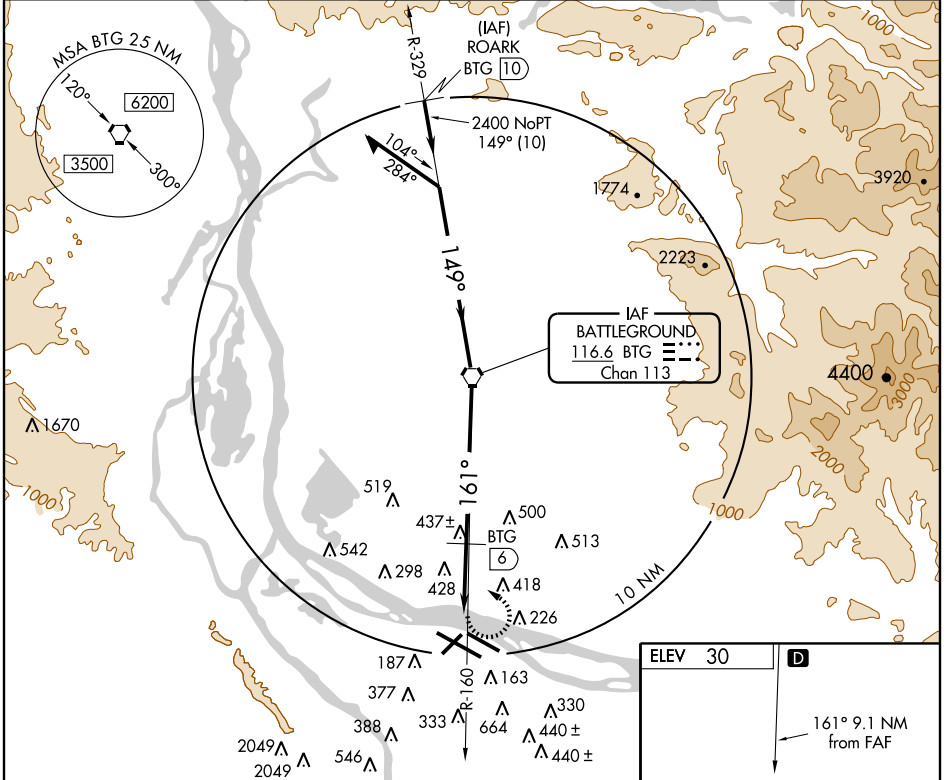
AL-330 (FAA)

VOR-A
PORTLAND INTL (PDX)

VORTAC BTG	APP CRS	Rwy Idg	N/A
116.6	161°	TDZE	N/A
Chan 113		Apt Elev	30

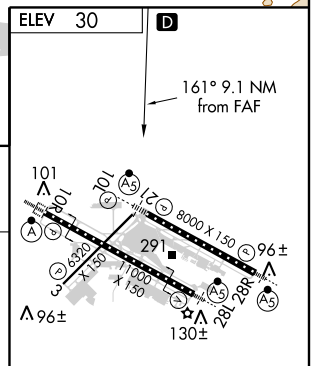
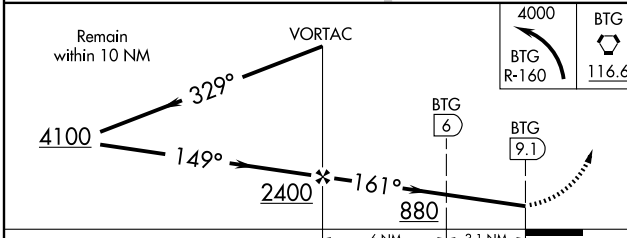
MISSED APPROACH: Climbing left turn to 4000 via BTG R-160 to BTG VORTAC.

ATIS 128.35 269.9	PORTLAND APP CON * 124.35 299.2	PORTLAND TOWER Rwy 10L-28R 118.7 257.8	Rwys 3-21, 10R-28L 123.775 251.125	GND CON 121.9 348.6	CLNC DEL 120.125 318.1
-----------------------------	---	---	--	-------------------------------	----------------------------------



NW-1, 19 NOV 2009 to 17 DEC 2009

NW-1, 19 NOV 2009 to 17 DEC 2009



CATEGORY	A	B	C	D		
CIRCLING	880-1 850 (900-1)	880-1¼ 850 (900-1¼)	880-2½ 850 (900-2½)	1020-3 990 (1000-3)		
DME MINIMA						
CIRCLING	740-1 710 (800-1)		740-2 710 (800-2)	1020-3 990 (1000-3)		
FAF to MAP 9.1 NM						
	Knots	60	90	120	150	180
	Min:Sec	9:06	6:04	4:33	3:38	3:02

REIL Rwys 3 and 21
TDZ/CL Rwy 10R
MIRL Rwy 3-21
HIRL Rwys 10L-28R and 10R-28L

PORTLAND, OREGON
Amdt 9C 09295

45°35'N-122°36'W

PORTLAND INTL (PDX)
VOR-A