

# RNAV (GPS) RWY 10L

PORTLAND INTL (PDX)

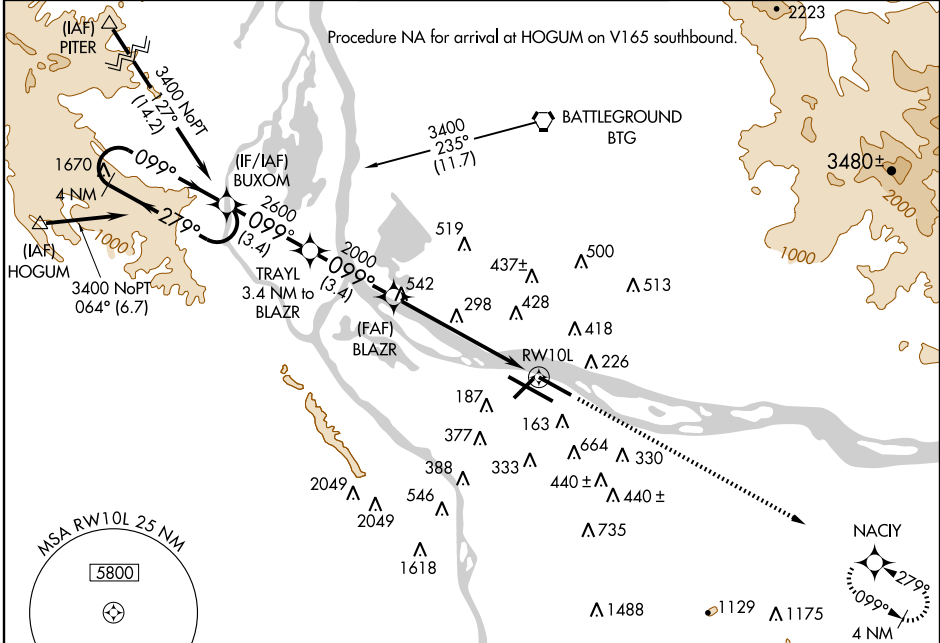
WAAS CH <b>81804</b> <b>W10B</b>	APP CRS <b>099°</b>	Rwy Idg TDZE Apt Elev	<b>8000</b> <b>30</b> <b>30</b>
--	------------------------	-----------------------------	---------------------------------------

**▼** DME/DME RNP-0.3 NA.  
**▲** For uncompensated Baro-VNAV systems, LNAV/VNAV NA below -15°C (5°F) or above 49°C (120°F).



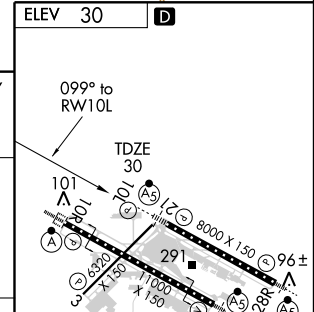
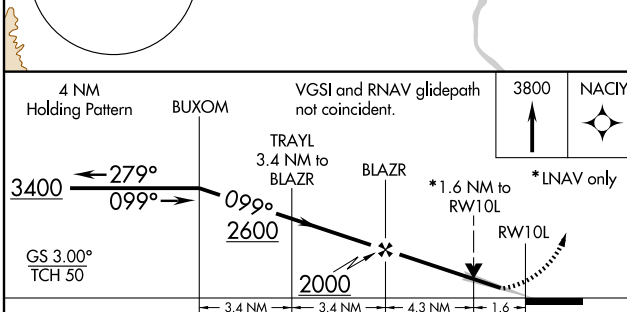
**MISSED APPROACH:** Climb to 3800 direct NACIY WP and hold.

ATIS <b>128.35 269.9</b>	PORTLAND APP CON* <b>124.35 299.2</b>	PORTLAND TOWER Rwy 10L-28R Rwys 3-21, 10R-28L <b>118.7 257.8 123.775 251.125</b>	GND CON <b>121.9 348.6</b>	CLNC DEL <b>120.125 318.1</b>
-----------------------------	--	--	-------------------------------	----------------------------------



NW-1, 11 MAR 2010 to 08 APR 2010

NW-1, 11 MAR 2010 to 08 APR 2010



CATEGORY	A	B	C	D
LPV DA	330/24 300 (300-½)			
LNAV/VNAV DA	800-2¼ 770 (800-2¼)		800-2½ 770 (800-2½)	
LNAV MDA	580/24 550 (600-½)	580/50 550 (600-1)	580/60 550 (600-1¼)	
CIRCLING	720-1 690 (700-1)	740-1 710 (800-1)	740-2 710 (800-2)	1020-3 990 (1000-3)

REIL Rwys 3 and 21  
 TDZ/CL Rwy 10R  
 MIRL Rwy 3-21  
 HIRL Rwys 10L-28R and 10R-28L