

# GPS RWY 17

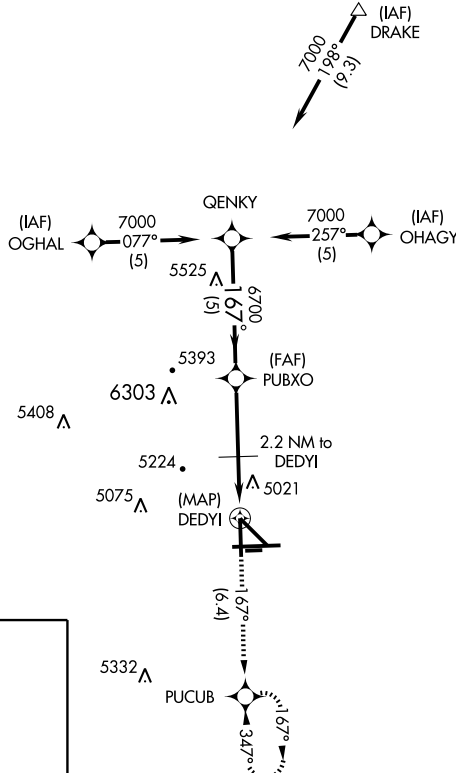
PUEBLO MEMORIAL (PUB)

APP CRS <b>167°</b>	Rwy Idg <b>8308</b>
	TDZE <b>4726</b>
	Apt Elev <b>4726</b>

**▽**  
**▲** NA

MISSED APPROACH: Climb to 7500 via 167° course to PUCUB WP and hold.

ATIS ★ <b>125.25</b>	DENVER APP CON ★ <b>120.1 290.5</b>	PUEBLO TOWER ★ <b>119.1 (CTAF) 0 257.8</b>	GND CON <b>121.9</b>	CLNC DEL <b>120.9</b>	UNICOM <b>122.95</b>
-------------------------	--	---	-------------------------	--------------------------	-------------------------



SW-1, 11 MAR 2010 to 08 APR 2010

SW-1, 11 MAR 2010 to 08 APR 2010

ELEV 4726 **D**

MIRL Rwy 17-35 **Ⓛ**  
HIRL Rwy 8L-26R **Ⓛ**  
REIL Rwy 35  
REIL Rwy 17 and 26R **Ⓛ**

VGSI and descent angles not coincident.

Procedure Turn NA	7000	6700	5620	7500	PUCUB
	5 NM	2.8 NM	2.2 NM	167°	
CATEGORY	A	B	C	D	
S-17	5280-1	554 (600-1)	5280-1½ 554 (600-1½)	5280-1¾ 554 (600-1¾)	
CIRCLING	5340-1	614 (700-1)	5340-1¾ 614 (700-1¾)	5380-2 654 (700-2)	