

RNAV (GPS) RWY 8L

PUEBLO MEMORIAL (PUB)

| | | | |
|--|------------------------|-----------------------------|--|
| WAAS CH 61011 W08A | APP CRS 077° | Rwy Idg TDZE Apt Elev | 10496 4668 4726 |
|--|------------------------|-----------------------------|--|

▼ For uncompensated Baro-VNAV systems, LNAV/VNAV NA below -24°C (-11°F) or above 40°C (104°F). DME/DME RNP -0.3 NA. When local altimeter setting not received, use La Junta altimeter setting and increase all DA/MDA 200 feet and increase visibilities: LPV all Cats ½ mile, LNAV/VNAV all Cats ¾ mile, LNAV Cats C and D ¾ mile, and Circling Cat B ¼ mile and Cats C and D ¾ mile. When using La Junta altimeter setting, for inoperative MALSRS increase LPV all Cats visibility ½ mile. Baro-VNAV and VDP NA when using La Junta altimeter setting.

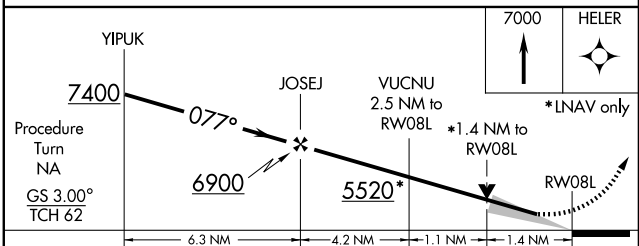
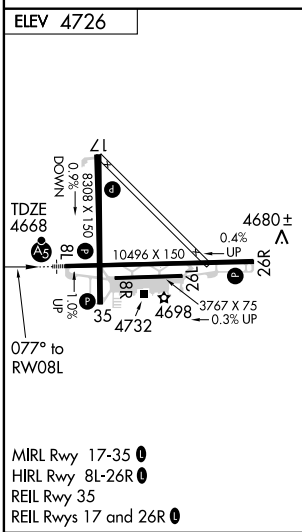
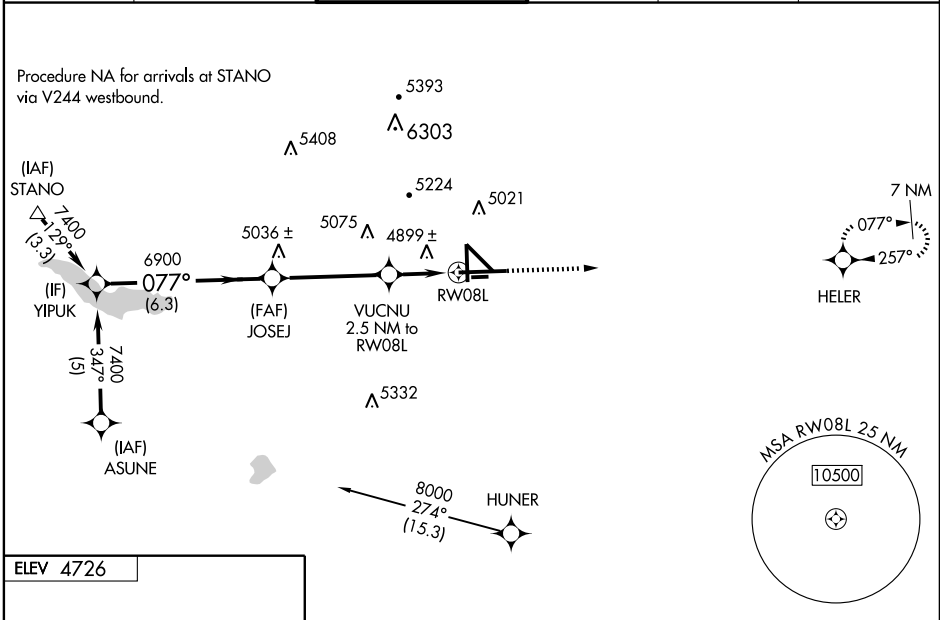
MALSRS

MISSED APPROACH:
Climb to 7000 direct
HELER and hold.

| | | | | | |
|-------------------------|--|--|-------------------------|--------------------------|-------------------------|
| ATIS * 125.25 | DENVER APP CON * 120.1 290.5 | PUEBLO TOWER * 119.1 (CTAF) 0 257.8 | GND CON 121.9 | CLNC DEL 120.9 | UNICOM 122.95 |
|-------------------------|--|--|-------------------------|--------------------------|-------------------------|

SW-1, 19 NOV 2009 to 17 DEC 2009

SW-1, 19 NOV 2009 to 17 DEC 2009



| CATEGORY | A | B | C | D |
|---------------|--------------------|-------------|-------------------------|-----------------------|
| LPV DA | 4918-½ | | 250 (300-½) | |
| LNAV/ VNAV DA | 5227-1½ | | 559 (600-1½) | |
| LNAV MDA | 5160-½ | 492 (500-½) | 5160-¾ 492 (500-¾) | 5160-1 492 (500-1) |
| CIRCLING | 5340-1 614 (700-1) | | 5340-1¾ 614 (700-1¾) | 5380-2 654 (700-2) |