


WAAS CH 93705	APP CRS 160°	Rwy ldg TDZE Apt Elev	7100 18 18
W16A			

RNAV (GPS) RWY 16

NORTH KINGSTOWN / QUONSET STATE (OQU)

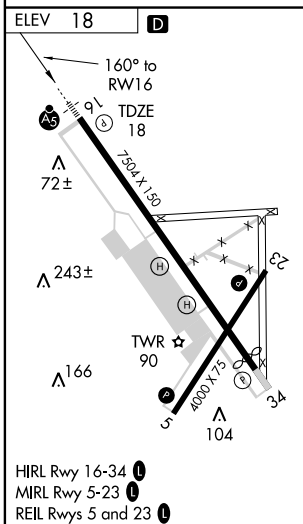
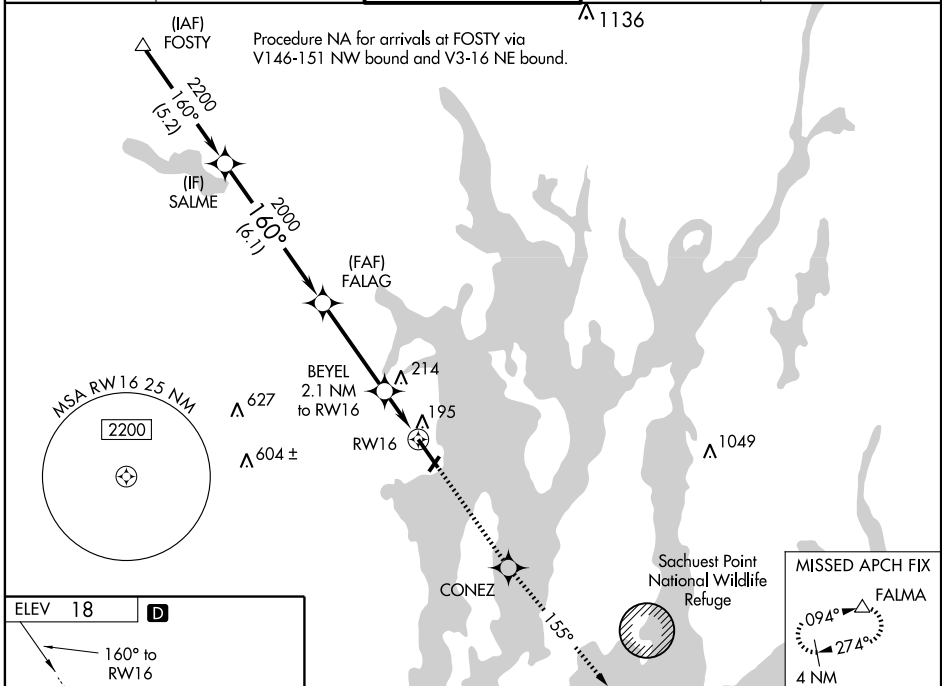
⚠ For inoperative MALSR, increase LNAV Cat A and B visibility to 1 mile. Baro-VNAV NA when using Providence altimeter setting. For uncompensated Baro-VNAV systems, LNAV/VNAV NA below -15°C (5°F) or above 49°C (120°F). DME/DME RNP-0.3 NA. VDP NA when using Providence altimeter setting. When local altimeter setting not received, use Providence altimeter setting and increase LPV DA to 343 feet, increase LNAV/VNAV DA to 468 feet; increase all MDAs 40 feet. Visibility reduction by helicopters NA.

MALSR



MISSED APPROACH: Climb to 3000 direct CONEZ and via 155° track to FALMA and hold.

ATIS * 118.6	PROVIDENCE APP CON * 135.4 244.875	QUONSET TOWER * 126.35 (CTAF) 0 252.9	GND CON 134.5 275.8	UNICOM 122.95
------------------------	--	---	-------------------------------	-------------------------



Procedure Turn NA	SALME	3000	CONEZ	155° track	FALMA
		↑	✧	↖	△
	2200				
	GS 3.00° TCH 50				
CATEGORY	A	B	C	D	
LPV DA		320-¾ 302 (400-¾)			
LNAV/VNAV DA		445-1 427 (500-1)			
LNAV MDA	560-¾ 542 (600-¾)	560-1 542 (600-1)	560-1½ 542 (600-1½)	560-1¼ 542 (600-1¼)	
CIRCLING	600-1 582 (600-1)	600-1½ 582 (600-1½)	600-2 582 (600-2)	600-2 582 (600-2)	

NE-1, 11 MAR 2010 to 08 APR 2010

NE-1, 11 MAR 2010 to 08 APR 2010