

RNAV (GPS) RWY 33

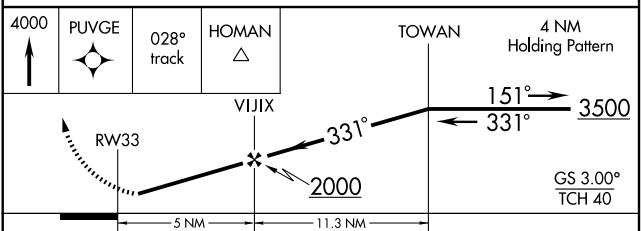
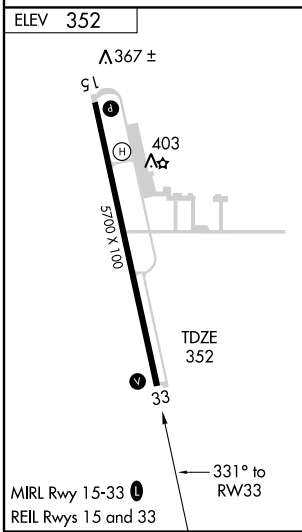
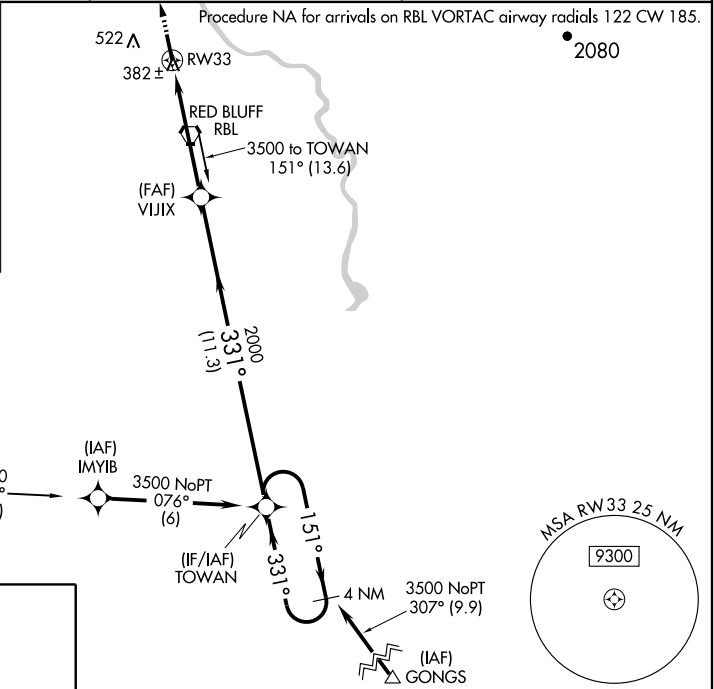
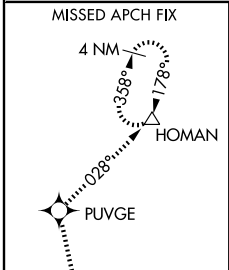
RED BLUFF MUNI (RBL)

WAAS CH 42609 W33A	APP CRS 331°	Rwy Idg TDZE 352 Apt Elev 352
--	------------------------	---

⚠ Baro-VNAV NA when using Redding altimeter setting.
 For uncompensated Baro-VNAV systems, LNAV/VNAV NA below -15°C (5°F) or above 48°C (118°F).
 DME/DME RNP- 0.3 NA. Visibility reduction by helicopters NA.
 When local altimeter setting not received, use Redding altimeter setting and increase all DA/MDA 80 feet and increase visibilities LPV ¼ mile all Cats, LNAV/VNAV ¼ mile all Cats, and LNAV Cat C visibility ¼ mile.

MISSED APPROACH: Climb to 4000 direct PUVGE and via 028° track to HOMAN and hold.

ASOS 120.775	OAKLAND CENTER 132.2 350.3	UNICOM 123.0 (CTAF) ①
------------------------	--------------------------------------	--



CATEGORY	A	B	C	D
LPV DA		602-1	250 (300-1)	
LNAV/VNAV DA		718-1¼	366 (400-1¼)	
LNAV MDA	780-1	428 (500-1)	780-1¼ 428 (500-1¼)	780-1½ 428 (500-1½)
CIRCLING	840-1	488 (500-1)	840-1½ 488 (500-1½)	920-2 568 (600-2)

SW-2, 11 MAR 2010 to 08 APR 2010

SW-2, 11 MAR 2010 to 08 APR 2010