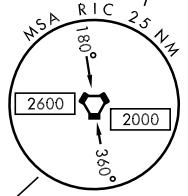
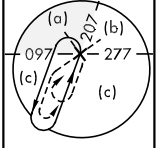
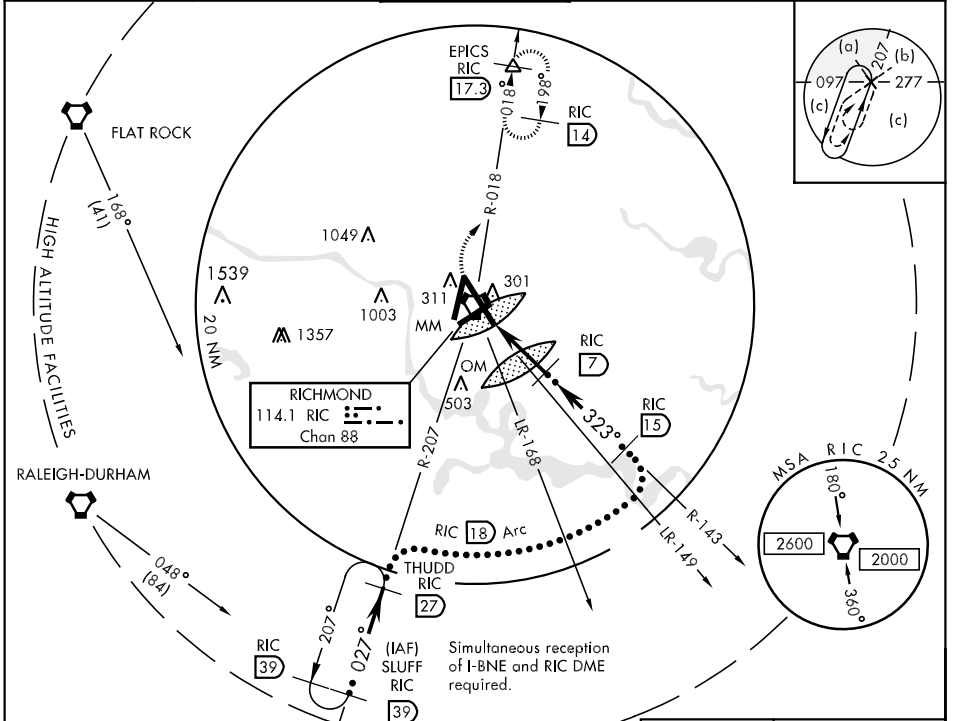


TACAN RIC Chan 88	APCH CRS 323°	Rwy Idg 9003 TDZE 161 Arpt Elev 167	JAL-347 [USAF]	RICHMOND INTL (KRIC)
----------------------	------------------	----------------------------------------------------	----------------	----------------------

ALSIF-2
 MISSED APPROACH: Climb straight ahead to 600, climbing right turn to 2000 via RIC R-018 to EPICS INT and hold.

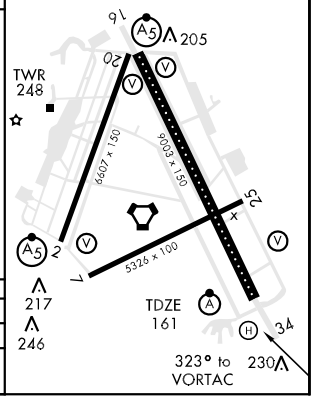
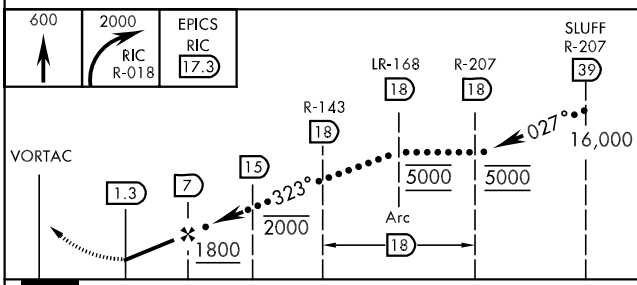
ATIS ★ 119.15 263.025	POTOMAC APP CON 134.7 307.2	RICHMOND TOWER 121.1 257.8	GND CON 121.9 348.6	CLNC DEL 127.55 348.6
--------------------------	--------------------------------	-------------------------------	------------------------	--------------------------



NE-3, 19 NOV 2009 to 17 DEC 2009

NE-3, 19 NOV 2009 to 17 DEC 2009

EMERG SAFE ALT 100 NM 6100
 ELEV 167 TDZL/CL Rwy 34
 REIL Rwy 2, 20, and 25
 HILL all Rwys



CATEGORY	C	D	E
S-34	500/40 339 (400-34)	500/50 339	(400-1)
CIRCLING	640-1½ 473 (500-1½)	720-2 553 (600-2)	740-2 573 (600-2)