

# ILS RWY 2

RICHMOND INTL (RIC)

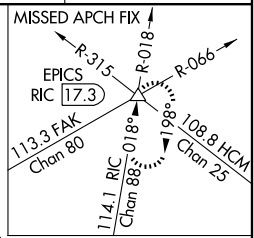
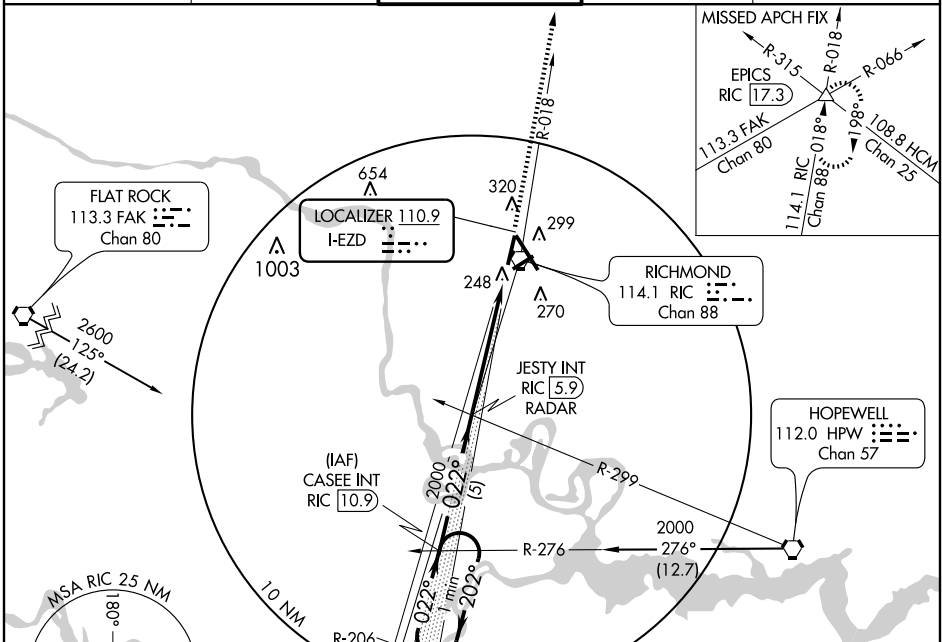
LOC I-EZD <b>110.9</b>	APP CRS <b>022°</b>	Rwy Idg TDZE Apt Elev	<b>6607</b> <b>161</b> <b>167</b>
---------------------------	------------------------	-----------------------------	---

**▼** Inoperative table does not apply to S-ILS 2. For inoperative MALSR, increase S-LOC 2 Cat. A and B visibility to 1.



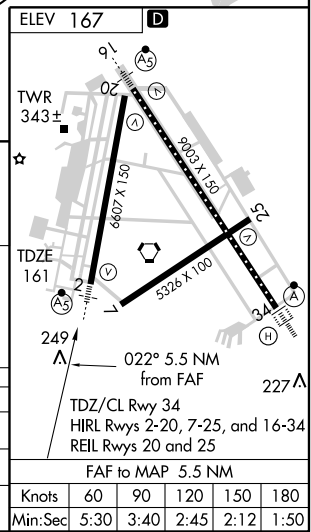
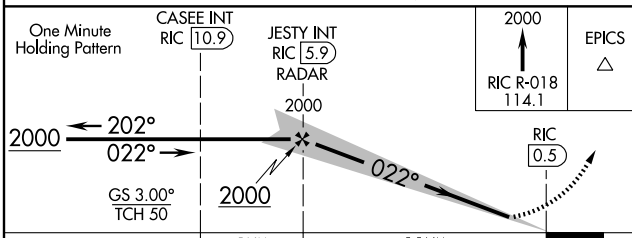
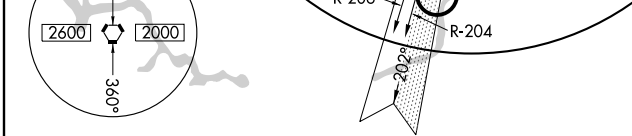
**MISSED APPROACH:** Climb to 2000 via RIC R-018 to EPICS INT/RIC 17.3 DME and hold.

ATIS <b>119.15 263.025</b>	POTOMAC APP CON <b>134.7 307.2</b>	RICHMOND TOWER <b>121.1 257.8</b>	GND CON <b>121.9 348.6</b>	CLNC DEL <b>127.55 348.6</b>
-------------------------------	---------------------------------------	--------------------------------------	-------------------------------	---------------------------------



NE-3, 19 NOV 2009 to 17 DEC 2009

NE-3, 19 NOV 2009 to 17 DEC 2009



CATEGORY	A	B	C	D
S-ILS 2		411- <sup>3</sup> / <sub>4</sub> 250 (300- <sup>3</sup> / <sub>4</sub> )		
S-LOC 2		580- <sup>3</sup> / <sub>4</sub> 419 (500- <sup>3</sup> / <sub>4</sub> )		
CIRCLING	660-1 493 (500-1)		660-1 <sup>1</sup> / <sub>2</sub> 493 (500-1 <sup>1</sup> / <sub>2</sub> )	720-2 553 (600-2)

Knots	60	90	120	150	180
Min:Sec	5:30	3:40	2:45	2:12	1:50