

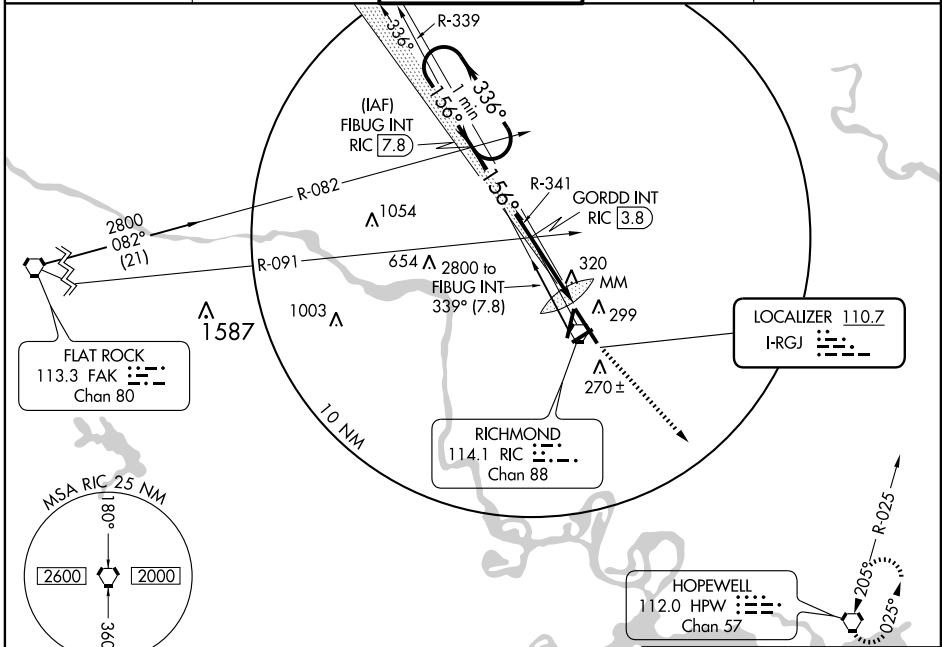
ILS or LOC RWY 16

RICHMOND INTL (RIC)

LOC I-RGJ	APP CRS	Rwy Idg	9003
110.7	156°	TDZE	167
		Apt Elev	167

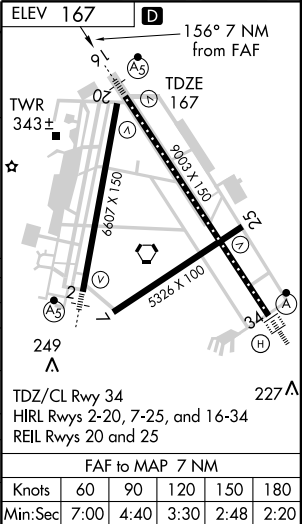
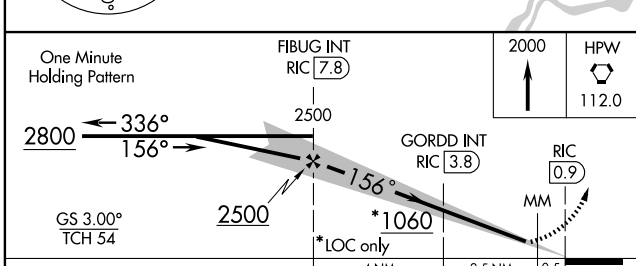
<p>▼ DME from RIC VORTAC.</p> <p>▲ **RVR 1800 authorized with the use of FD or AP or HUD to DA.</p>	<p>MALS</p>	<p>MISSED APPROACH: Climb to 2000 direct HPW VORTAC and hold.</p>
---	--------------------	---

ATIS	POTOMAC APP CON	RICHMOND TOWER	GND CON	CLNC DEL
119.15 263.025	134.7 307.2	121.1 257.8	121.9 348.6	127.55 348.6



NE-3, 19 NOV 2009 to 17 DEC 2009

NE-3, 19 NOV 2009 to 17 DEC 2009



CATEGORY	A	B	C	D
S-ILS 16	**367/24 200 (200-½)			
S-LOC 16	1060/40	893 (900-¾)	1060-2¼ 893 (900-2¼)	1060-2½ 893 (900-2½)
CIRCLING	1060-1¼	893 (900-1¼)	1060-2¾ 893 (900-2¾)	1060-3 893 (900-3)
GORDD FIX MINIMUMS				
S-LOC 16	580/24	413 (500-½)	580/40	413 (500-¾)
CIRCLING	660-1	493 (500-1)	660-1½ 493 (500-1½)	720-2 553 (600-2)

FAF to MAP 7 NM					
Knots	60	90	120	150	180
Min:Sec	7:00	4:40	3:30	2:48	2:20