

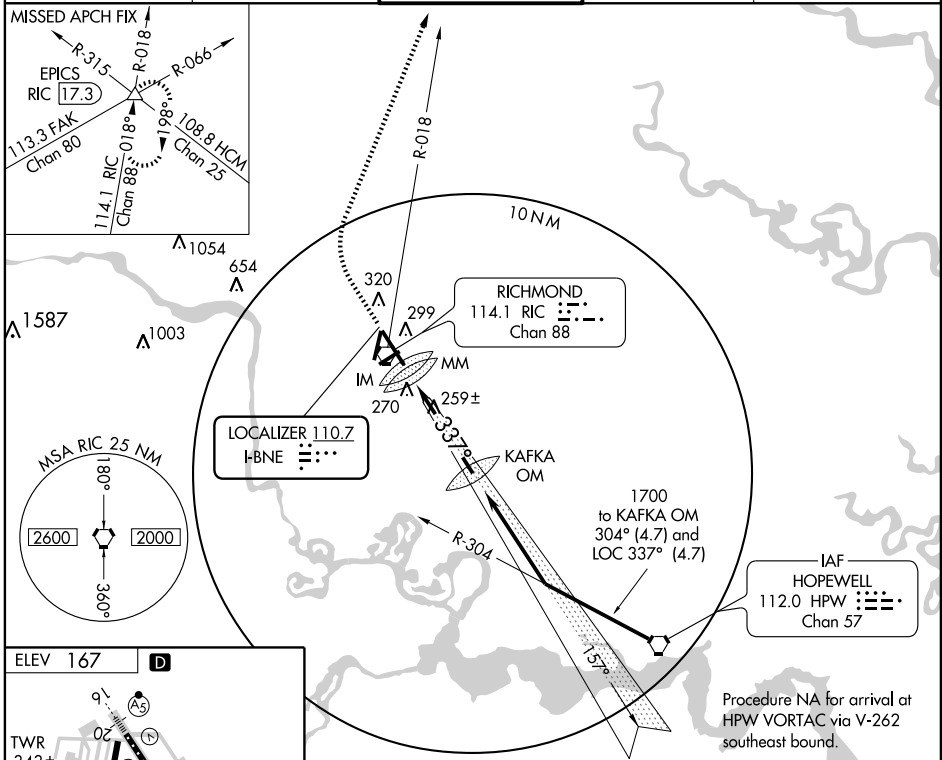
ILS or LOC RWY 34

RICHMOND INTL (RIC)

LOC I-BNE 110.7	APP CRS 337°	Rwy Idg 9003
		TDZE 161
		Apt Elev 167

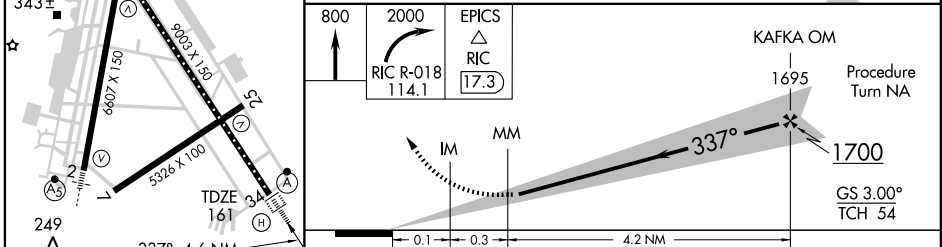
ALSIF-2 MISSED APPROACH: Climb to 800 then climbing right turn to 2000 via RIC VORTAC R-018 to EPICS INT/RIC 17.3 DME and hold.

ATIS 119.15 263.025	POTOMAC APP CON 134.7 307.2	RICHMOND TOWER 121.1 257.8	GND CON 121.9 348.6	CLNC DEL 127.55 348.6
-------------------------------	---------------------------------------	---	-------------------------------	---------------------------------



NE-3, 19 NOV 2009 to 17 DEC 2009

NE-3, 19 NOV 2009 to 17 DEC 2009



CATEGORY	A	B	C	D	E
S-ILS 34	361/18 200 (200-½)				361/24 200 (200-½)
S-LOC 34	520/24 359 (400-½)			520/40	359 (400-¾)
CIRCLING	660-1 493 (500-1)		660-1½ 493 (500-1½)	720-2 553 (600-2)	740-2 573 (600-2)

TDZ/CL Rwy 34					
HIRL Rws 2-20, 7-25, and 16-34					
REL Rws 20 and 25					
FAF to MAP 4.6 NM					
Knots	60	90	120	150	180
Min:Sec	4:36	3:04	2:18	1:50	1:32