


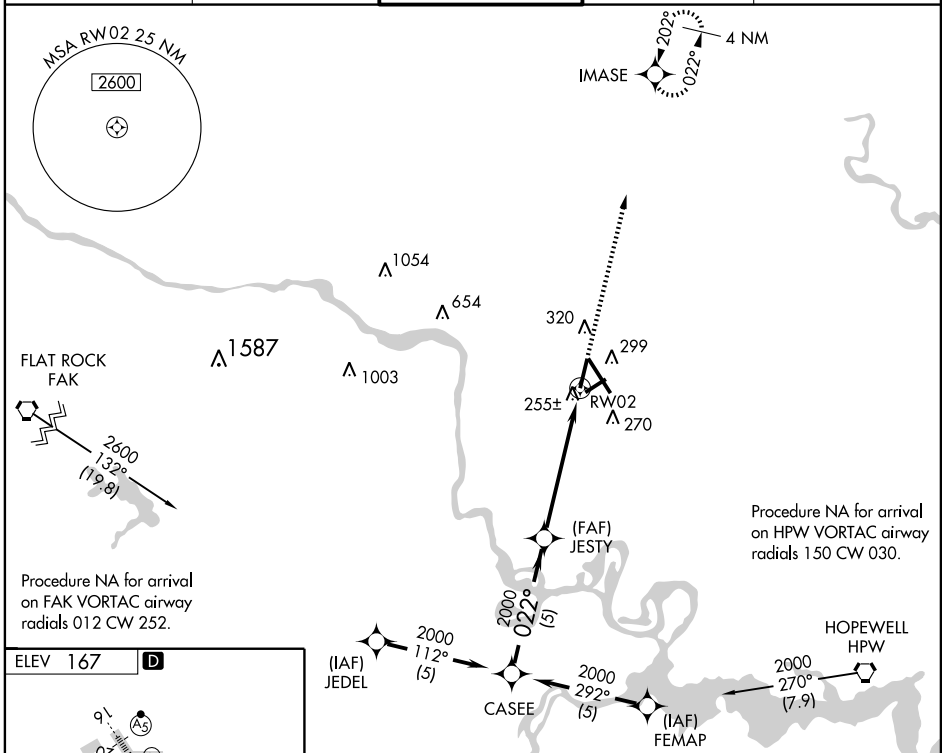
# RNAV (GPS) RWY 2

RICHMOND INTL (RIC)

APP CRS	Rwy Idg	<b>6607</b>
<b>022°</b>	TDZE	<b>161</b>
	Apt Elev	<b>167</b>

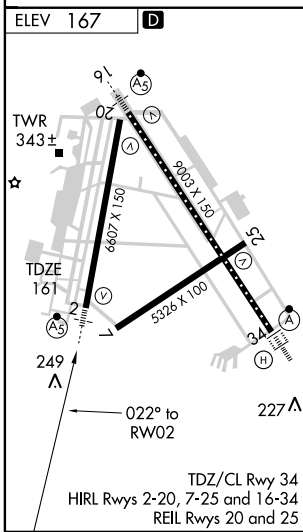
<p><b>▽</b> For inoperative MALSR, increase LNAV Cats A and B visibility to 1. Baro-VNAV NA below -15°C (5°F).  <b>△ NA</b> GPS or RNP-0.3 required. DME/DME RNP-0.3 NA.</p>	<p><b>MALSR</b></p> 	<p><b>MISSED APPROACH:</b> Climb to 2000 direct IMASE WP and hold.</p>
--	---	--

<p>ATIS <b>119.15 263.025</b></p>	<p>POTOMAC APP CON <b>134.7 307.2</b></p>	<p>RICHMOND TOWER <b>121.1 257.8</b></p>	<p>GND CON <b>121.9 348.6</b></p>	<p>CLNC DEL <b>127.55 348.6</b></p>
---------------------------------------	---	--	---------------------------------------	---



NE-3, 19 NOV 2009 to 17 DEC 2009

NE-3, 19 NOV 2009 to 17 DEC 2009



<p>Procedure Turn NA</p>	CASEE	JESTY	<p>2000 <math>\uparrow</math> IMASE</p>	
	<p>2000 <math>\rightarrow</math> 022°</p>	<p>2000 <math>\rightarrow</math> 022°</p>	<p>*1.2 NM to RWY 2</p>	
	<p>*LNAV only</p>		<p>RWY 2</p>	
	5 NM	4.4 NM	1.2 NM	
CATEGORY	A	B	C	D
GLS DA	NA			
LNAV/VNAV DA	520-¾		359 (400-¾)	
LNAV MDA	580-¾		419 (500-¾)	
CIRCLING	660-1¼	493 (500-1¼)	660-1½	720-2
			493 (500-1½)	553 (600-2)