

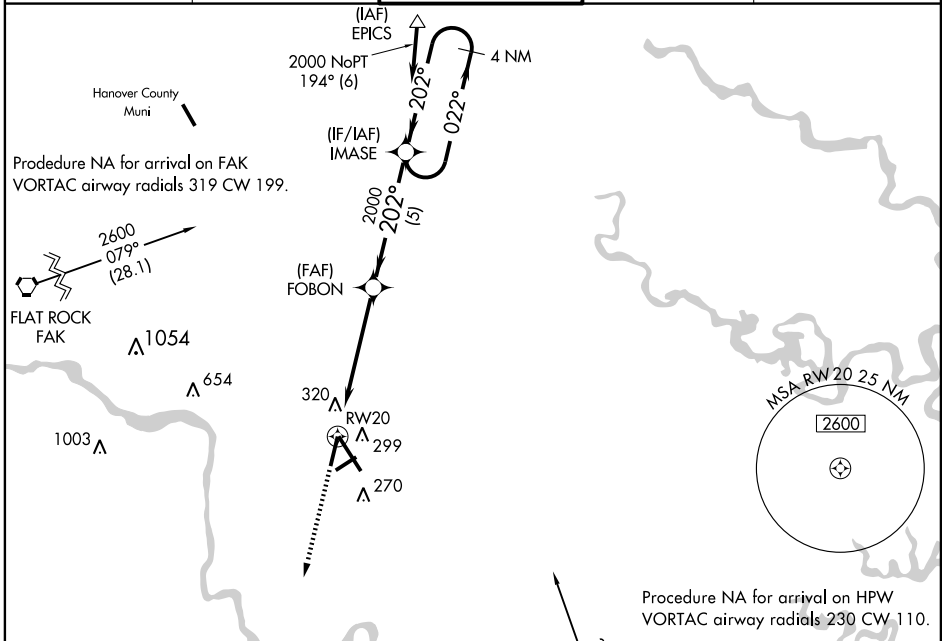
# RNAV (GPS) RWY 20

RICHMOND INTL (RIC)

APP CRS	Rwy Idg	<b>6607</b>
<b>202°</b>	TDZE	<b>167</b>
	Apt Elev	<b>167</b>

<p><b>▽</b> NA</p> <p>GPS or RNP-0.3 required. DME/DME RNP-0.3 NA.</p>	<p>MISSED APPROACH: Climb to 2000 direct CASEE WP and hold.</p>
--	---

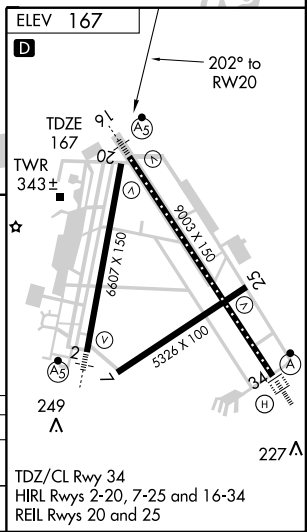
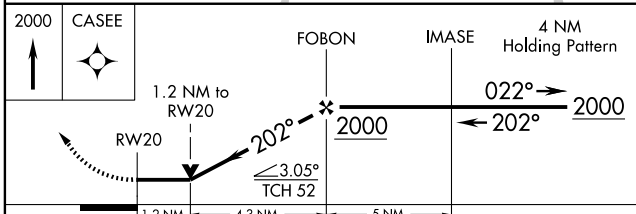
<p>ATIS</p> <p><b>119.15 263.025</b></p>	<p>POTOMAC APP CON</p> <p><b>134.7 307.2</b></p>	<p>RICHMOND TOWER</p> <p><b>121.1 257.8</b></p>	<p>GND CON</p> <p><b>121.9 348.6</b></p>	<p>CLNC DEL</p> <p><b>127.55 348.6</b></p>
--	--	---	--	--



NE-3, 19 NOV 2009 to 17 DEC 2009

NE-3, 19 NOV 2009 to 17 DEC 2009

Procedure NA for arrival on HPW  
VORTAC airway radials 230 CW 110.



CATEGORY	A	B	C	D
RNAV MDA	600-1	433 (500-1)	600-1½ 433 (500-1½)	600-1½ 433 (500-1½)
CIRCLING	660-1	493 (500-1)	660-1½ 493 (500-1½)	720-2 553 (600-2)