

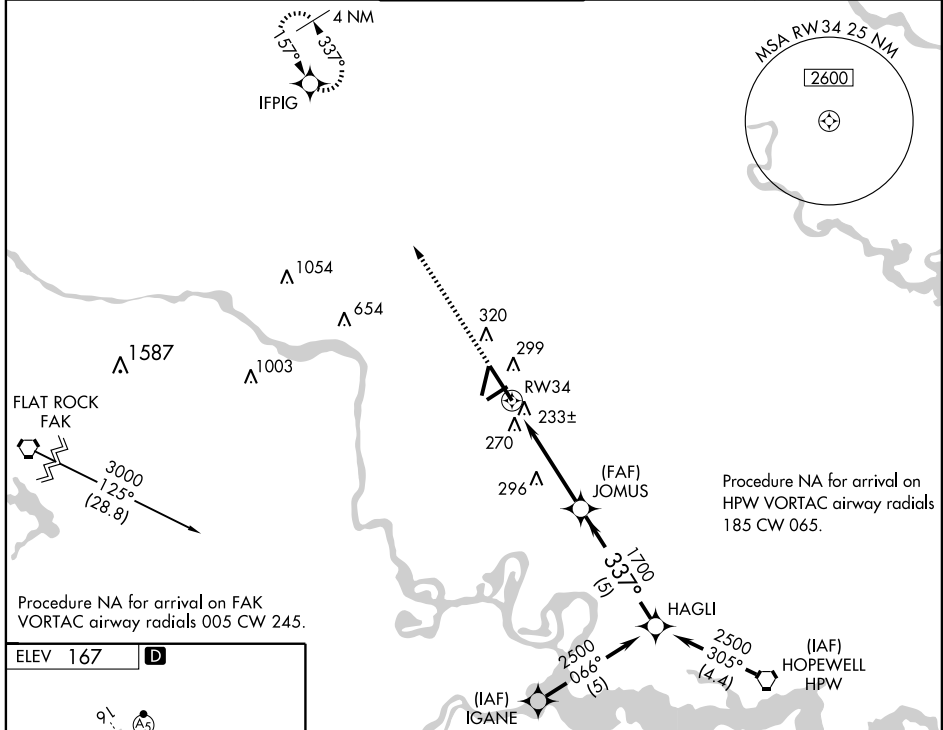
RNAV (GPS) RWY 34

RICHMOND INTL (RIC)

APP CRS 337°	Rwy Idg 9003
	TDZE 161
	Apt Elev 167

<p>▽ For uncompensated Baro-VNAV systems, LNAV/VNAV NA below -15°C (5°F) or above 48°C (118°F). For inoperative ALSF, increase LNAV Cat D visibility to RVR 6000. DME/DME RNP-0.3 NA.</p> <p>△ NA</p>	<p>ALSF-2</p>	<p>MISSED APPROACH: Climb to 2500 direct IFPIG WP and hold.</p>
---	---------------	---

<p>ATIS 119.15 263.025</p>	<p>POTOMAC APP CON 134.7 307.2</p>	<p>RICHMOND TOWER 121.1 257.8</p>	<p>GND CON 121.9 348.6</p>	<p>CLNC DEL 127.55 348.6</p>
---------------------------------------	---	--	---------------------------------------	---

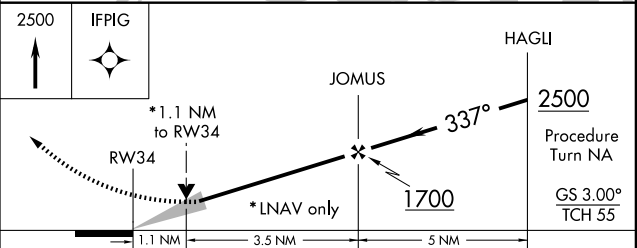
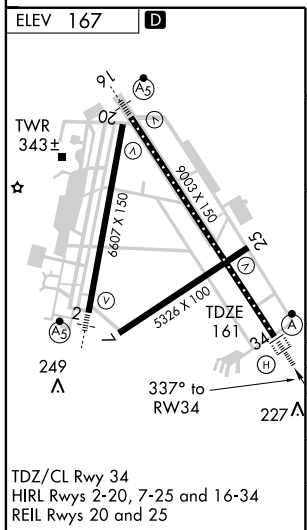


NE-3, 19 NOV 2009 to 17 DEC 2009

NE-3, 19 NOV 2009 to 17 DEC 2009

Procedure NA for arrival on FAK VORTAC airway radials 005 CW 245.

Procedure NA for arrival on HPW VORTAC airway radials 185 CW 065.



CATEGORY	A	B	C	D
GLS DA	NA			
LNAV/VNAV DA	570/50		409 (500-1)	
LNAV MDA	560/24		399 (400-½)	
CIRCLING	660-1		493 (500-1)	
			660-1½	
			493 (500-1½)	
			720-2	
			553 (600-2)	