

RNAV (GPS) RWY 7

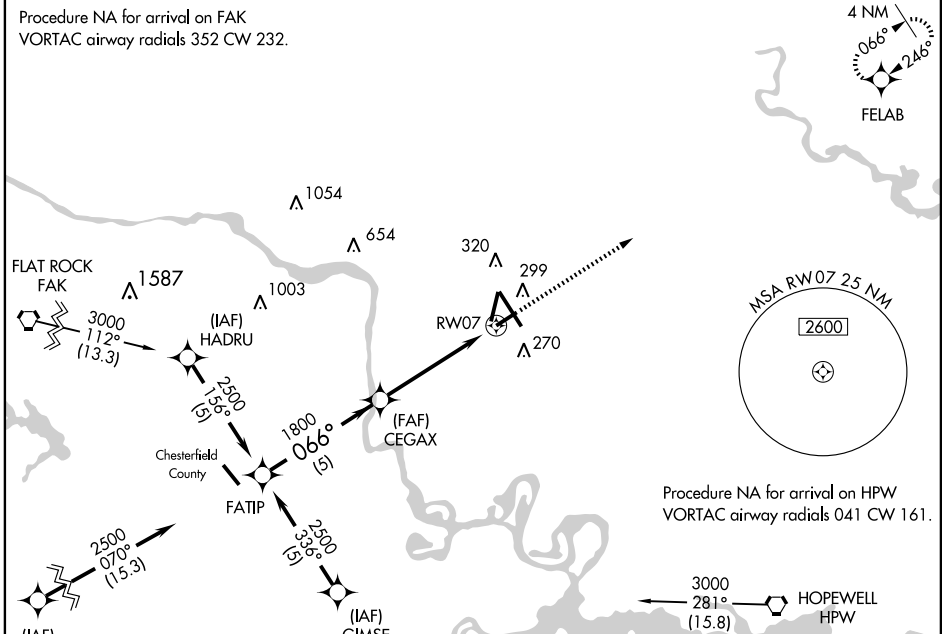
RICHMOND INTL (RIC)

APP CRS	Rwy Idg	5326
066°	TDZE	158
	Apt Elev	167

<p>▼ Straight in minimums NA at night. GPS or RNP-0.3 required. ▲ NA DME/DME RNP-0.3 NA.</p>	<p>MISSED APPROACH: Climb to 3000 direct FELAB WP and hold.</p>
--	---

<p>ATIS 119.15 263.025</p>	<p>POTOMAC APP CON 134.7 307.2</p>	<p>RICHMOND TOWER 121.1 257.8</p>	<p>GND CON 121.9 348.6</p>	<p>CLNC DEL 127.55 348.6</p>
---------------------------------------	---	--	---------------------------------------	---

Procedure NA for arrival on FAK
VORTAC airway radials 352 CW 232.



NE-3, 19 NOV 2009 to 17 DEC 2009

NE-3, 19 NOV 2009 to 17 DEC 2009



	FATIP		CEGAX		RW07	
Procedure Turn NA	2500		1800		3000	
	066°		3.03°		TCH 50	
	5 NM		3.9 NM		1 NM	
CATEGORY	A		B		C	
RNAV MDA	540-1		382 (400-1)		540-1½ 382 (400-1½)	
CIRCLING	660-1		493 (500-1)		660-1½ 493 (500-1½)	
					720-2 553 (600-2)	

