

VOR RWY 2

RICHMOND INTL (RIC)

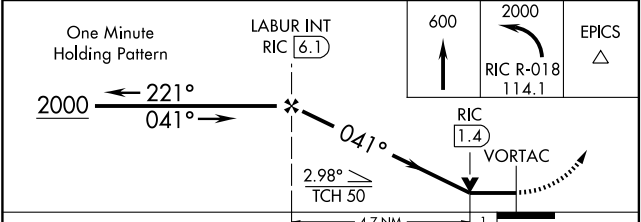
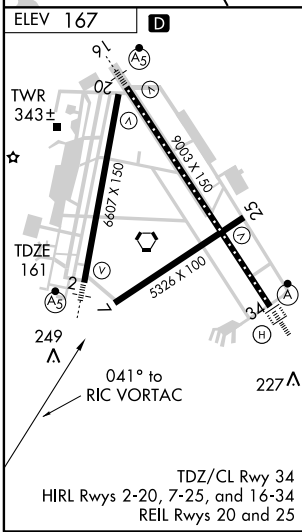
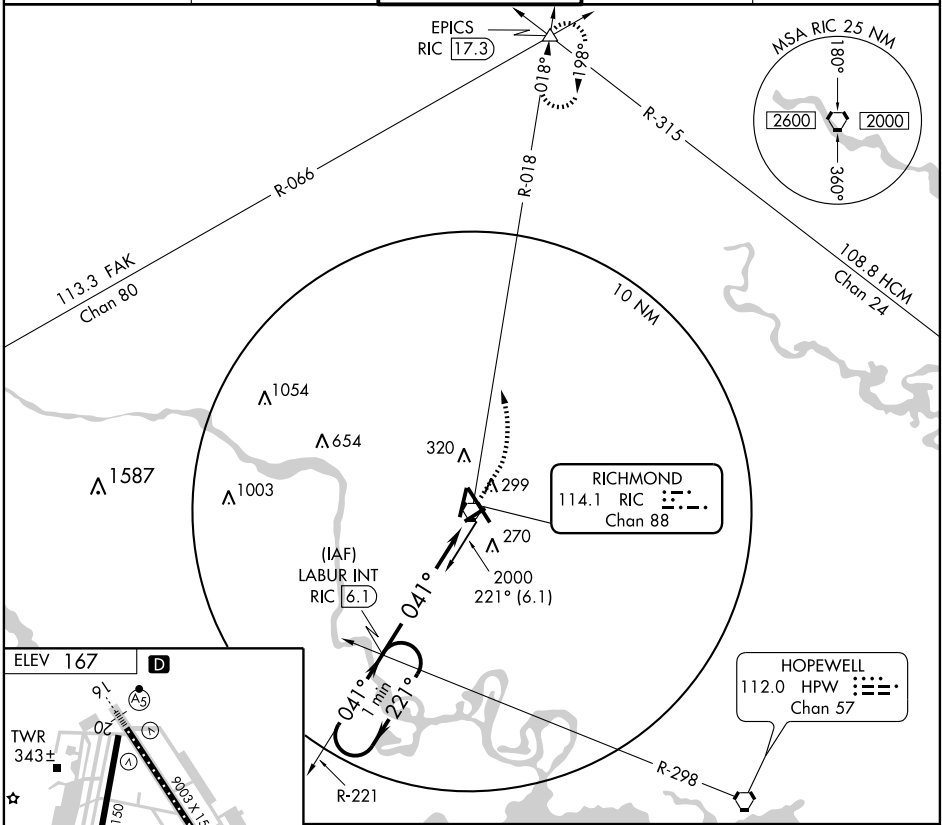
VORTAC RIC 114.1 Chan 88	APP CRS 041°	Rwy Idg TDZE 161 Apt Elev 167	6607
--	------------------------	---	-------------

▼ Inoperative table does not apply.

MALSR

MISSED APPROACH: Climb to 600 then climbing left turn to 2000 via RIC R-018 to EPICS INT and hold.

ATIS 119.15 263.025	POTOMAC APP CON 134.7 307.2	RICHMOND TOWER 121.1 257.8	GND CON 121.9 348.6	CLNC DEL 127.55 348.6
-------------------------------	---------------------------------------	---	-------------------------------	---------------------------------



CATEGORY	A	B	C	D
S-2	540-1	379 (400-1)		540-1¼ 379 (400-1¼)
CIRCLING	660-1	493 (500-1)	660-1½ 493 (500-1½)	720-2 553 (600-2)

NE-3, 19 NOV 2009 to 17 DEC 2009

NE-3, 19 NOV 2009 to 17 DEC 2009