

RICHMOND, VIRGINIA

AL-347 (FAA)

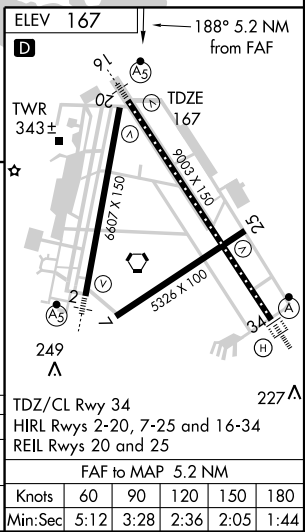
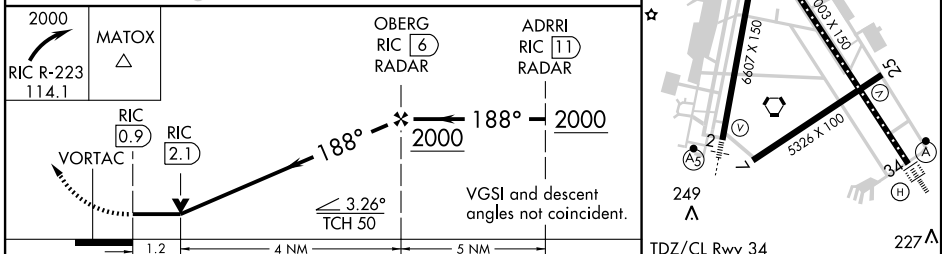
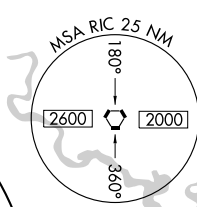
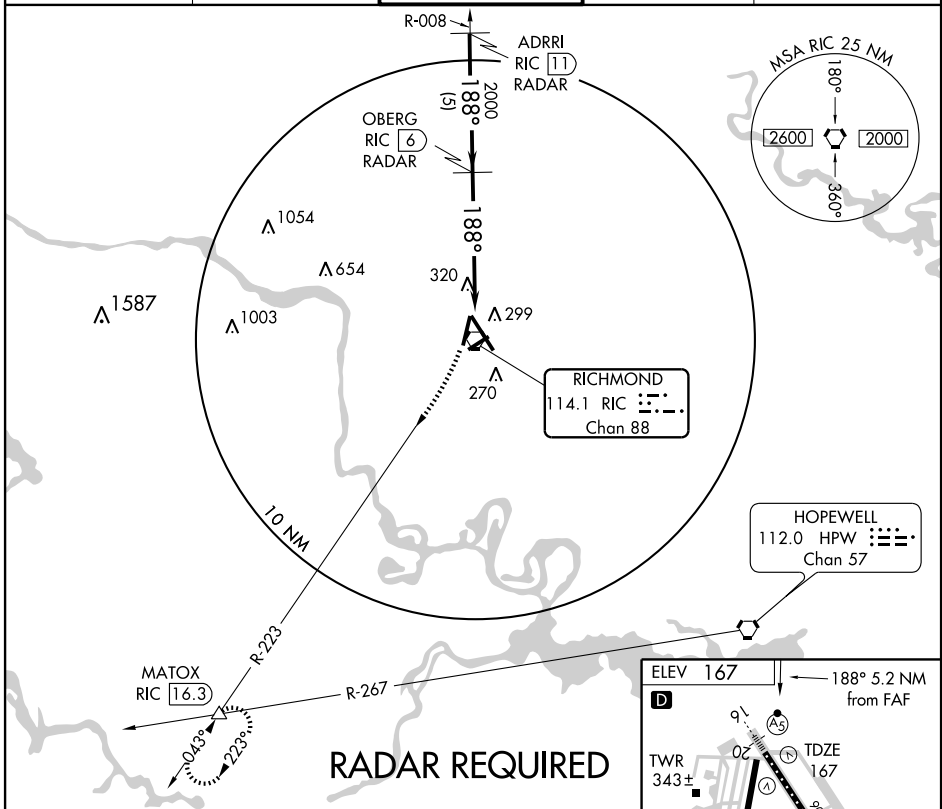
VORTAC RIC <b>114.1</b> Chan <b>88</b>	APP CRS <b>188°</b>	Rwy Idg <b>6607</b> TDZE <b>167</b> Apt Elev <b>167</b>
--	------------------------	---

# VOR RWY 20

RICHMOND INTL (RIC)

<p><b>▼ DME or RADAR REQUIRED</b></p>		<p>MISSED APPROACH: Climbing right turn to 2000 via RIC R-223 to MATOX INT/RIC 16.3 DME and hold.</p>		
---------------------------------------	--	---	--	--

ATIS <b>119.15 263.025</b>	POTOMAC APP CON <b>134.7 307.2</b>	<b>RICHMOND TOWER</b> <b>121.1 257.8</b>	GND CON <b>121.9 348.6</b>	CLNC DEL <b>127.55 348.6</b>
-------------------------------	---------------------------------------	---	-------------------------------	---------------------------------



CATEGORY	A	B	C	D
S-20	640-1 473 (500-1)		640-1¼ 473 (500-1¼)	640-1½ 473 (500-1½)
CIRCLING	660-1 493 (500-1)		660-1½ 493 (500-1½)	720-2 553 (600-2)

FAF to MAP 5.2 NM					
Knots	60	90	120	150	180
Min:Sec	5:12	3:28	2:36	2:05	1:44

RICHMOND, VIRGINIA  
Amdt 1A 09295

37°30'N - 77°19'W

# RICHMOND INTL (RIC)

## VOR RWY 20

NE-3, 11 MAR 2010 to 08 APR 2010

NE-3, 11 MAR 2010 to 08 APR 2010