

RICHMOND, VIRGINIA

AL-347 (FAA)

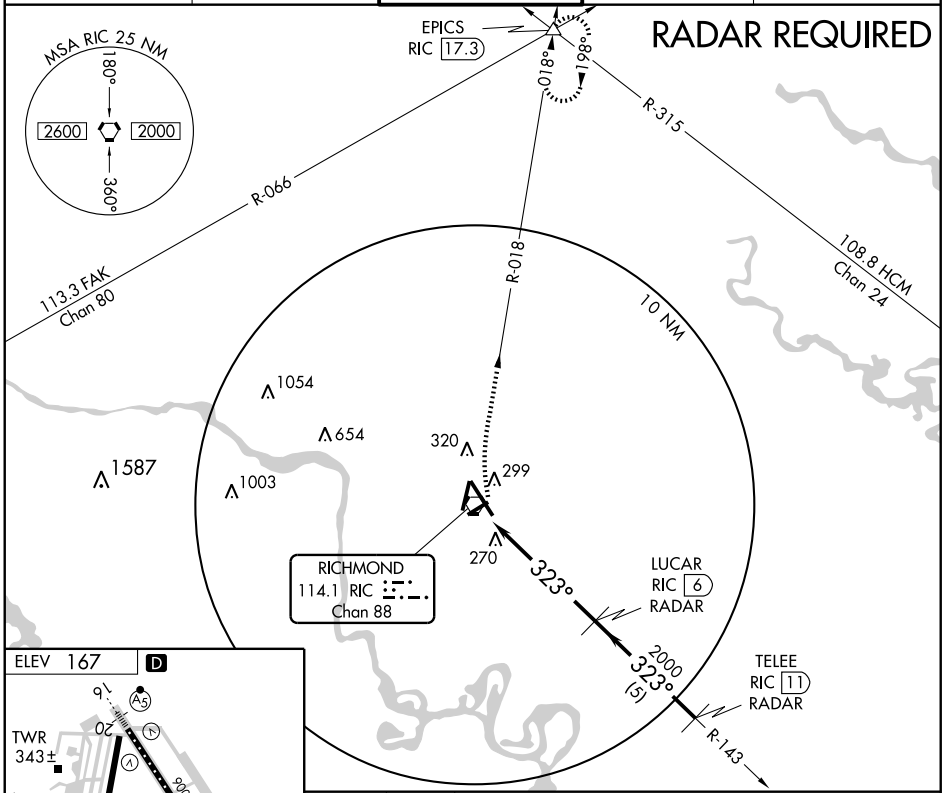
VORTAC RIC 114.1 Chan 88	APP CRS 323°	Rwy Idg TDZE 161 Apt Elev 167	9003
--	------------------------	---	-------------

VOR RWY 34

RICHMOND INTL (RIC)

	For inoperative ALSF, increase S-34 Cat D visibility to RVR 6000. DME or RADAR REQUIRED		MISSED APPROACH: Climbing right turn to 2000 via RIC R-018 to EPICS INT and hold.

ATIS 119.15 263.025	POTOMAC APP CON 134.7 307.2	RICHMOND TOWER 121.1 257.8	GND CON 121.9 348.6	CLNC DEL 127.55 348.6
-------------------------------	---------------------------------------	---	-------------------------------	---------------------------------



NE-3, 19 NOV 2009 to 17 DEC 2009

NE-3, 19 NOV 2009 to 17 DEC 2009

ELEV 167 **D**

TWR 343±

249

227

323° 5.3 NM from FAF

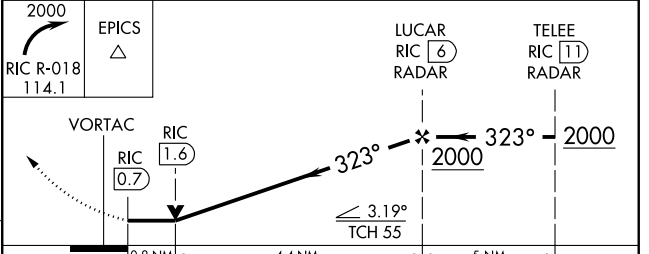
TDZE 161

HIRL Rwy 2-20, 7-25, and 16-34

REIL Rwy 20 and 25

FAF to MAP 5.3 NM

Knots	60	90	120	150	180
Min:Sec	5:18	3:32	2:39	2:07	1:46



CATEGORY	A	B	C	D
S-34	540/24 379 (400-½)			540/50 379 (400-1)
CIRCLING	660-1 493 (500-1)		660-1½ 493 (500-1½) 720-2 553 (600-2)	

RICHMOND, VIRGINIA
Amdt 23A 09295

37°30'N - 77°19'W

RICHMOND INTL (RIC)

VOR RWY 34